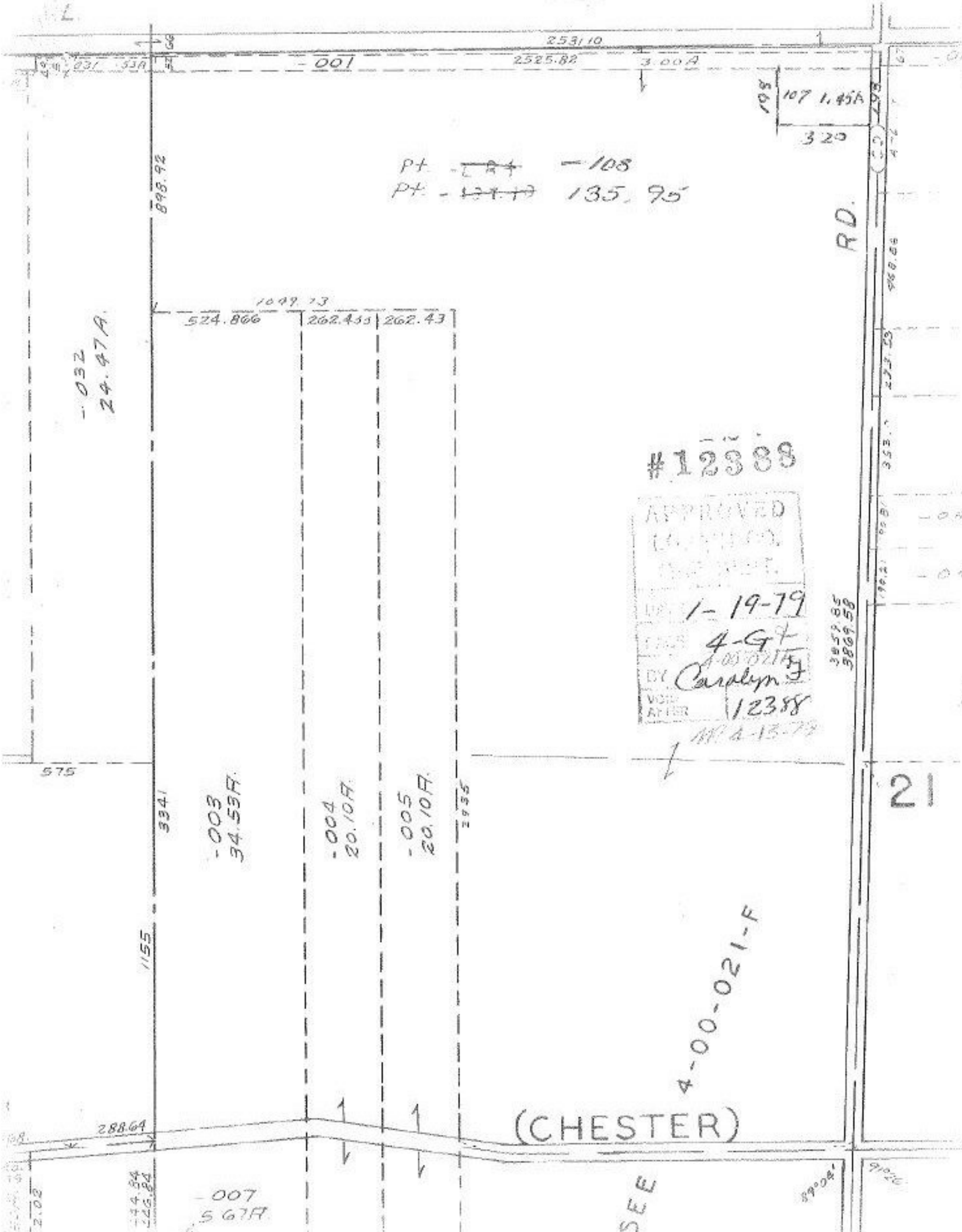


SEE 4-C



~~PT - 124~~ - 108
 PT - ~~134~~ 135.95

#12388
 APPROVED
 1-19-79
 BY Carolyn J
 12388

4-00-021-F

(CHESTER)

SEE

RD.

21

-032
24.47A

-003
34.53A

-004
20.10A

-005
20.10A

-007
5.67A

8900A

9100