

PARSONS

#12368

SEE ALSO
12154
11978

MAR 9 1979
[Signature]

#12368

APPROVED
LORAIN CO.
MAP DEPT.
DATE 1-3-79
PAGE 15-C
BY T. McNeil
VOID AFTER

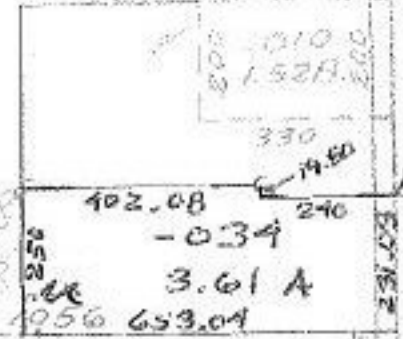
23.06
23.06
1975
23.61
23.00

-003
28.66A

FILE

-035
19.45A.

-039
23.00A M



-011 5.00A.

-012 2.50A.

-013 2.50A.

-014 2.50A.

-015 2.50A.

-016 5.00A.

-017 5.00A.

-018 5.00A.

-019 5.00A.

-020 2.50A.

-021 10.56 2.50A.

-001
101.00A.

RD. 635.60

WHEELER

3347