

#12350

90°00'

340.25 340.25

285.1

400

1860



#12350

APPROVED
LORAIN CO.
MAP DEPT.

DATE 12-20-78

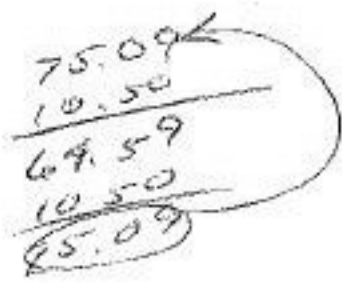
PAGE 16-H

BY T. M. Nair

VOID AFTER

MAR 1 1979

- 007
44.67 A.



72

- 010
64.59 A.

~~- 003~~
75.09 A.

2748.24

- 001
18.50 A.

2747.58

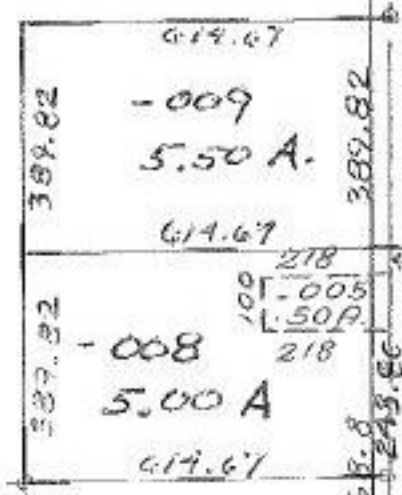
1715.38

1032.2

1265.8

- 004
30.00 A.

1032.2



619.82

285.16

1265.8

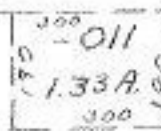
838.40

- 006
5.78 A.

1591

837.44

- 010
2.31 A.



- 001
88.30 A. - D.
86.51 A. - Dup.

834.83
- 008
5.58 A.

835.9

750.56
190

290.60

1892.20

