

#12347

0.63  
10/6/5  
0.14  
A  
2

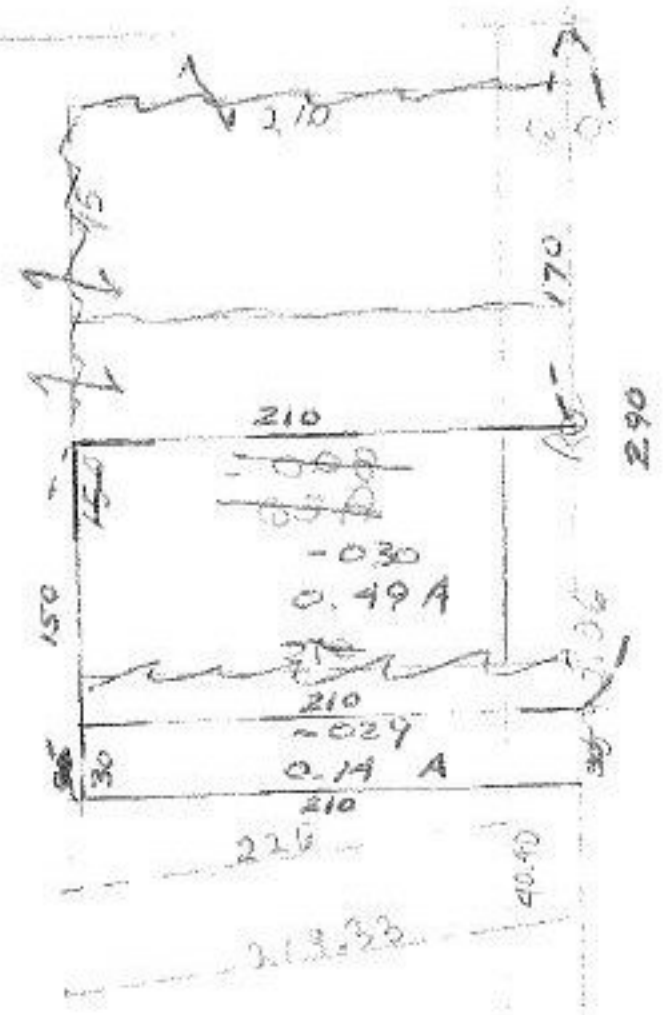
0.63  
0.14  

---

0.49  
T.M.  
3-14-79

#12347

APPROVED  
SHERMAN CO.  
MAP DEPT.  
12-27-78  
9-00-093-3  
T. McNair



THIS IS ALSO A MAP CORRECTION  
TO RELOCATE -008 PER

DEED 606/124. T. McNAIR 12-27-78

255.53  
C