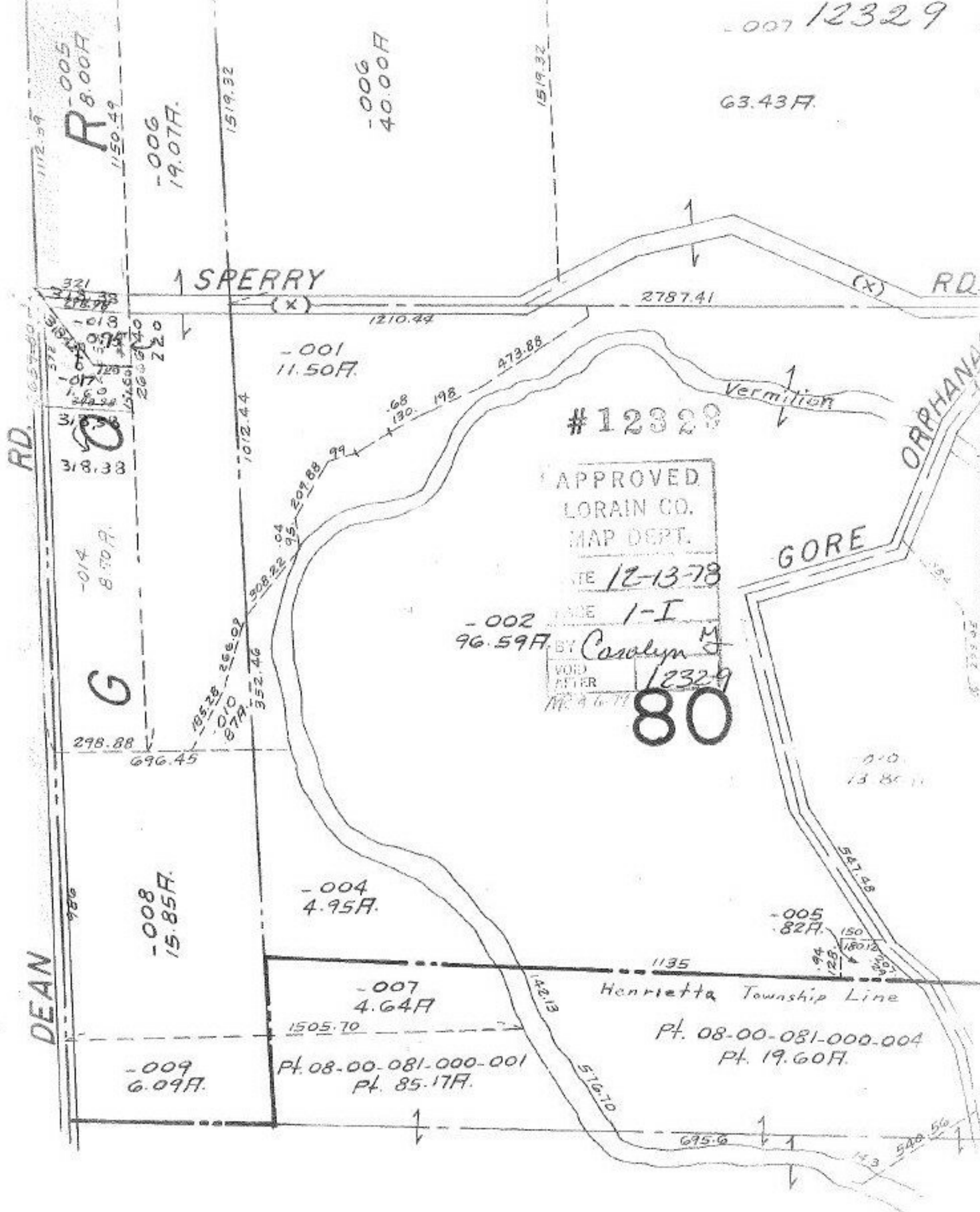


007 12329



R-005
8.00F

-006
19.07F.

-006
40.00F

63.43F.

↑ SPERRY

2787.41

(X) RD.

-001
11.50F.

#12329

Vermilion

ORPHANAN

APPROVED
LORAIN CO.
MAP DEPT.

DATE 12-13-78

-002
96.59F. BY Carolyn M.

VOID AFTER
12329
80

GORE

RD.

-014
8.70F.

G

298.88

696.45

-008
15.85F.

-004
4.95F.

-007
4.64F

-005
82F.

1135
Henrietta Township Line

Pt. 08-00-081-000-004
Pt. 19.60F.

DEAN

-009
6.09F.

Pt. 08-00-081-000-001
Pt. 85.17F.

↑

695.6

14.3

560