

#92813

#12813

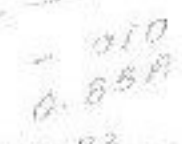
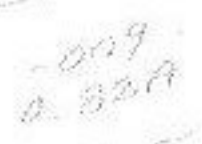
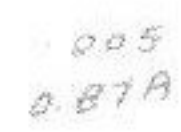
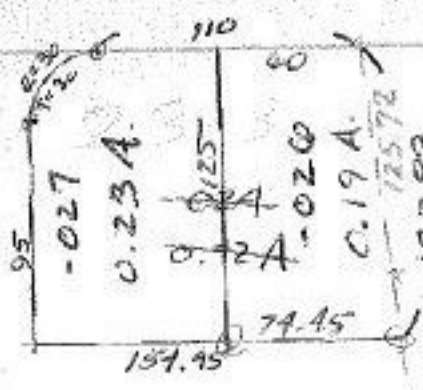
APPROVED	
LORAIN CO.	
MAP DEPT.	
DATE	12-7-78
PAGE	6-28
BY	T. McNair
VOID AFTER	

T.M.

MAY 7 1979

13

105



Pt - 015

Pt 7.55A

-014  
9.11A

12296

21.86



85° 58'

201.77