

#12235
 #12236
 #12237
 #12238

APPROVED
 LORAIN CO.
 MAP DEPT.

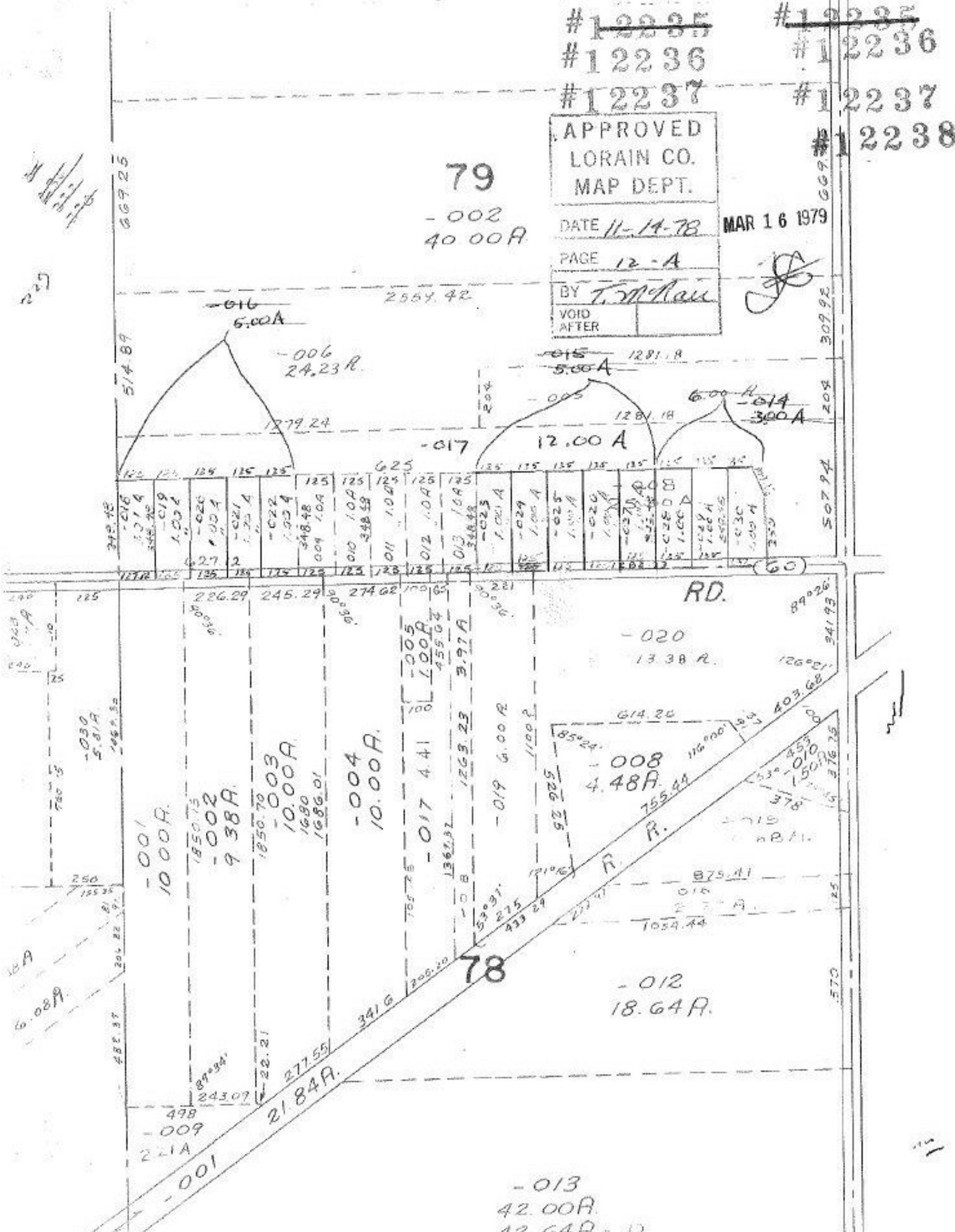
DATE 11-14-78 MAR 16 1979

PAGE 12-A

BY T. McRau
 VOID AFTER

79

-002
 40.00A



Handwritten notes:
 227
 227

Handwritten notes:
 6.08A

-013
 42.00A
 42.64A - D.

11