

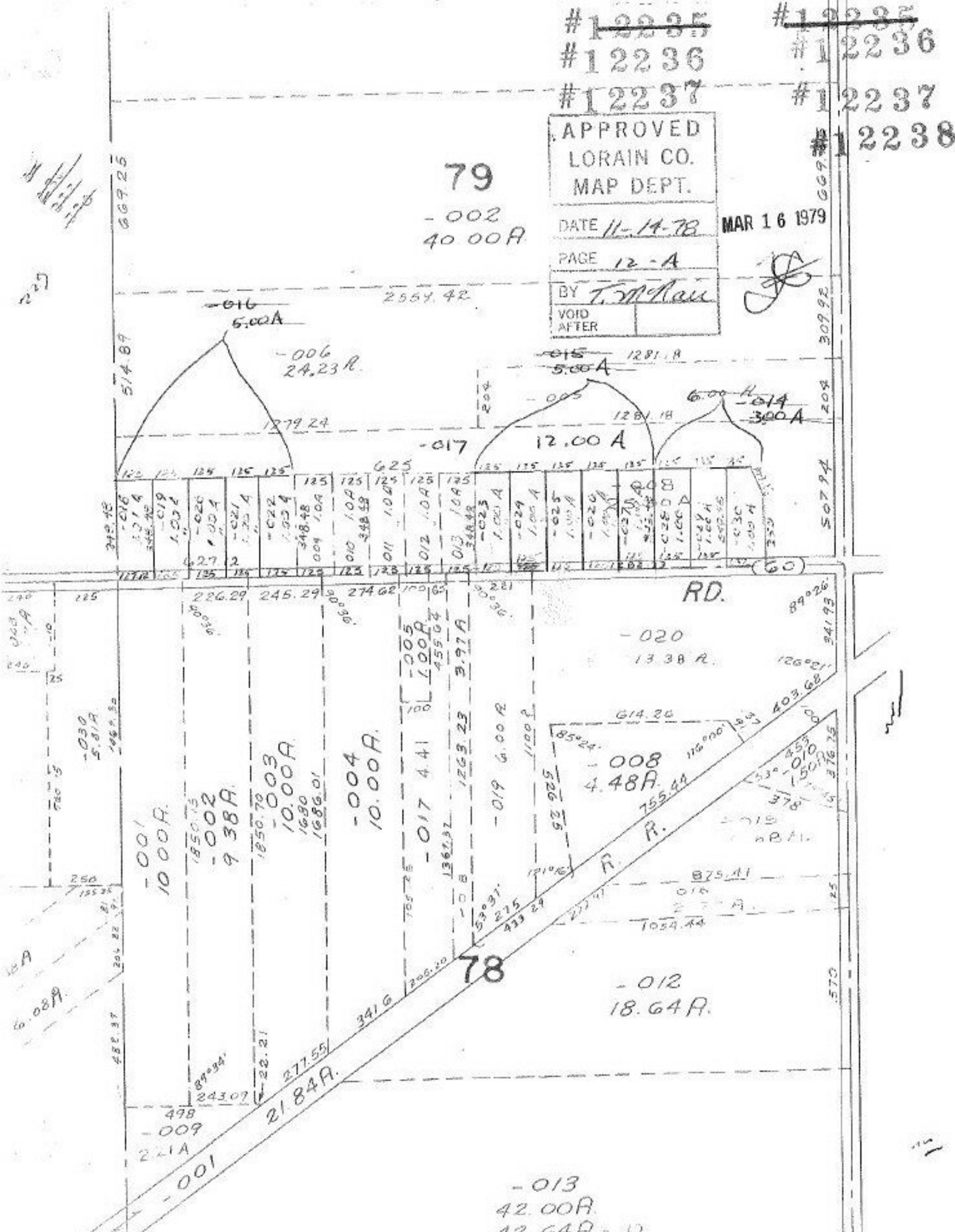
#12235
 #12236
 #12237
 #12238

APPROVED
 LORAIN CO.
 MAP DEPT.
 DATE 11-14-78
 PAGE 12-A
 BY T. McLean
 VOID AFTER

MAR 16 1979

79

-002
 40.00A



78

-012
 18.64A

-013
 42.00A
 42.64A - D.

Handwritten notes and scribbles in the top left corner.

227

6.08A

11