

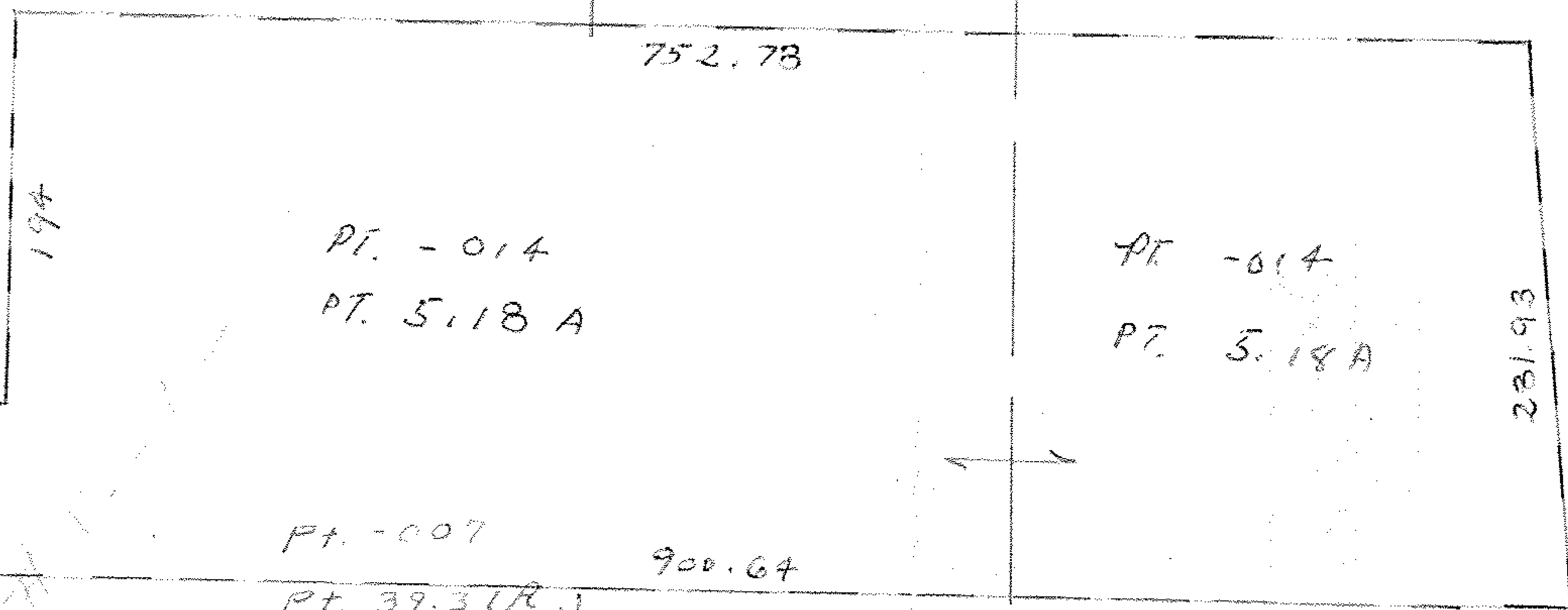
12227

438.77

86.59

233.17

WEST RIDGES CITY 150



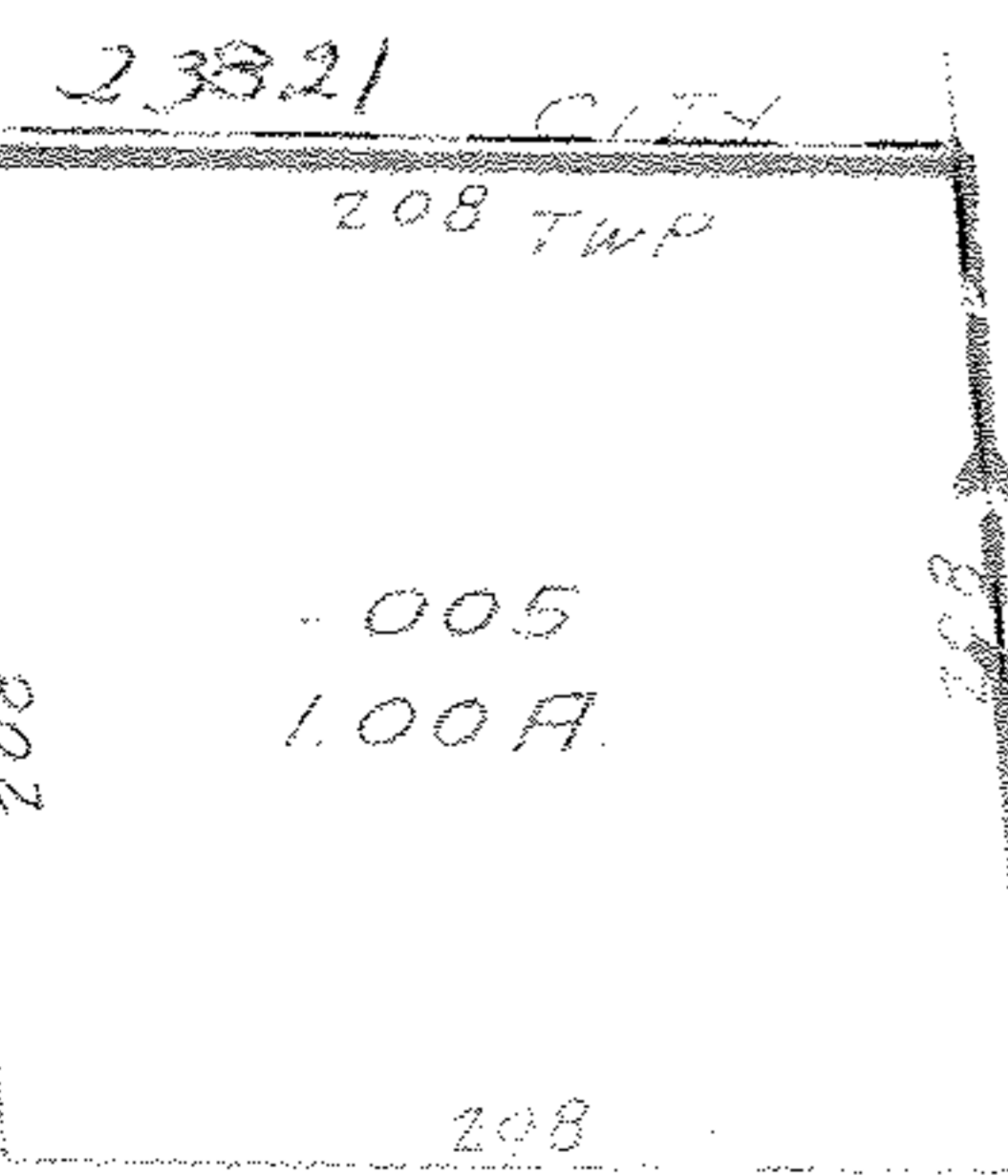
PT. -015 PT. -016
PT. 39.19 PT. 39.19

PT. -015
PT. 34.19 A

PT. -014
PT. ~~34.19 A~~
~~31.19~~
31.96 A

PT. -017
PT. ~~34.19 A~~
31.96 A.

-016
2.23A



#12227

MAY 7 1979

PLANNED
CO.
MAP DEPT.
DATE 1-19-79
PAGE 6-28
BY Carolyn J.
VOID AFTER 12227

TWP

208

-005
1.00A

233.17

303.17

208

159.79

RD

RD