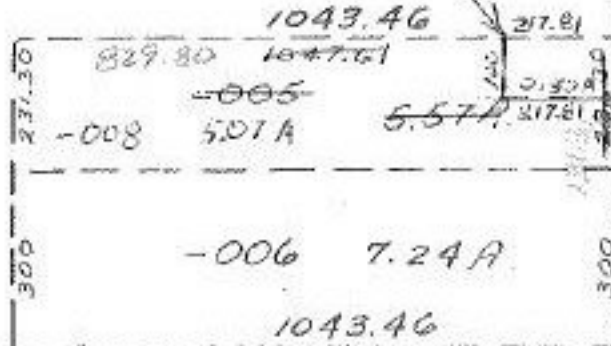


#12174

APPROVED	
LORAIN CO. MAP DEPT.	
DATE	10-25-78
PAGE	15-A
BY	T. McNamee
VOID AFTER	

MAR 9 1979
[Signature]



1360
 820.76
 280
 237.30
 300

240	240	240	240
105	105	105	105
16Rds.	16Rds.	16Rds.	16Rds.
-010	-010	-010	-010
1.87A	1.87A	1.87A	1.87A
364	364	364	364
-007	-007	-007	-007
2.34A	2.34A	2.34A	2.34A
280	280	280	280
-009	-009	-009	-009
1.31A	1.31A	1.31A	1.31A
157	157	157	157
-003	-003	-003	-003
1.88A	1.88A	1.88A	1.88A
225	225	225	225
364	364	364	364
-011	-011	-011	-011
1.67A	1.67A	1.67A	1.67A
200	200	200	200
364	364	364	364

231.50
 1047.64
 217.81
 829.80

21

-003
 44.00 A. Dup.
 42.44 A. D.

-004
 40.00 A.

-001
 69.00 A.

264	264
264	264
264	264
(60)	(60)
250	250
175	175
100A	100A
280	280

BIGGS

200-
 175