

T.M. 3-21-79

#12121

APPROVED	
LORAIN CO.	
MAP DEPT.	
DATE	10-10-78
PAGE	2-00-102-1
BY	F.M. Air
VOID AFTER	12121

SHEFFIELD LAND & IMF CO.'S SUB. NO. 2

#12121

100 ST.

36th

SEE 3-00-097-B

VACATION ORDINANCE NO. 29-79 SEE MAP 35/41

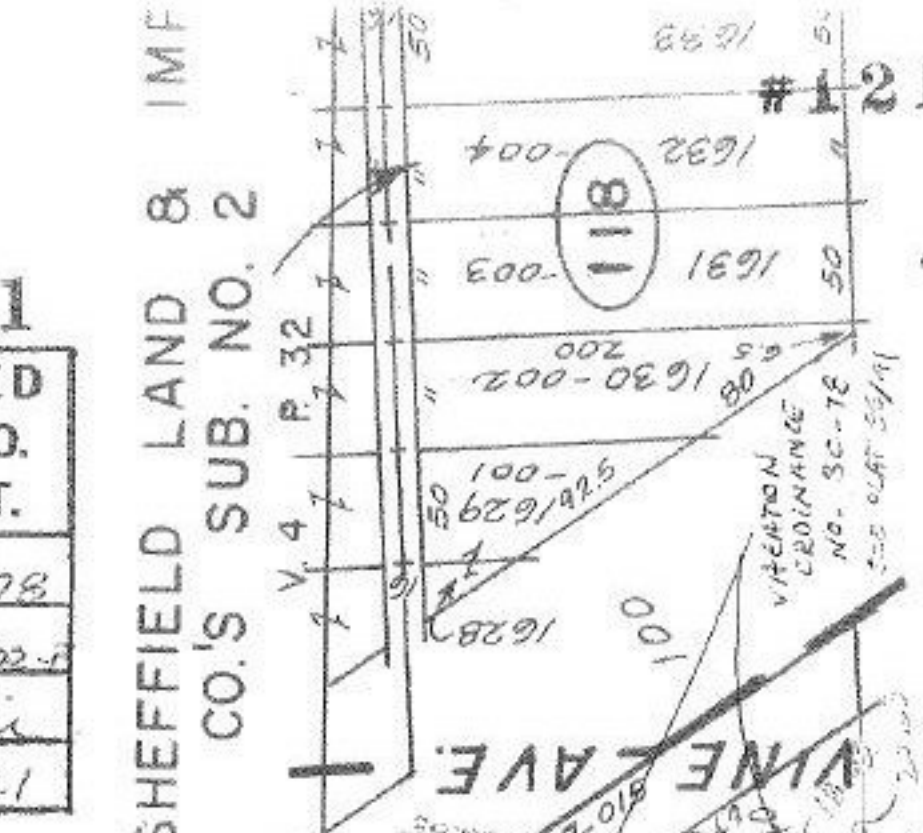
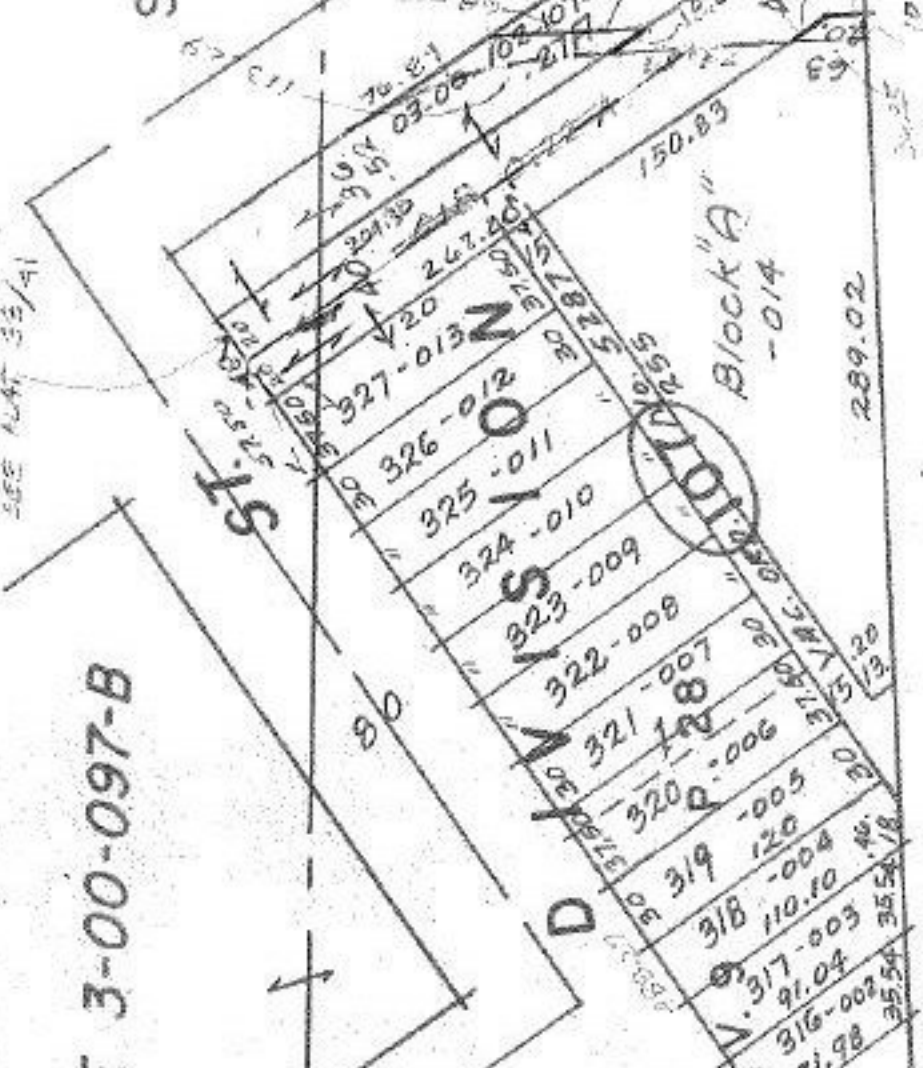
FULTON

VICTORY AVE.

VINE AVE.

PLANT

Block "A" -014



INDUSTRIAL

Handwritten signature or scribble at the bottom right.