

#12108

102

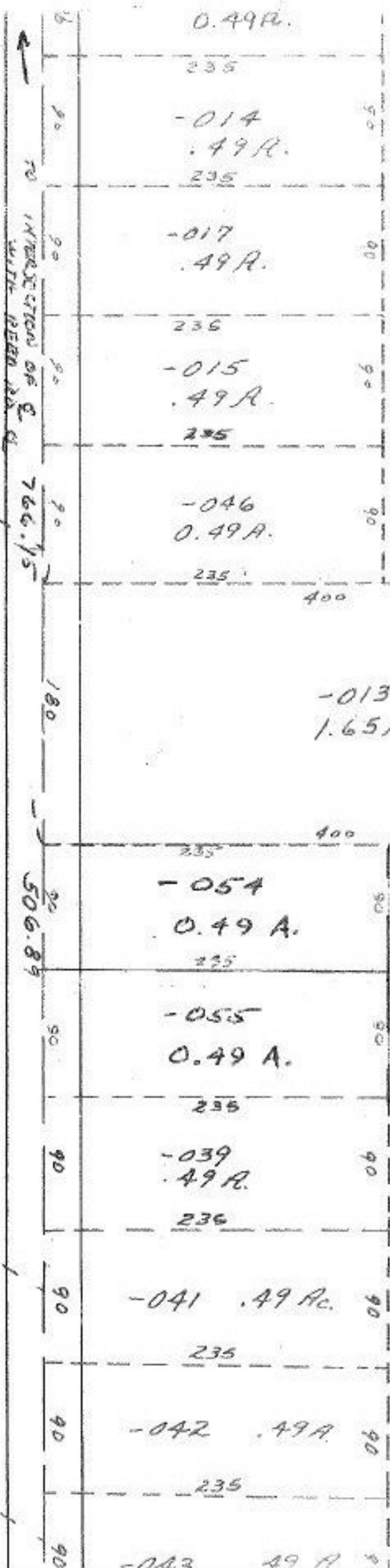
~~Pt. 051~~  
~~Pt. 75.34A~~

Pt. -050  
Pt. 74.36 A

CHANGE  
Pg.  
7-H

#12108

APPROVED
LORAIN CO.
MAP DEPT.
DATE 10-3-78
PAGE 7-00-012-A
BY T. McNeil
VOID AFTER



120  
519.87

-001  
0.75 A.

304.03

N. A.

581.69

-004  
1.00 A.

SF