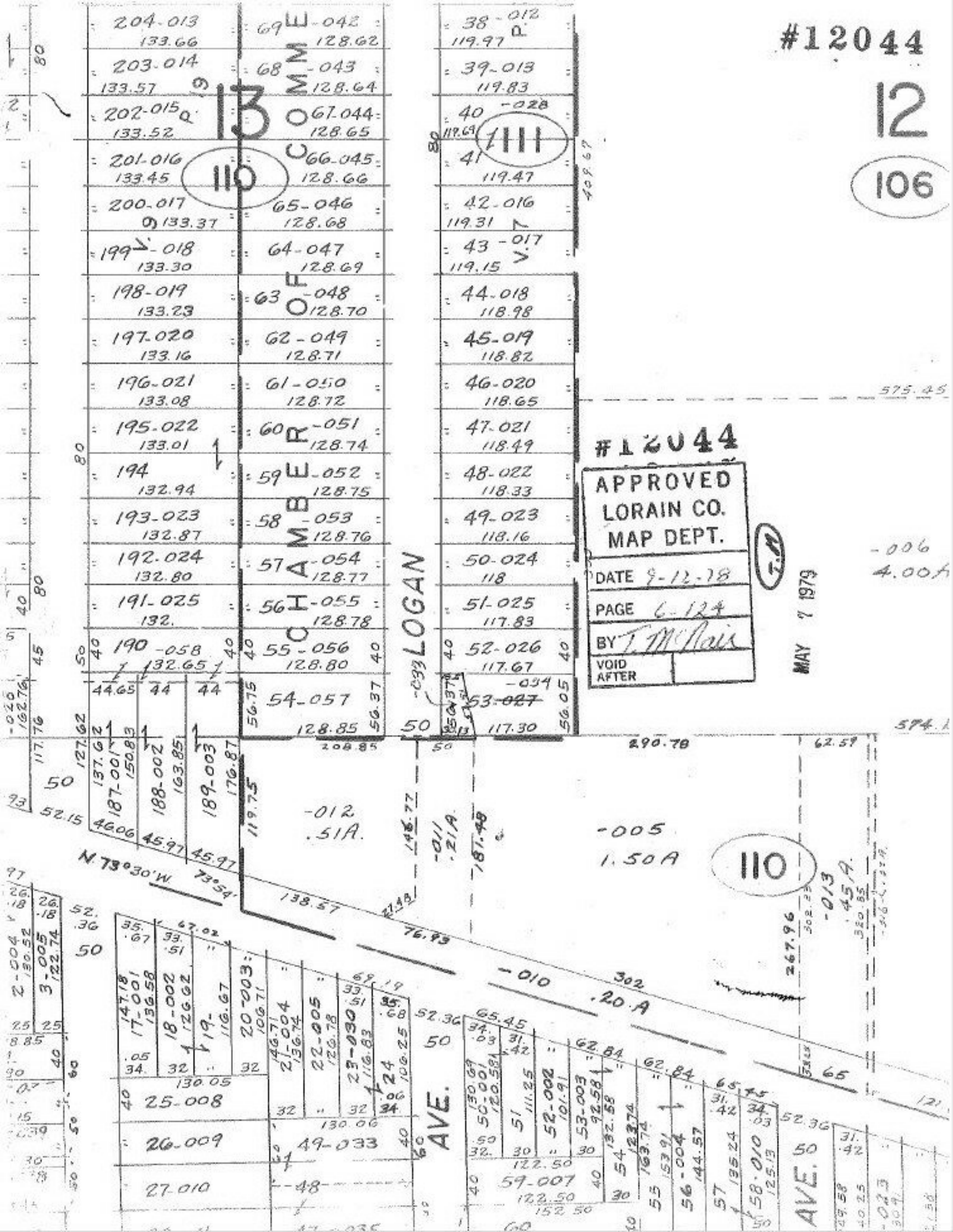


#12044

12

106



110

#12044

APPROVED
 LORAIN CO.
 MAP DEPT.

DATE 9-12-78

PAGE 6-124

BY T. McNeil

VOID AFTER

MAY 7 1979

110

LOGAN

AVE.

AVE.

-006
4.00A

574.1

575.45

-005
1.50A

-013
1.45A

-010
20A

204-013 133.66
 203-014 133.57
 202-015 133.52
 201-016 133.45
 200-017 133.37
 199-018 133.30
 198-019 133.23
 197-020 133.16
 196-021 133.08
 195-022 133.01
 194 132.94
 193-023 132.87
 192-024 132.80
 191-025 132.
 190-058 132.65
 54-057 128.85

38-012 119.97
 39-013 119.83
 40-028 117.69
 41 119.47
 42-016 119.31
 43-017 119.15
 44-018 118.98
 45-019 118.82
 46-020 118.65
 47-021 118.49
 48-022 118.33
 49-023 118.16
 50-024 118.
 51-025 117.83
 52-026 117.67
 53-027 117.30

2-004 26.18
 3-005 18.74
 17-001 35.67
 18-002 33.51
 19-003 32.19
 20-003 32.10671
 21-004 32.13674
 22-005 32.12678
 23-030 32.11683
 24 32.10625
 25-008 32.13005
 26-009 32.13006
 27-010 32.13006

54-057 56.37
 55-056 128.80
 56-055 128.78
 57-054 128.77
 58-053 128.76
 59-052 128.75
 60-051 128.74
 61-050 128.72
 62-049 128.71
 63-048 128.70
 64-047 128.69
 65-046 128.68
 66-045 128.66
 67-044 128.65
 68-043 128.64
 69-042 128.62