

#12007

#12007

APPROVED
LORAIN CO.
MAP DEPT

DATE 9-1-78

PAGE 1-L

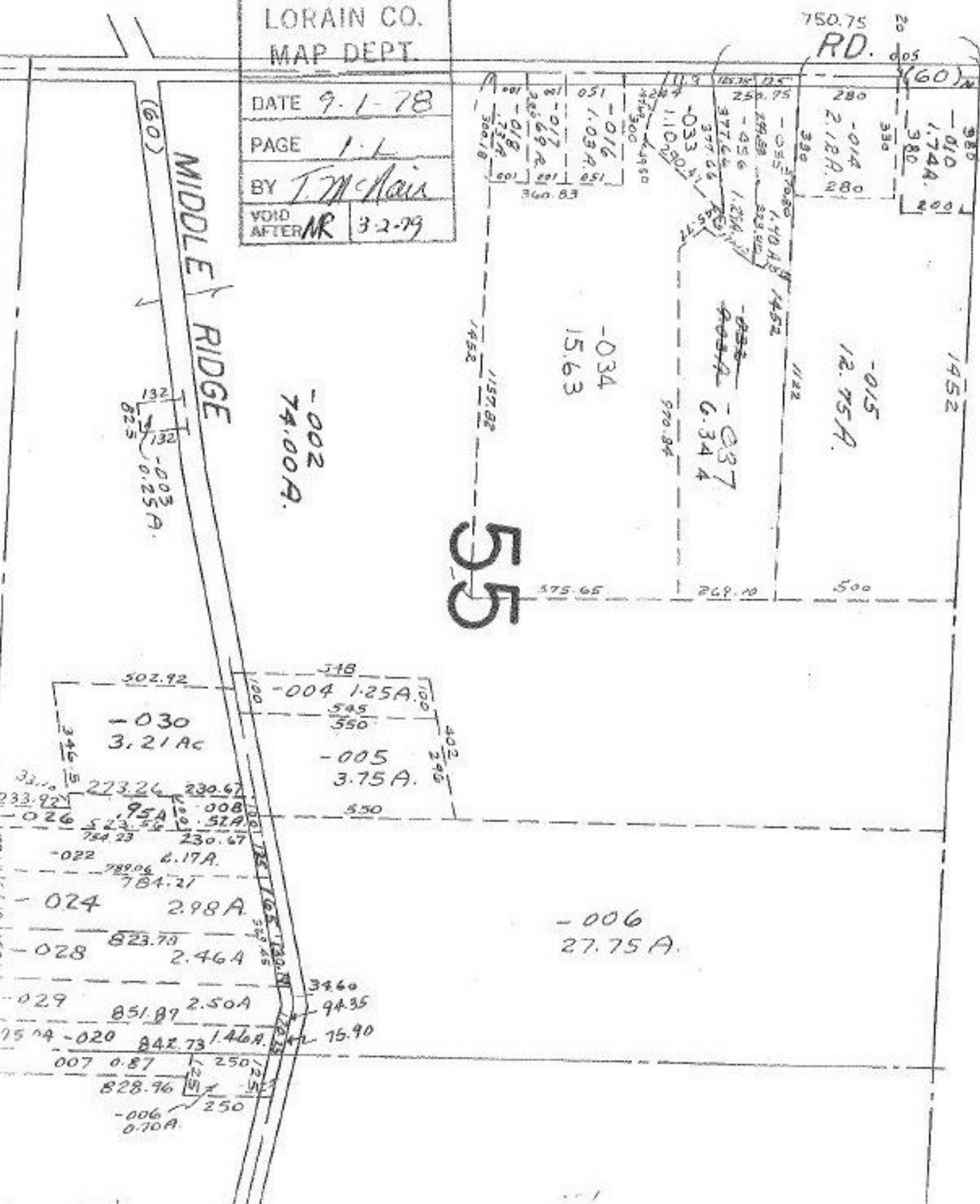
BY T. McNeil

VOID AFTER NR 3-2-79

750.75
RD.

MIDDLE RIDGE

55



-002
74.00A.

-003
0.25A.

-034
15.63

-037
6.34A

-015
12.75A.

1452

-004 1.25A.

-005
3.75A.

-006
27.75A.

-030
3.21Ac

-026
5.23A.

-022
6.17A.

-024
2.98A.

-028
2.46A.

-029
2.50A.

-020
1.46A.

007 0.87

-006
0.70A.