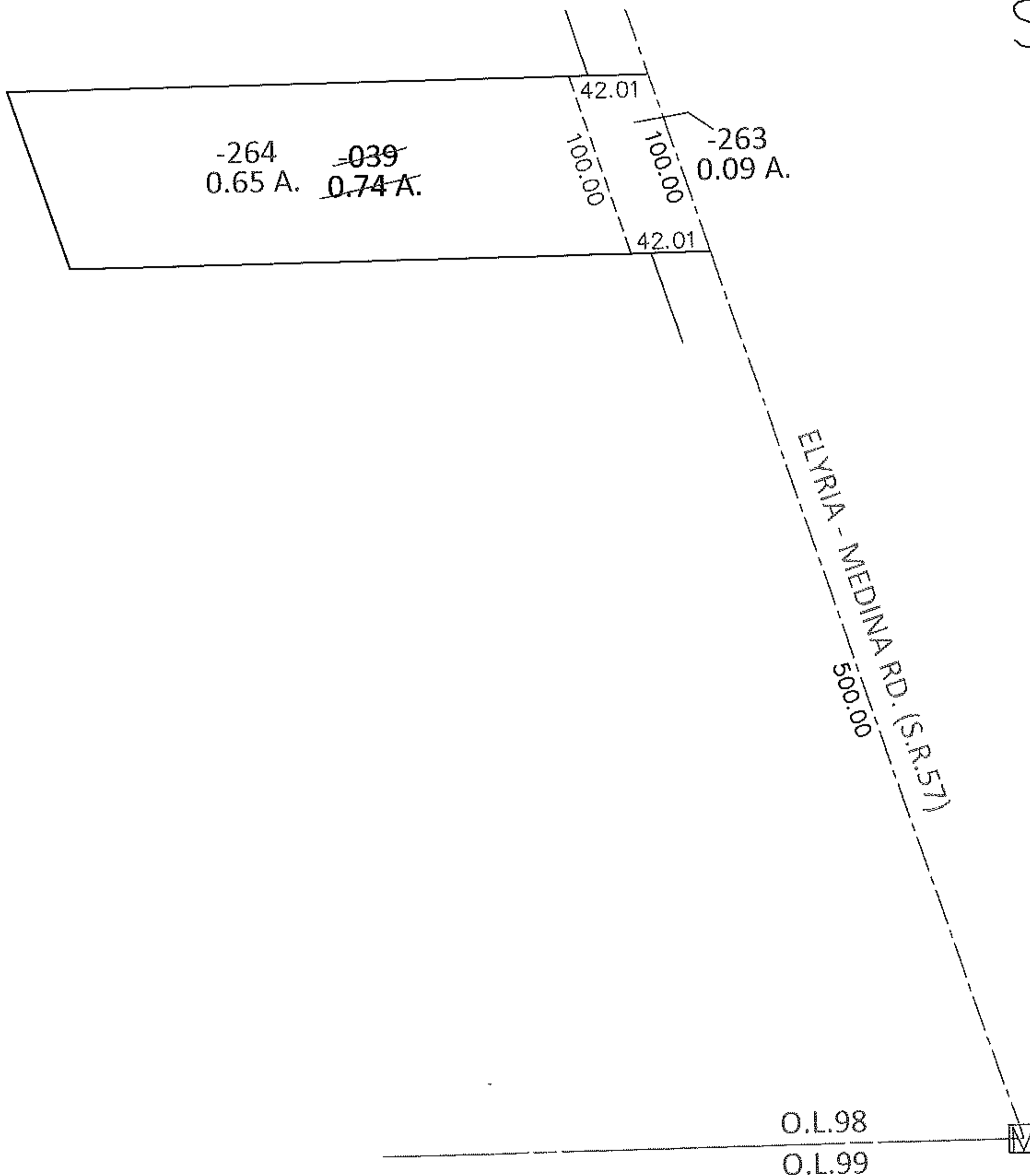
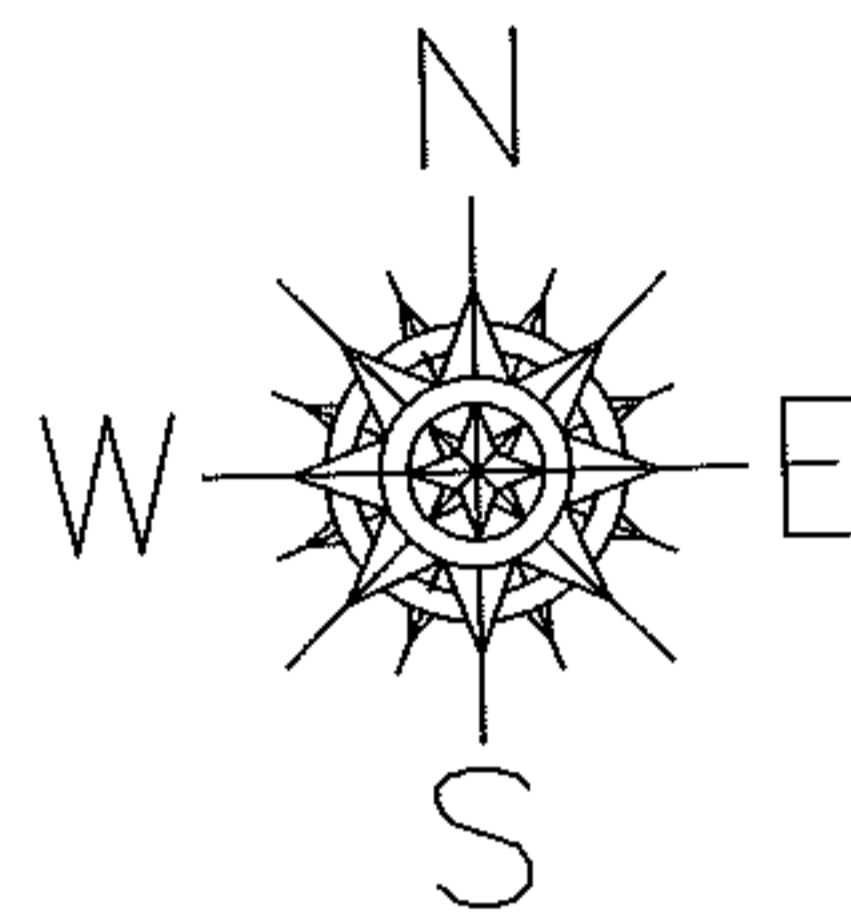


PARENT PARCEL: 11-00-098-000-039

CHILD PARCEL: 11-00-098-000-263, -264

STARTING POINT: AT A MON BOX AT THE INTERSECTION OF C/L OF S.R.57 AND SOUTH LINE OF O.L.98

12-00354



SPLITS/DEEDS PROCESSED

LORAIN COUNTY TAX MAP DEPARTMENT
226 MIDDLE AVE. ELYRIA, OHIO

SURVEYED BY: KENNETH C. DEAN JR.

CLOSURE: .00:10,000

MAP PAGE(S): 11-00-098-A

APPROVED BY: RRM DATE: 12-4-12

SCALE: 1"= 100 PRIOR INST.: 20040014082