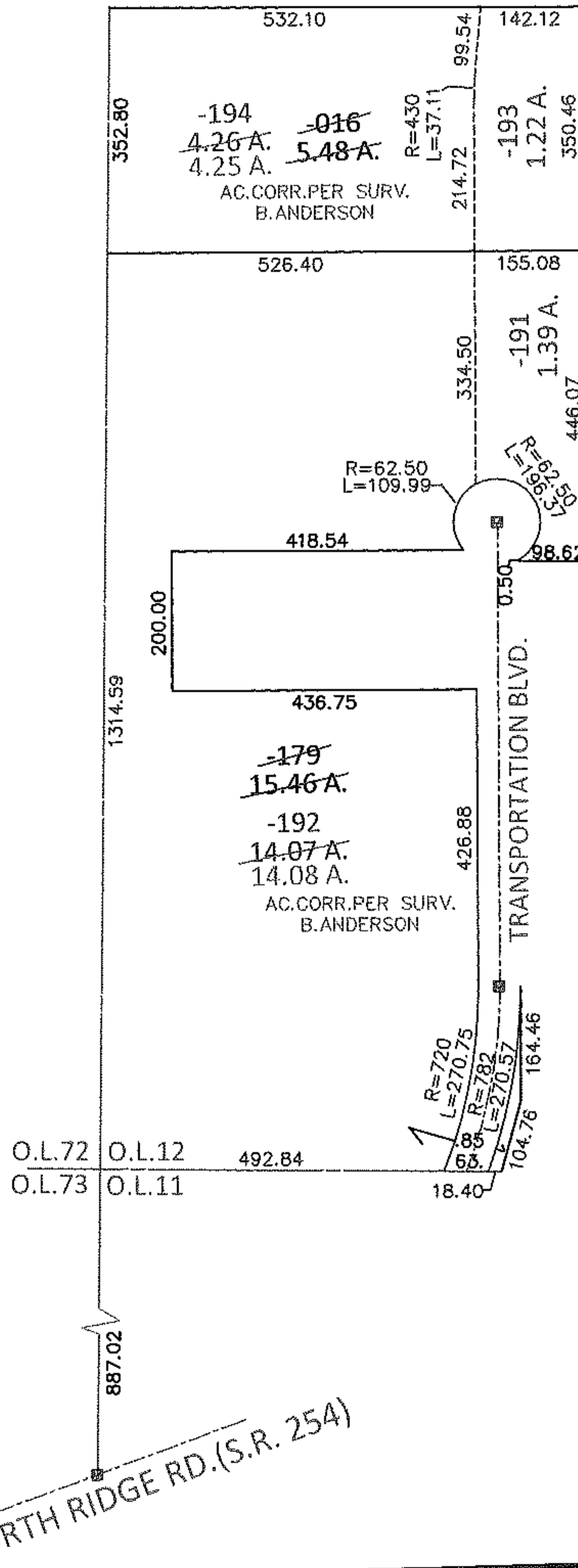
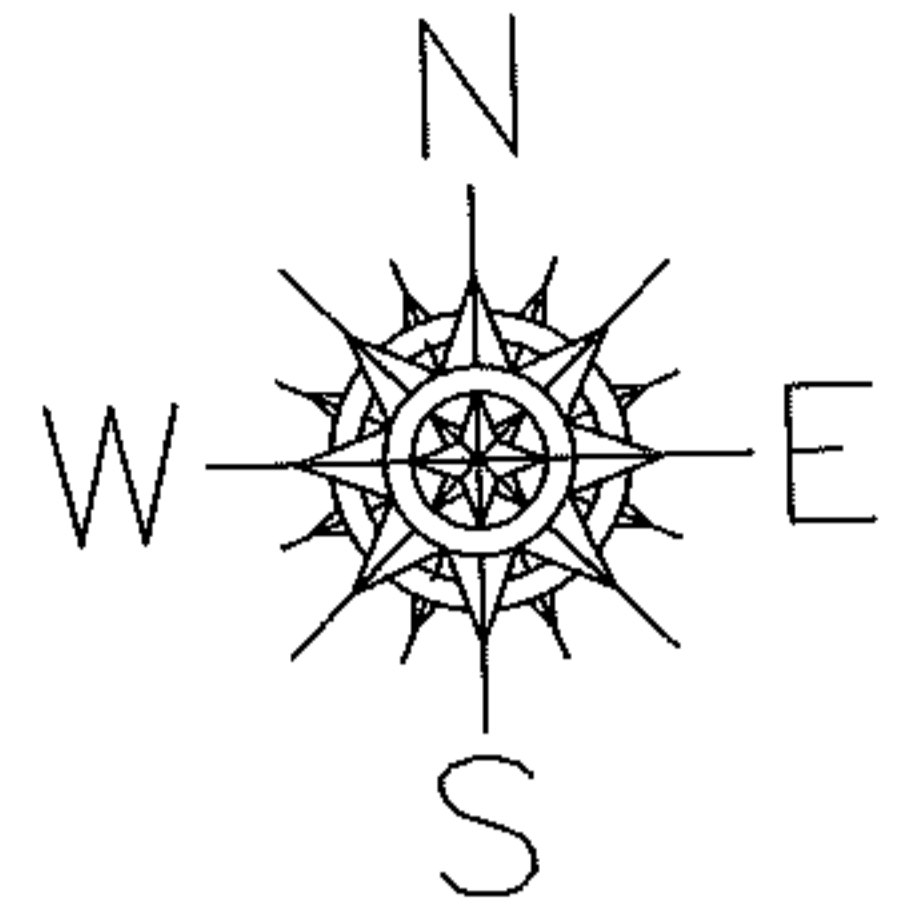


PARENT PARCEL: 03-00-012-000-016, -179

CHILD PARCEL: 03-00-012-000-191 THRU -194

12-00353

STARTING POINT: AT A MON BOX AT THE INTERSECTION OF C/L OF S.R.254 AND WEST LINE OF O.L.11



*20030973737
*19990604261

SPLITS/DEEDS PROCESSED

LORAIN COUNTY TAX MAP DEPARTMENT
226 MIDDLE AVE. ELYRIA, OHIO

SURVEYED BY: BRENT D. ANDERSON

CLOSURE: .01:10,000

MAP PAGE(S): 3-L

APPROVED BY: RRM DATE: 11-30-12

SCALE: 1"= 300 PRIOR INST.: *SEE ABOVE