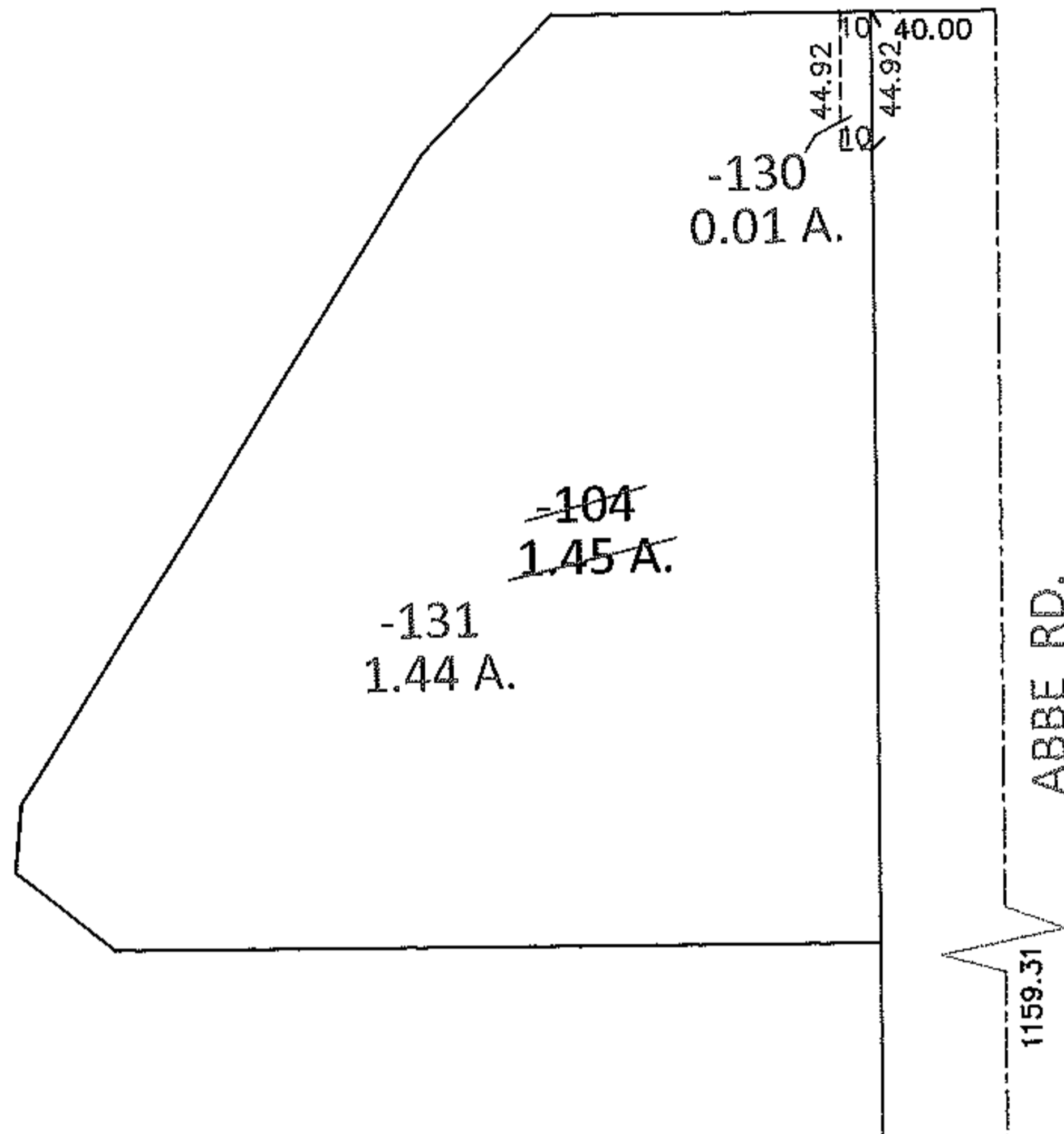
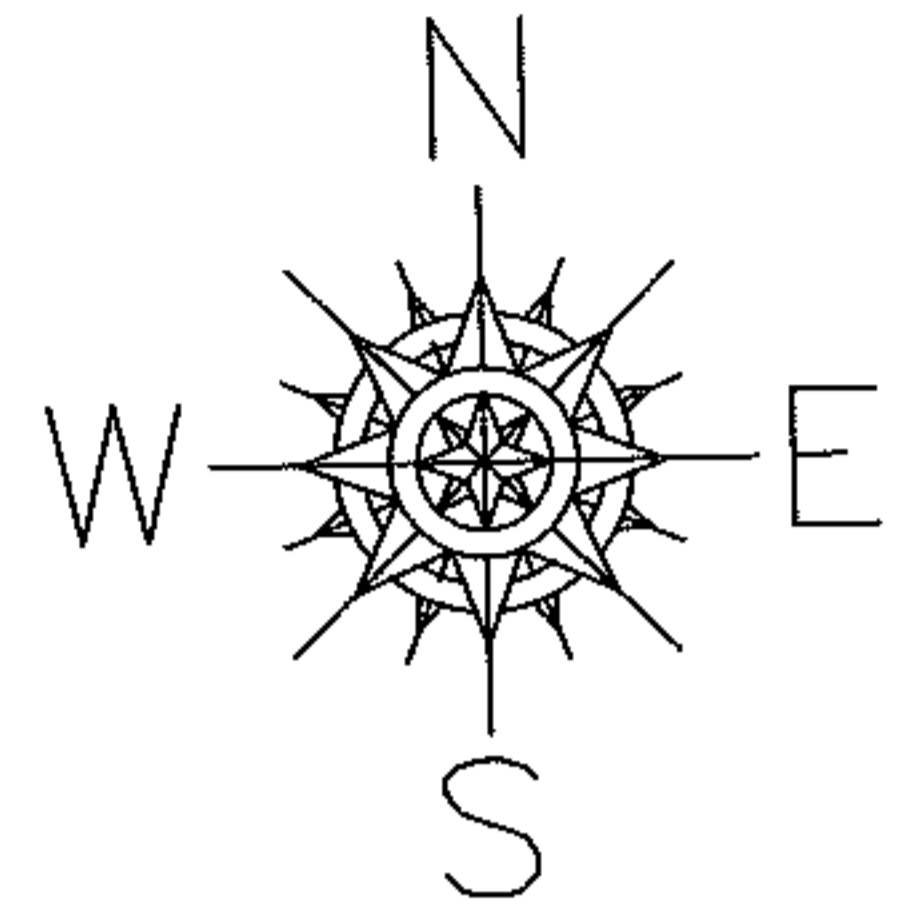


PARENT PARCEL: 03-00-011-102-104

CHILD PARCEL: 03-00-011-102-130, -131

STARTING POINT: AT A MON BOX AT THE INTERSECTION OF C/L OF ABBE RD. AND SOUTH LINE OF O.L.1

12-00345



SHEFFIELD TWP. O.L.11  
ELYRIA TWP. TR.22 O.L.7

SHEFFIELD TWP. O.L.1  
ELYRIA TWP. TR.22 O.L.3

**SPLITS/DEEDS PROCESSED**

LORAIN COUNTY TAX MAP DEPARTMENT  
226 MIDDLE AVE. ELYRIA, OHIO

SURVEYED BY: RICHARD JOHN SWAN

CLOSURE: .00:10,000

MAP PAGE(S): 3-00-011-B

APPROVED BY: RRM DATE: 11-7-12

SCALE: 1"= 100 PRIOR INST.: 20020848295