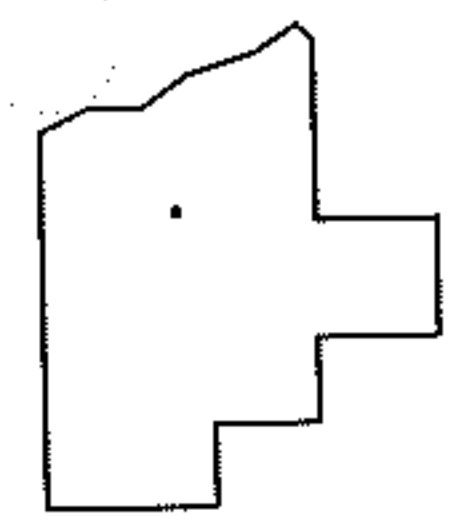
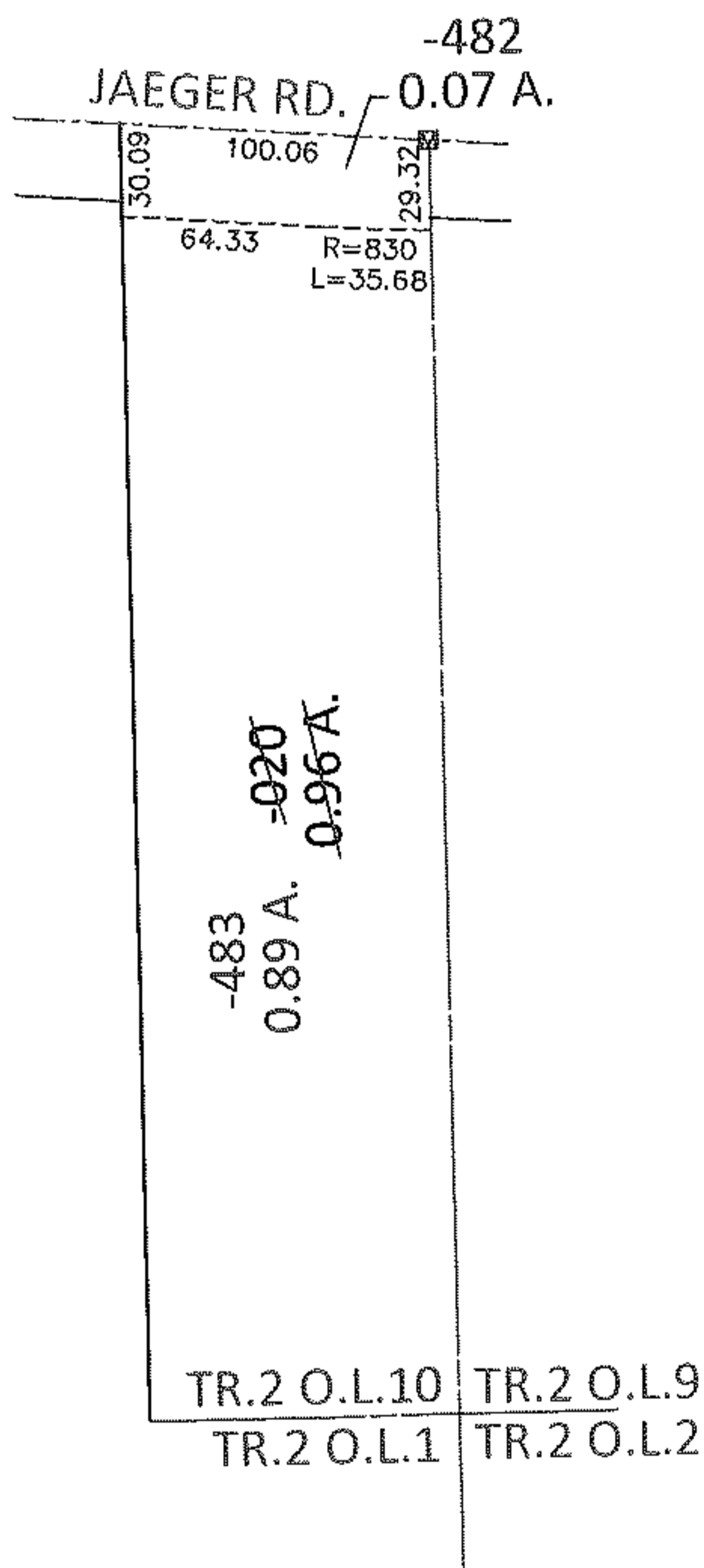
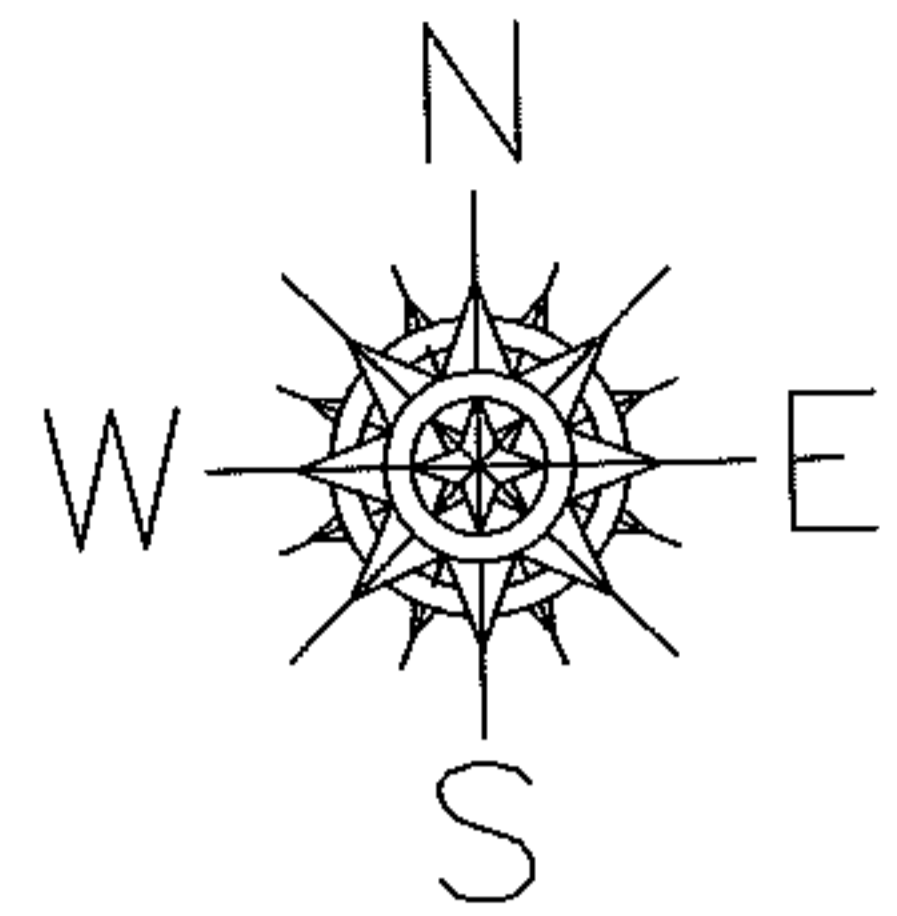


PARENT PARCEL: 02-02-010-000-020

CHILD PARCEL: 02-02-010-000-482, -483

STARTING POINT: AT A MON BOX AT THE INTERSECTION OF C/L OF JAEGER RD. AND EAST LINE TR.2 O.L.10

12-00336



SPLITS/DEEDS PROCESSED

LORAIN COUNTY TAX MAP DEPARTMENT
226 MIDDLE AVE. ELYRIA, OHIO

SURVEYED BY: TREVOR A. BIXLER

CLOSURE: .01:10,000

MAP PAGE(S): 2-02-010-B

APPROVED BY: RRM DATE: 11-5-12

SCALE: 1"=100 PRIOR INST.: OR 17/96