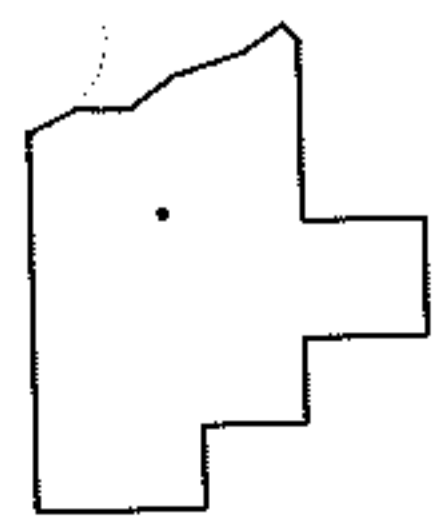
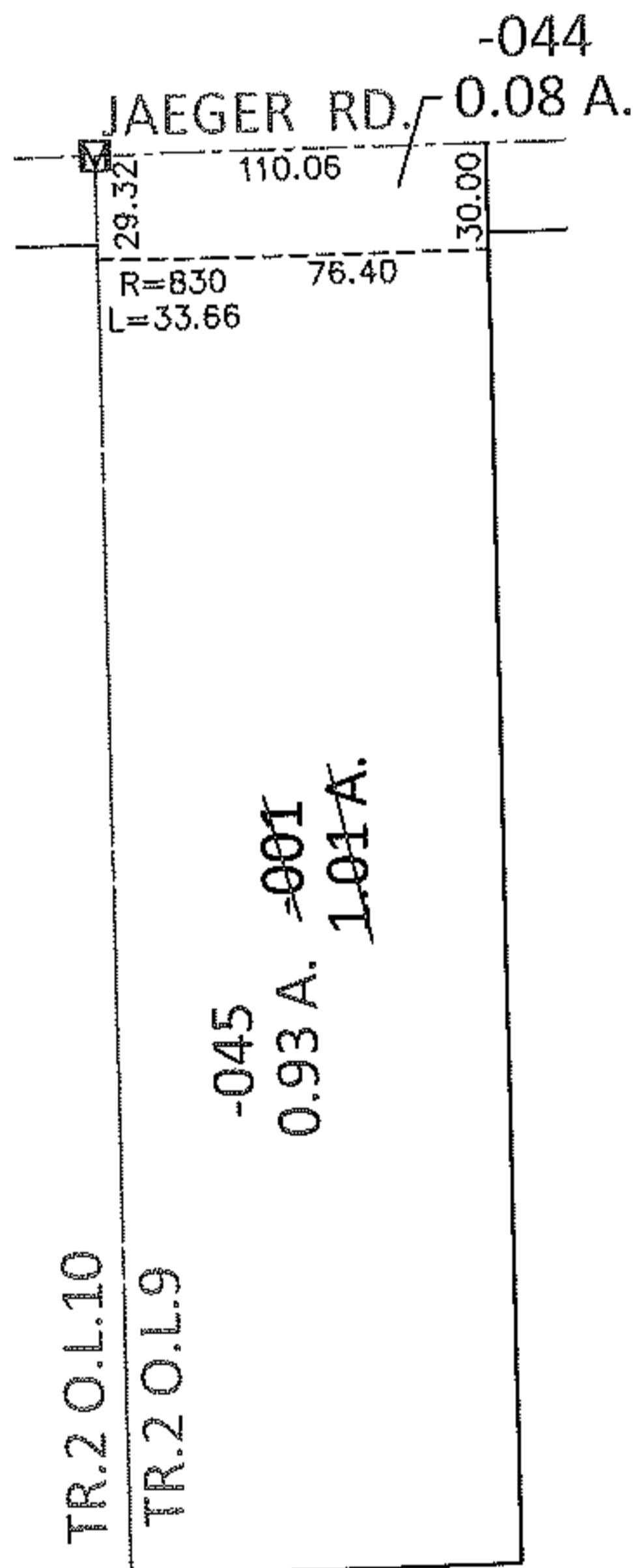
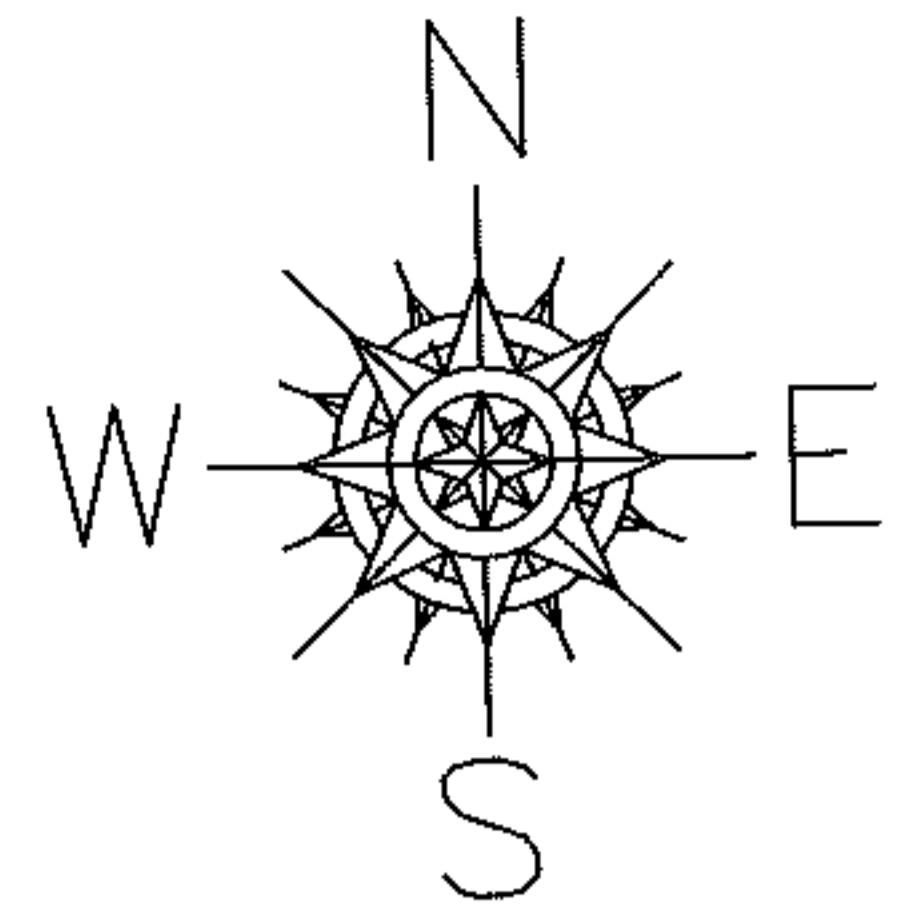


PARENT PARCEL: 02-02-009-102-001

CHILD PARCEL: 02-02-009-102-044, -045

STARTING POINT: AT A MON BOX AT THE INTERSECTION OF C/L OF JAEGER RD. AND WEST LINE TR.2 O.L.9

12-00333



**SPLITS/DEEDS PROCESSED**

LORAIN COUNTY TAX MAP DEPARTMENT  
226 MIDDLE AVE. ELYRIA, OHIO

SURVEYED BY: TREVOR A. BIXLER

CLOSURE: .00:10,000

MAP PAGE(S): 2-02-009-A

APPROVED BY: RRM DATE: 11-2-12

SCALE: 1"= 100 PRIOR INST.: 20070208959