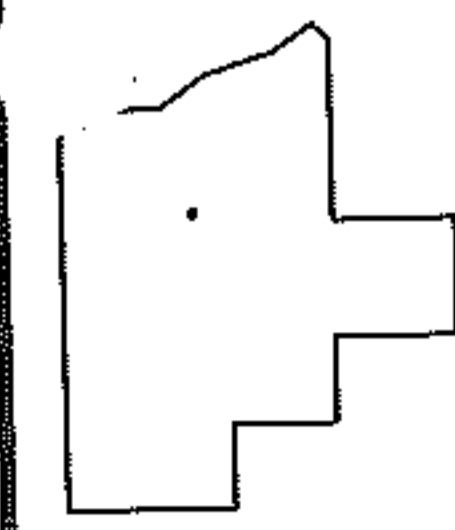
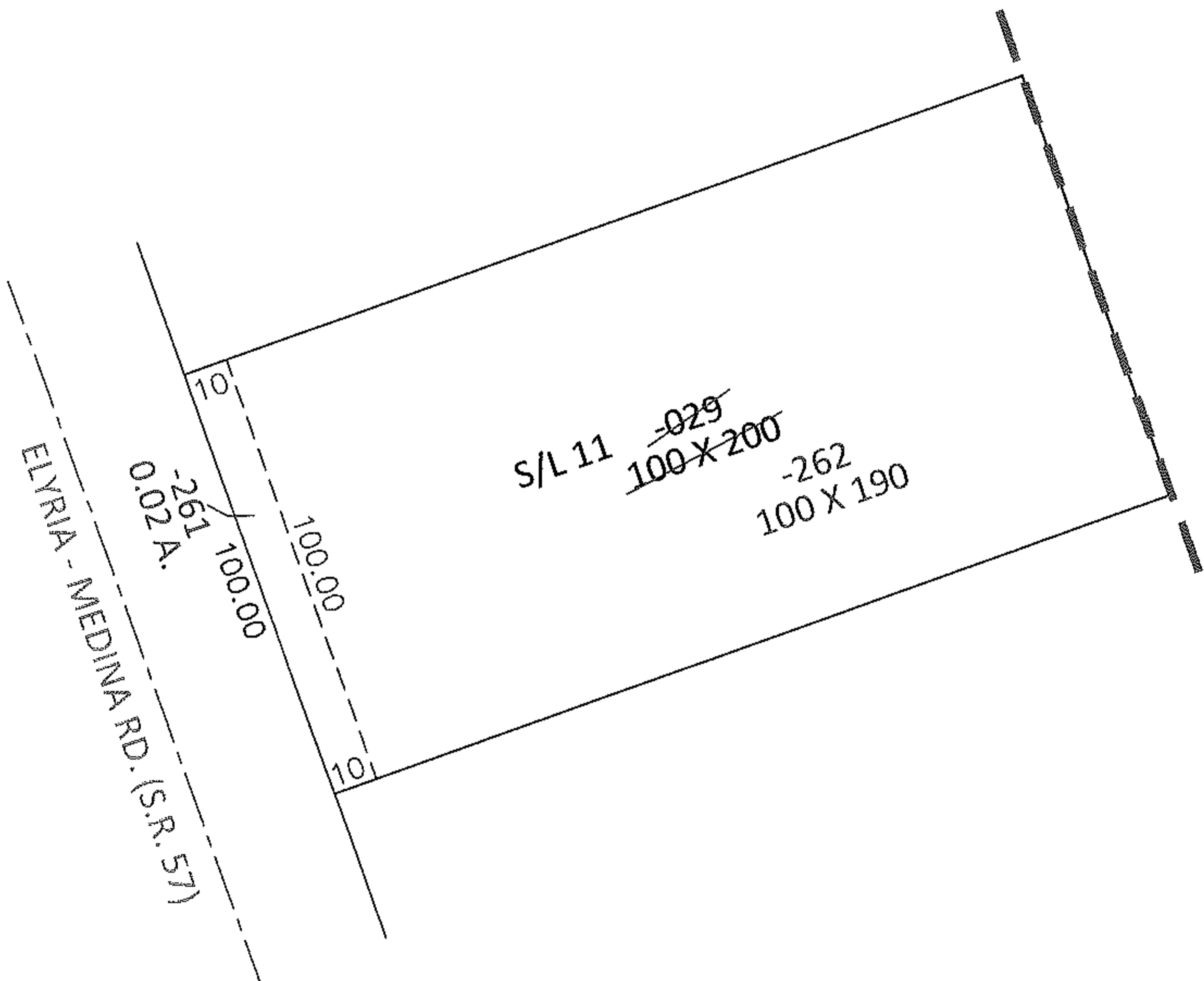
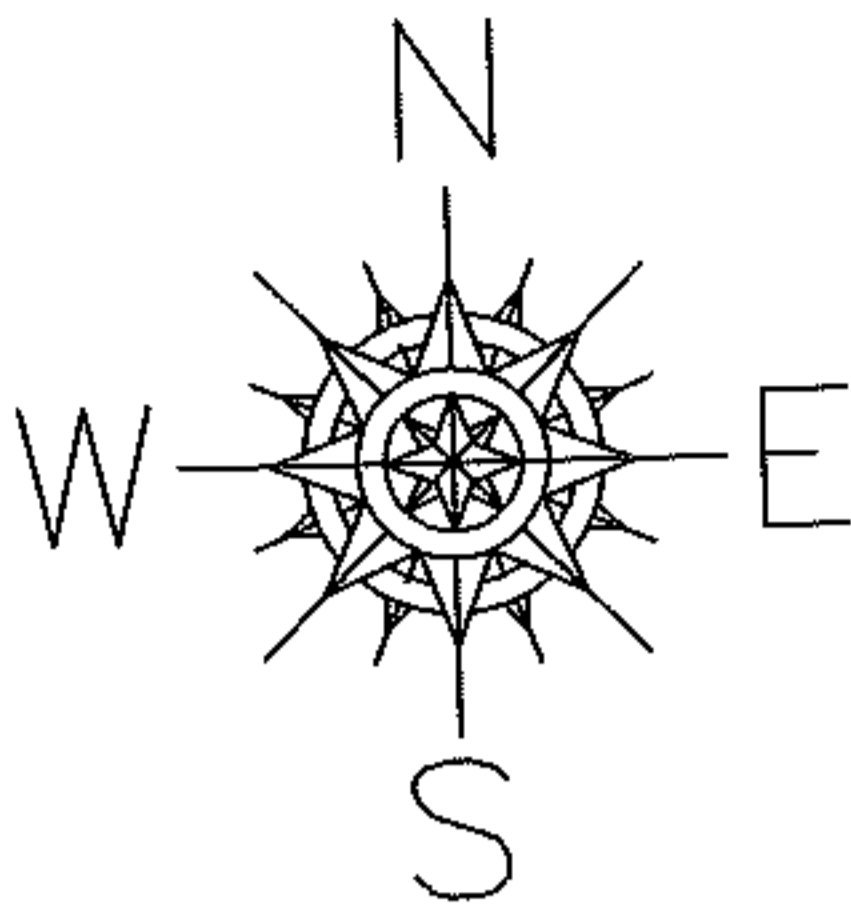


PARENT PARCEL: 11-00-098-000-029
CHILD PARCEL: 11-00-098-000-261, -262
STARTING POINT: NORTHWEST CORNER OF S/L 11 IN C.A. MILLER SUB.(VOL.17 PG.13)

12-00332



SPLITS/DEEDS PROCESSED
LORAIN COUNTY TAX MAP DEPARTMENT
226 MIDDLE AVE. ELYRIA, OHIO

SURVEYED BY: KENNETH C. DEAN JR.
CLOSURE: .00:10,000
MAP PAGE(S): 11-00-098-A
APPROVED BY: RRM DATE: 11-2-12
SCALE: 1"= 50' PRIOR INST.: 20050103398