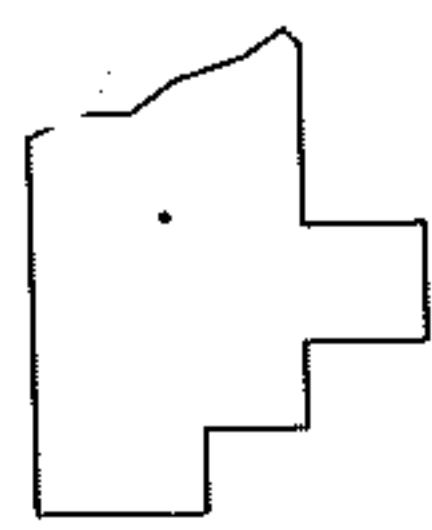
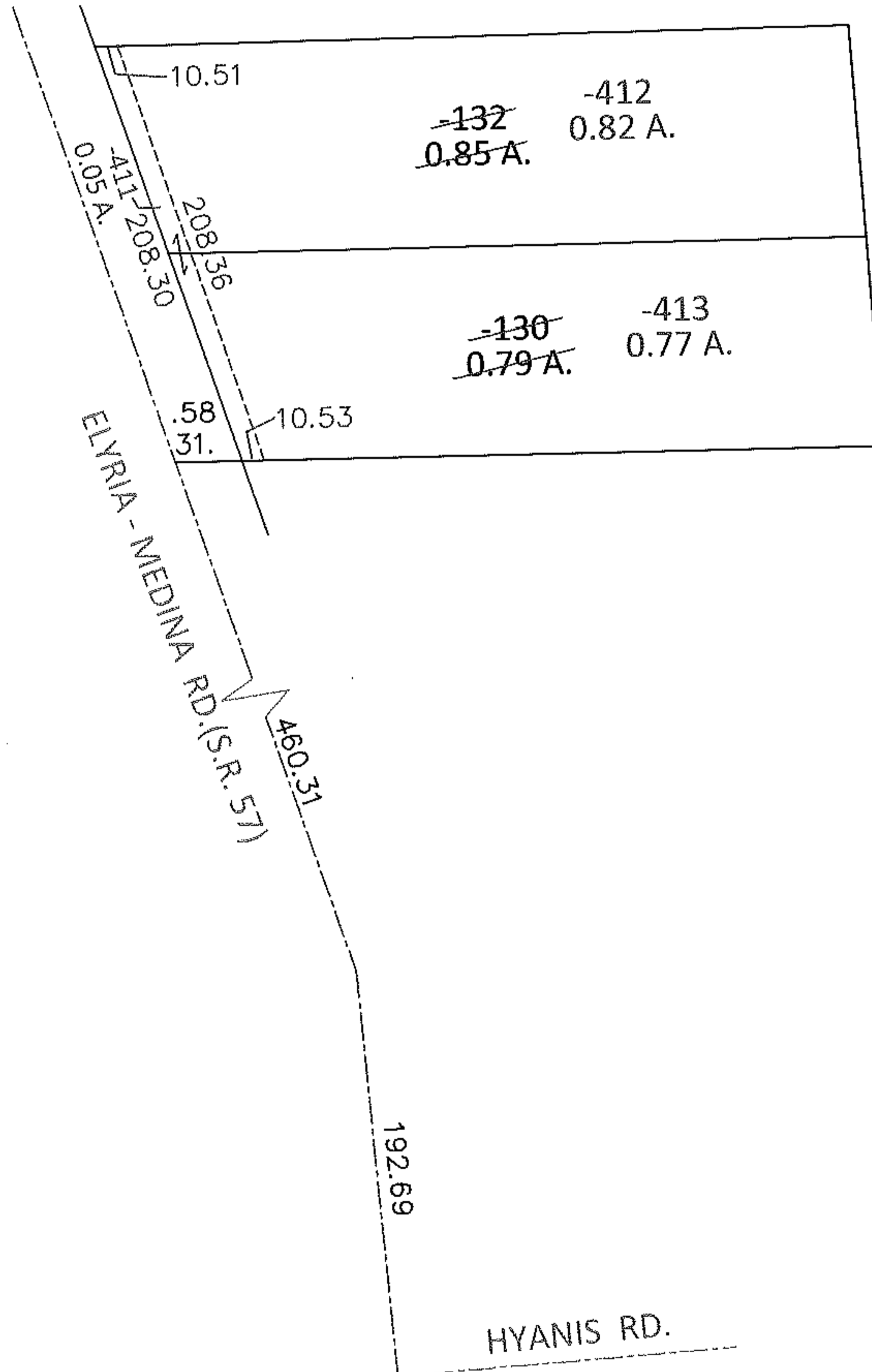
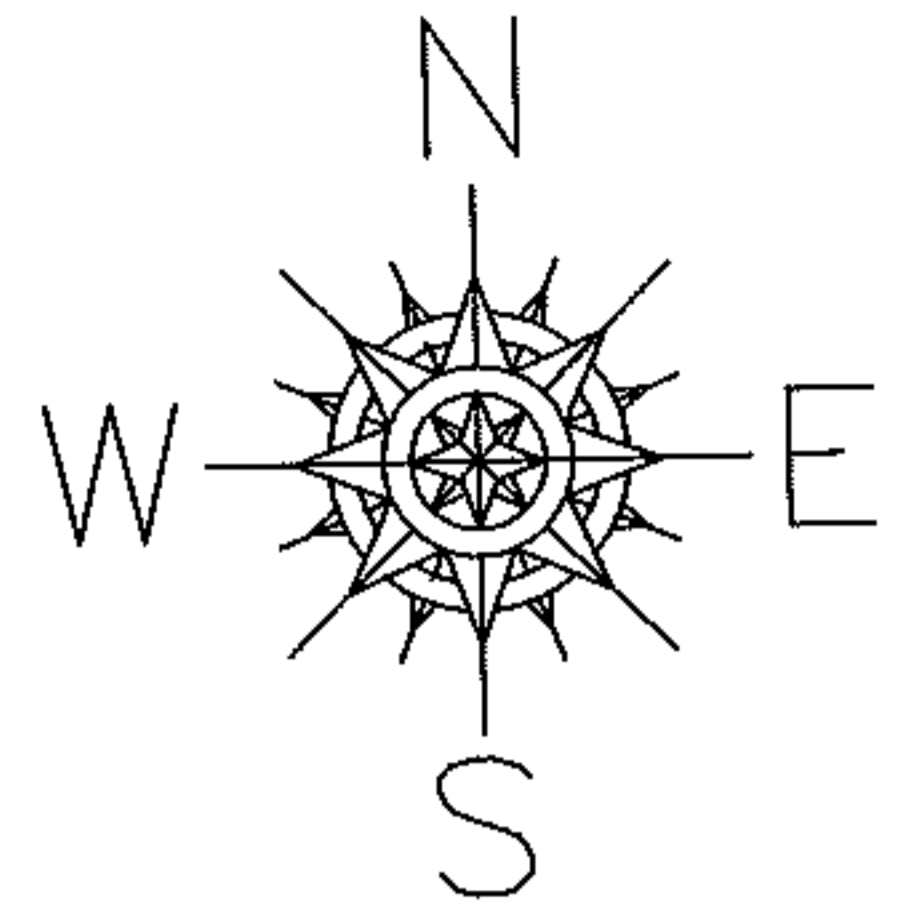


PARENT PARCEL: 11-00-099-000-130, -132

CHILD PARCEL: 11-00-099-000-411 THRU -413

STARTING POINT: INTERSECTION OF C/L OF HYANIS RD. AND C/L OF S.R.57

12-00331



SPLITS/DEEDS PROCESSED

LORAIN COUNTY TAX MAP DEPARTMENT
226 MIDDLE AVE. ELYRIA, OHIO

SURVEYED BY: KENNETH C. DEAN JR.

CLOSURE: .00:10,000

MAP PAGE(S): 11-00-099-B

APPROVED BY: RRM DATE: 11-2-12

SCALE: 1"= 100 PRIOR INST.: 20090316371