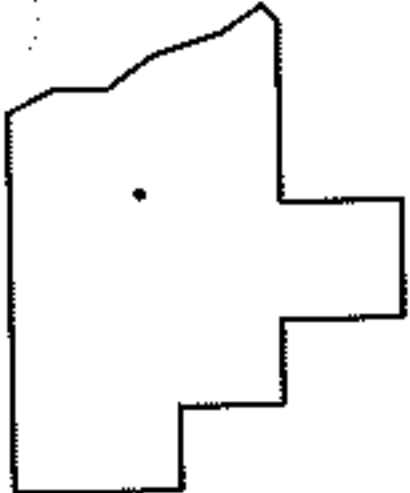
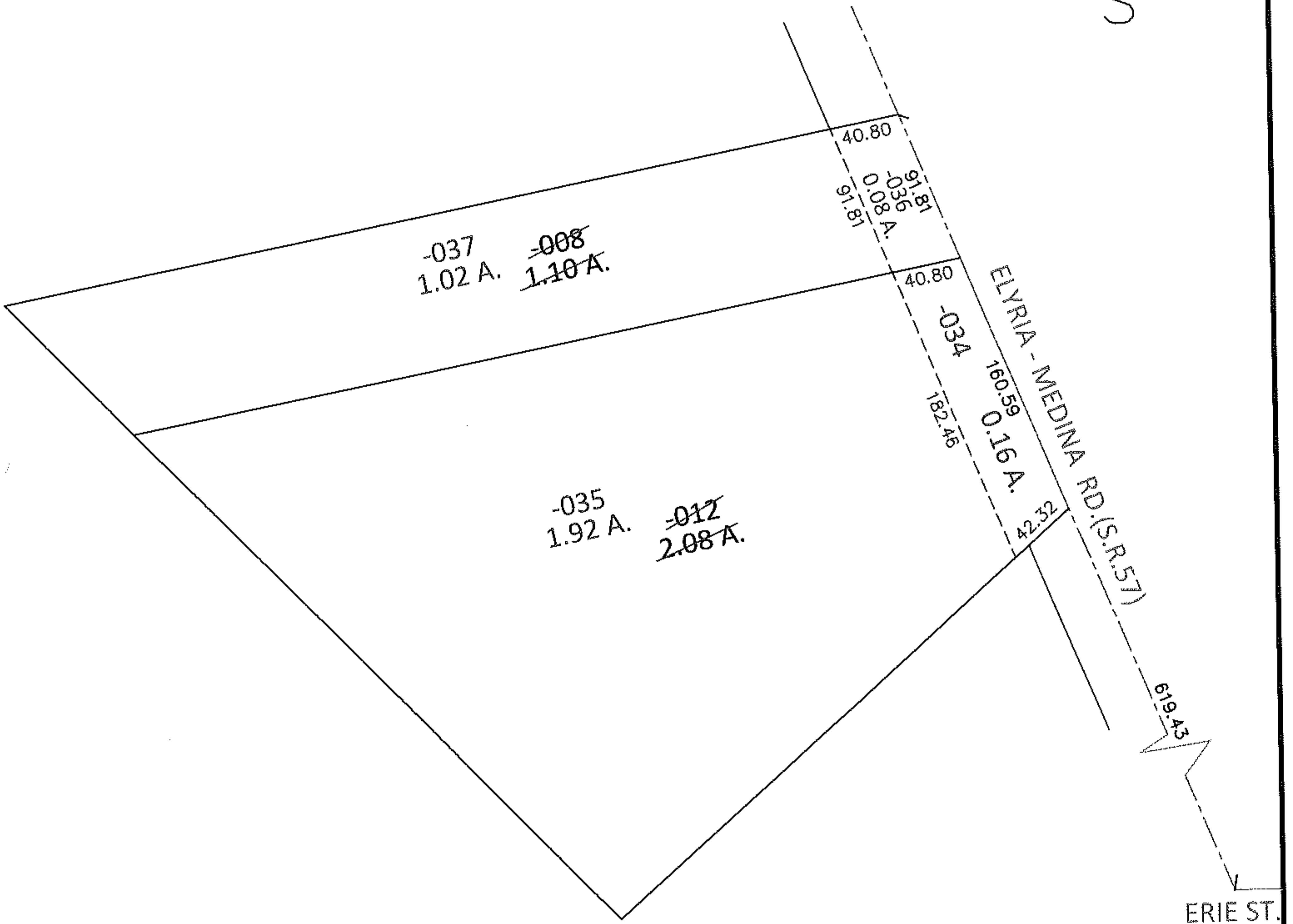
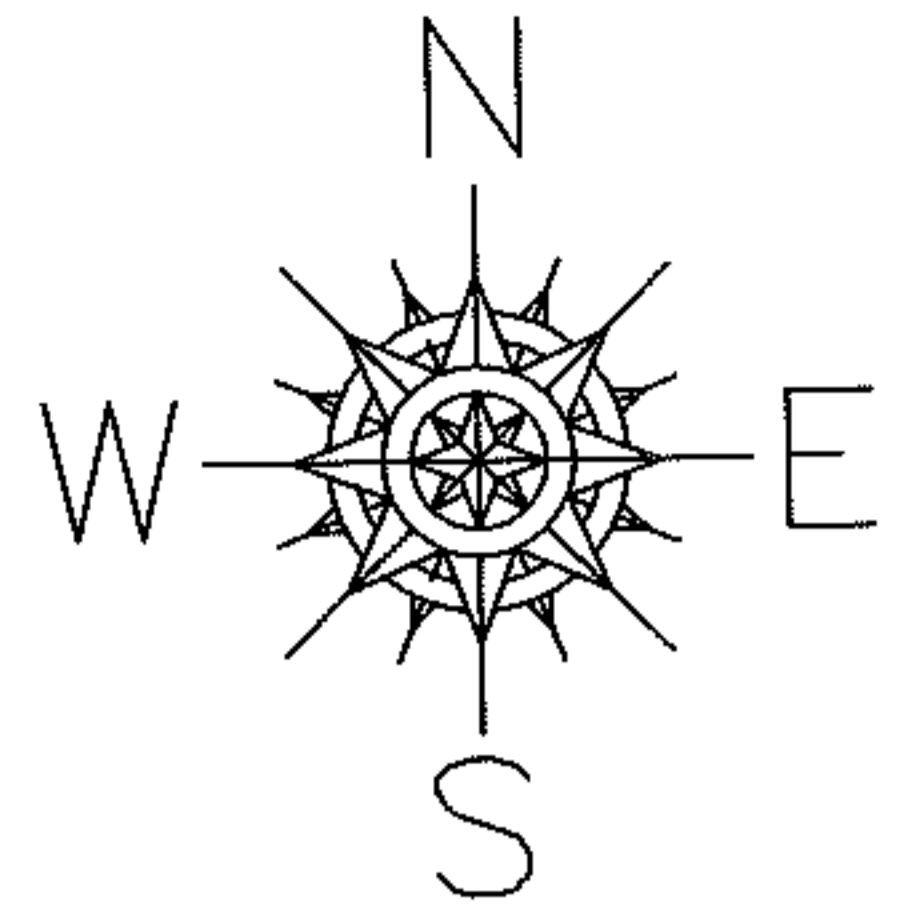


PARENT PARCEL: 11-00-100-101-008, -012

CHILD PARCEL: 11-00-100-101-034 THRU -037

STARTING POINT: INTERSECTION OF C/L OF ERIE ST. AND C/L OF S.R.57

12-00327



SPLITS/DEEDS PROCESSED

LORAIN COUNTY TAX MAP DEPARTMENT
226 MIDDLE AVE. ELYRIA, OHIO

SURVEYED BY: KENNETH C. DEAN JR.

CLOSURE: .01:10,000

MAP PAGE(S): 11-00-100-B

APPROVED BY: RRM DATE: 12-13-12

SCALE: 1"= 100 PRIOR INST.: 20020802312