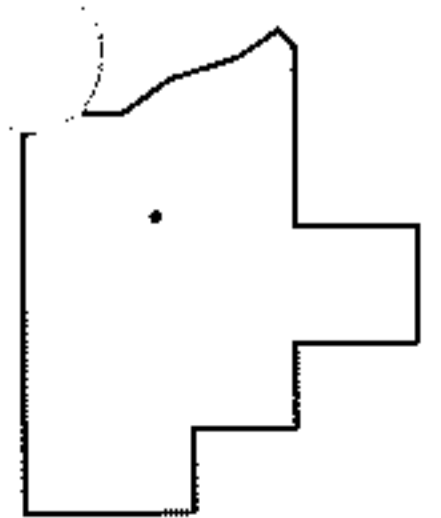
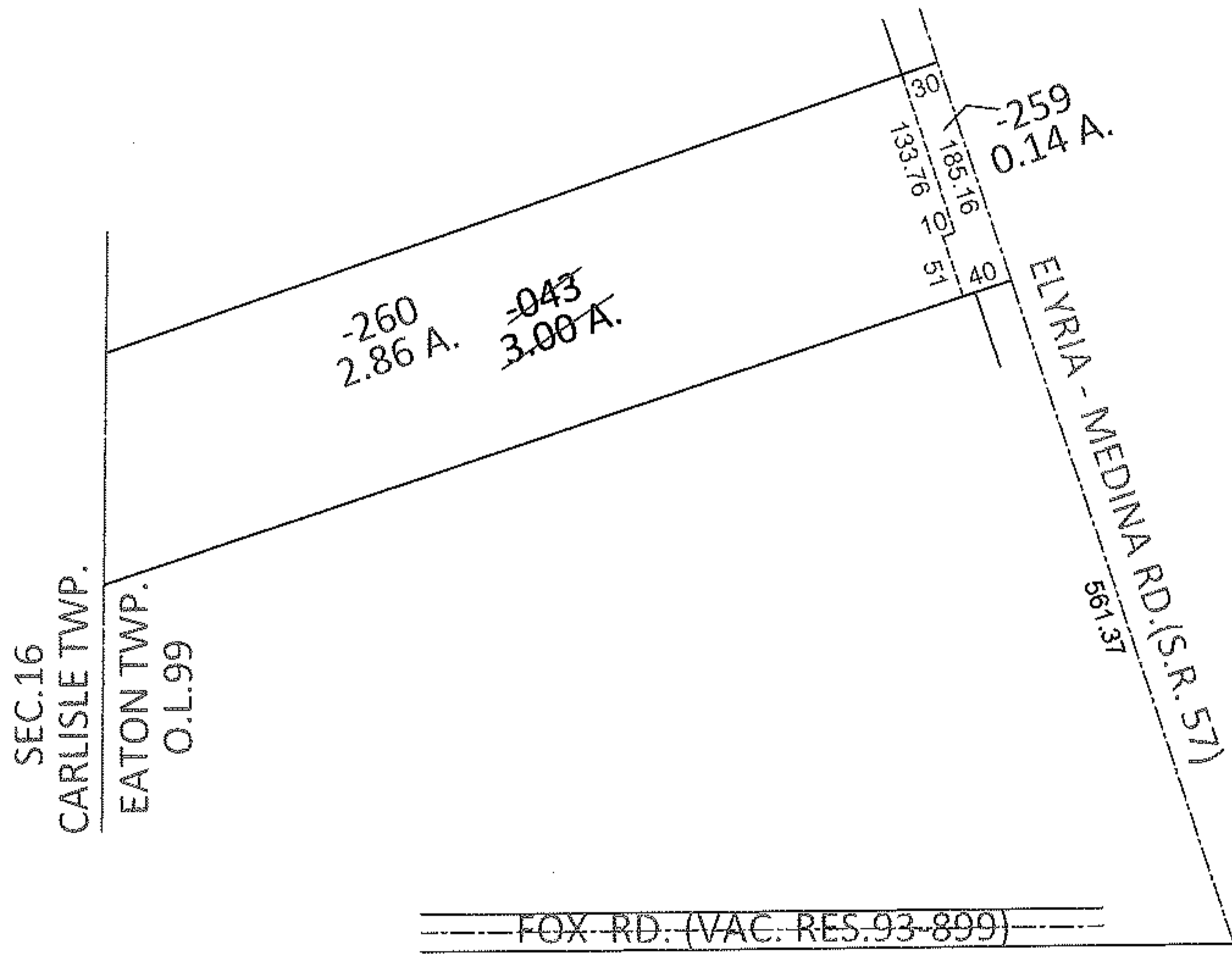
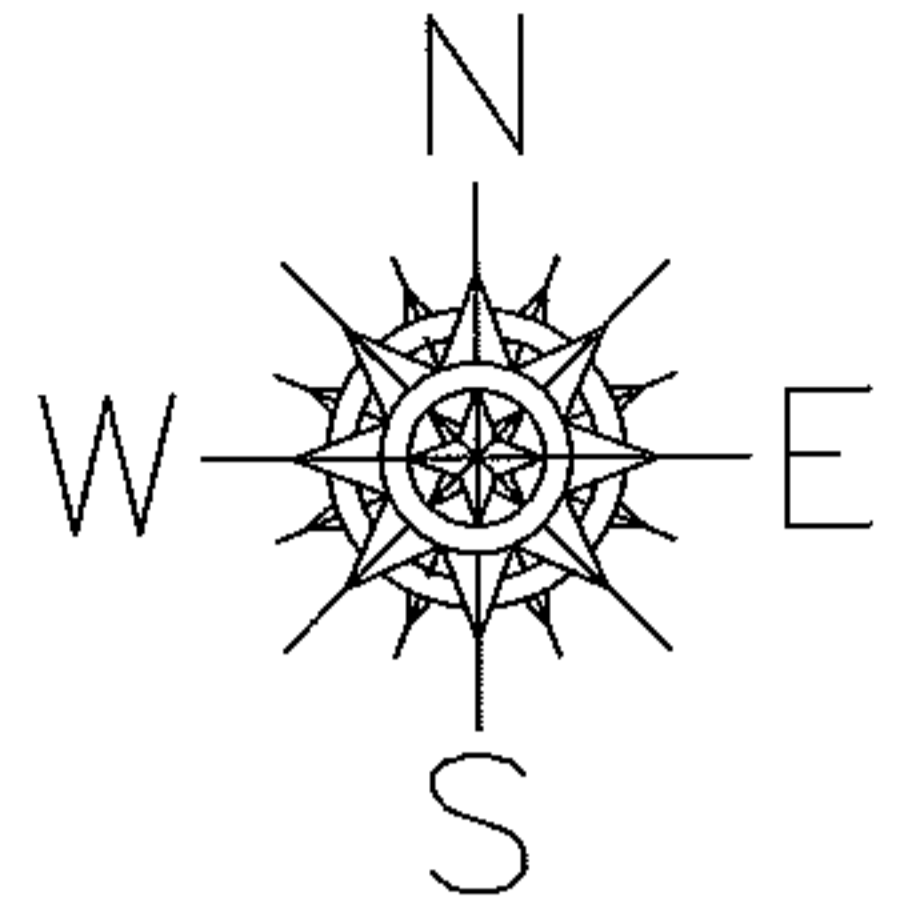


RASPER

PARENT PARCEL: 11-00-098-000-043
CHILD PARCEL: 11-00-098-000-259, -260
STARTING POINT: INTERSECTION OF SOUTH LINE OF VAC. FOX RD. AND C/L OF S.R.57

12-00323



SPLITS/DEEDS PROCESSED
LORAIN COUNTY TAX MAP DEPARTMENT
226 MIDDLE AVE. ELYRIA, OHIO

SURVEYED BY: KENNETH C. DEAN JR.
CLOSURE: .01:10,000
MAP PAGE(S): 11-00-098-A
APPROVED BY: RRM DATE: 10-5-12
SCALE: 1"= 200 PRIOR INST.: DV 1228/558