

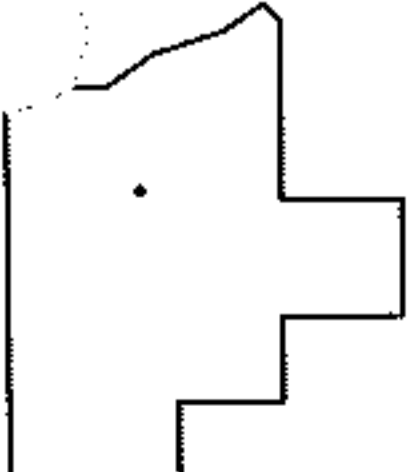
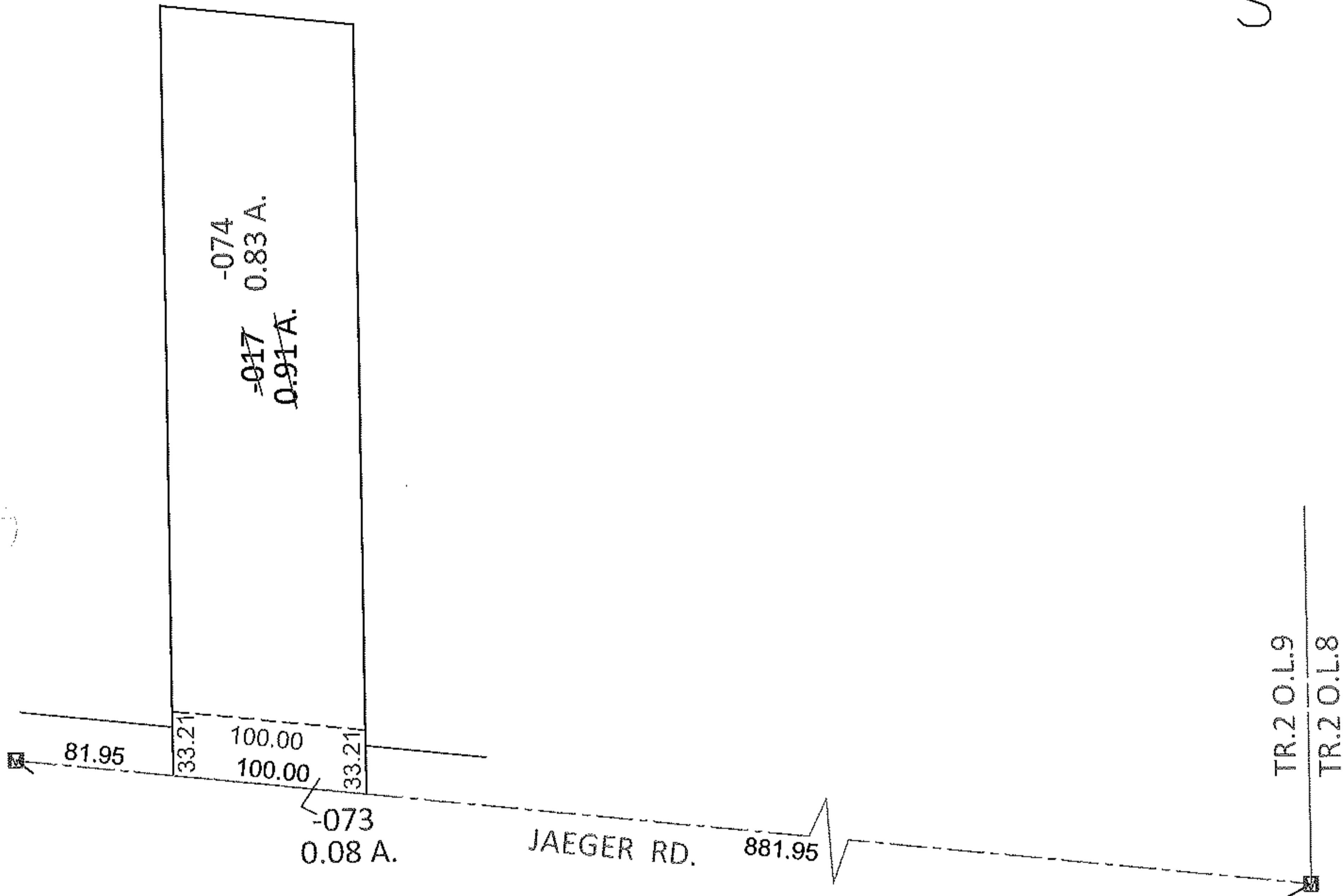
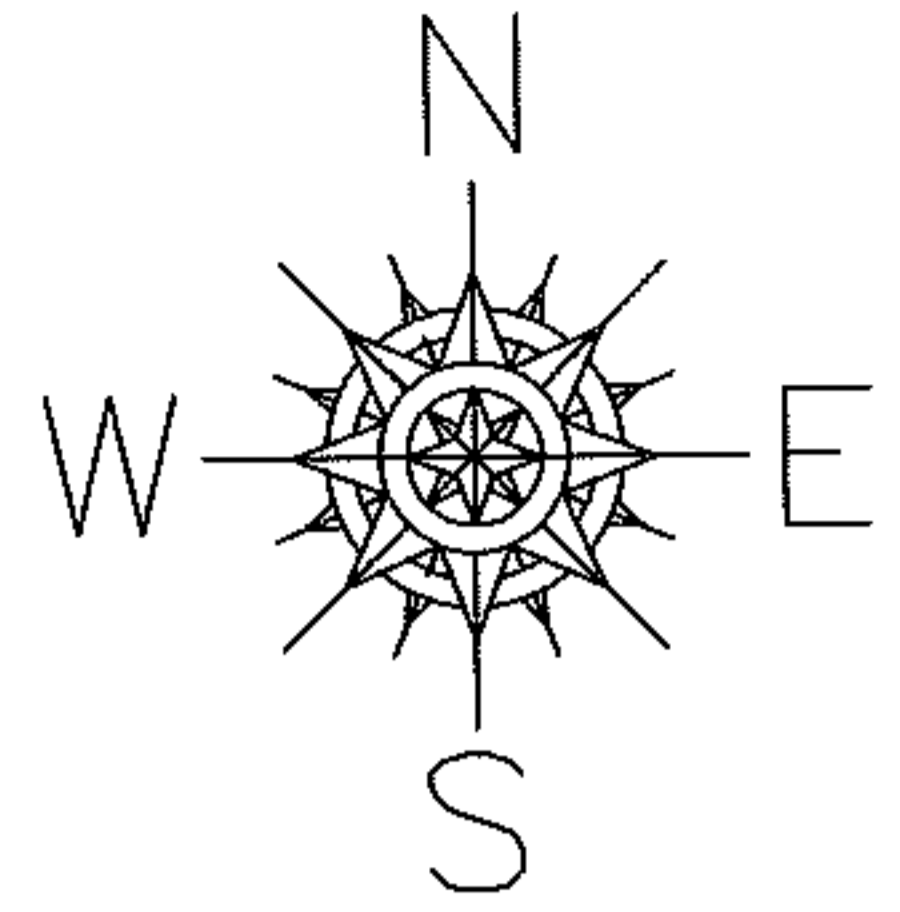
RAS 05/12

PARENT PARCEL: 02-02-009-101-017

CHILD PARCEL: 02-02-009-101-073, -074

12-00319

STARTING POINT: AT A MON BOX AT THE INTERSECTION OF C/L OF JAEGER RD. AND EAST LINE OF TR.2 O.L.9



**SPLITS/DEEDS PROCESSED**

LORAIN COUNTY TAX MAP DEPARTMENT  
226 MIDDLE AVE. ELYRIA, OHIO

SURVEYED BY: TREVOR A. BIXLER

CLOSURE: .00:10,000

MAP PAGE(S): 2-02-009-B

APPROVED BY: RRM DATE: 10-5-12

SCALE: 1"= 100 PRIOR INST.: OR 304/43