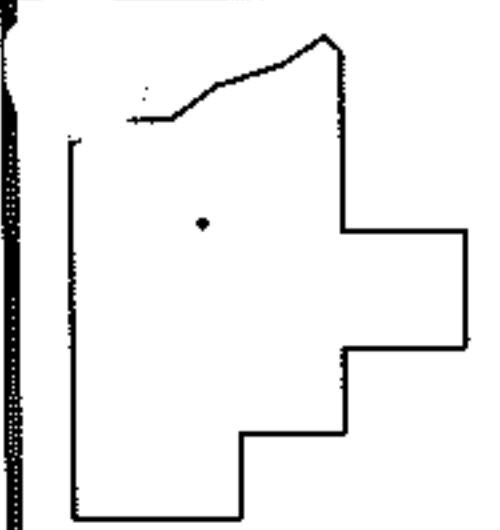
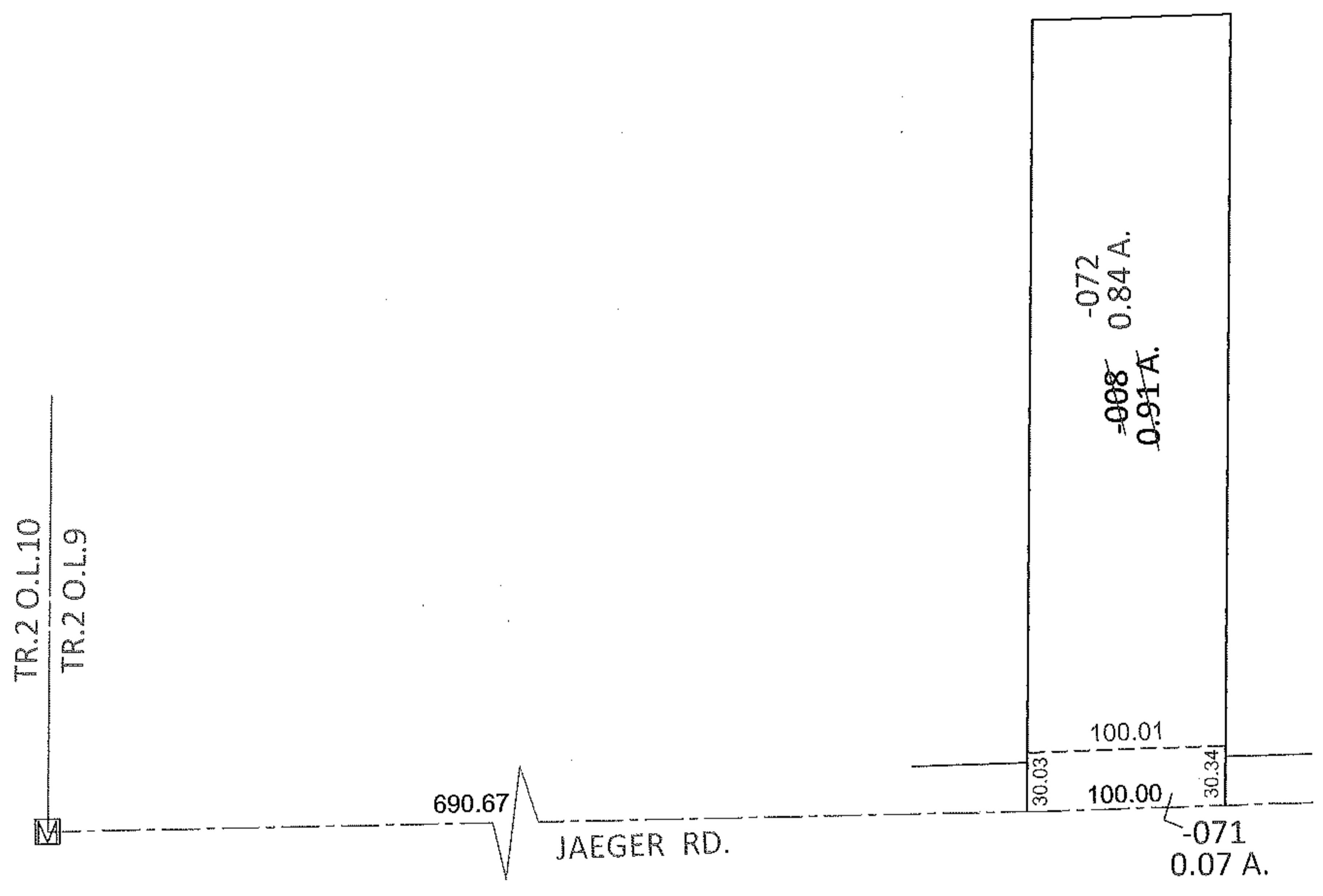
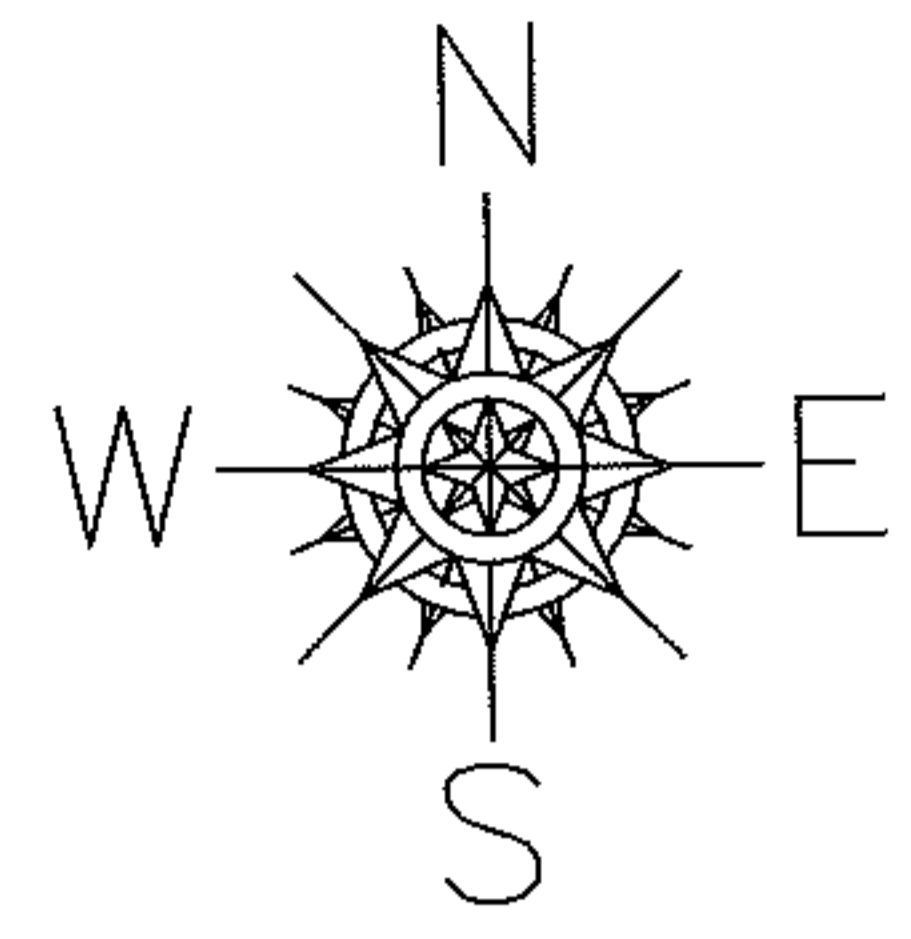


BASTER

PARENT PARCEL: 02-02-009-101-008  
CHILD PARCEL: 02-02-009-101-071, -072  
STARTING POINT: AT A MON BOX AT THE INTERSECTION OF C/L OF JAEGER RD. AND WEST LINE OF TR.2 O.L.9

12-00318



**SPLITS/DEEDS PROCESSED**  
LORAIN COUNTY TAX MAP DEPARTMENT  
226 MIDDLE AVE. ELYRIA, OHIO

SURVEYED BY: TREVOR A. BIXLER  
CLOSURE: .01:10,000  
MAP PAGE(S): 2-02-009-A  
APPROVED BY: RRM DATE: 10-5-12  
SCALE: 1"= 100 PRIOR INST.: OR 91/722