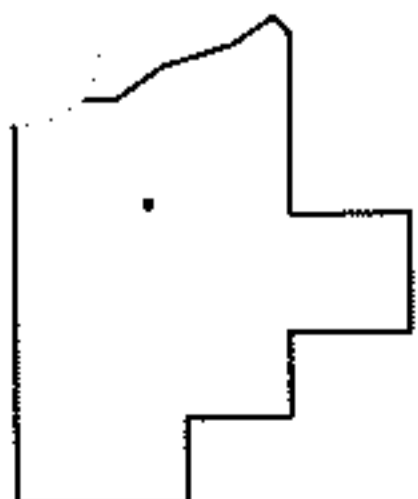
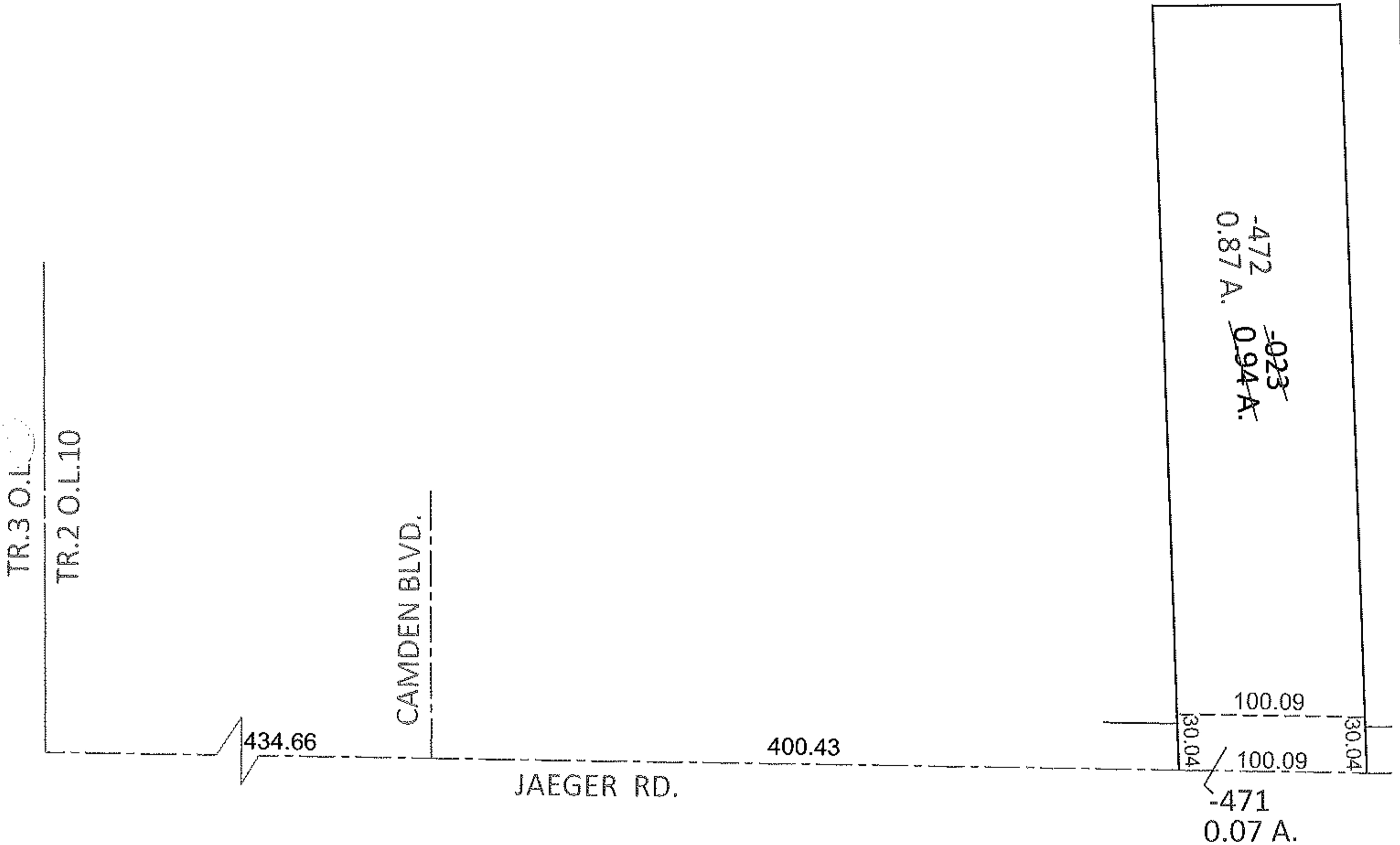
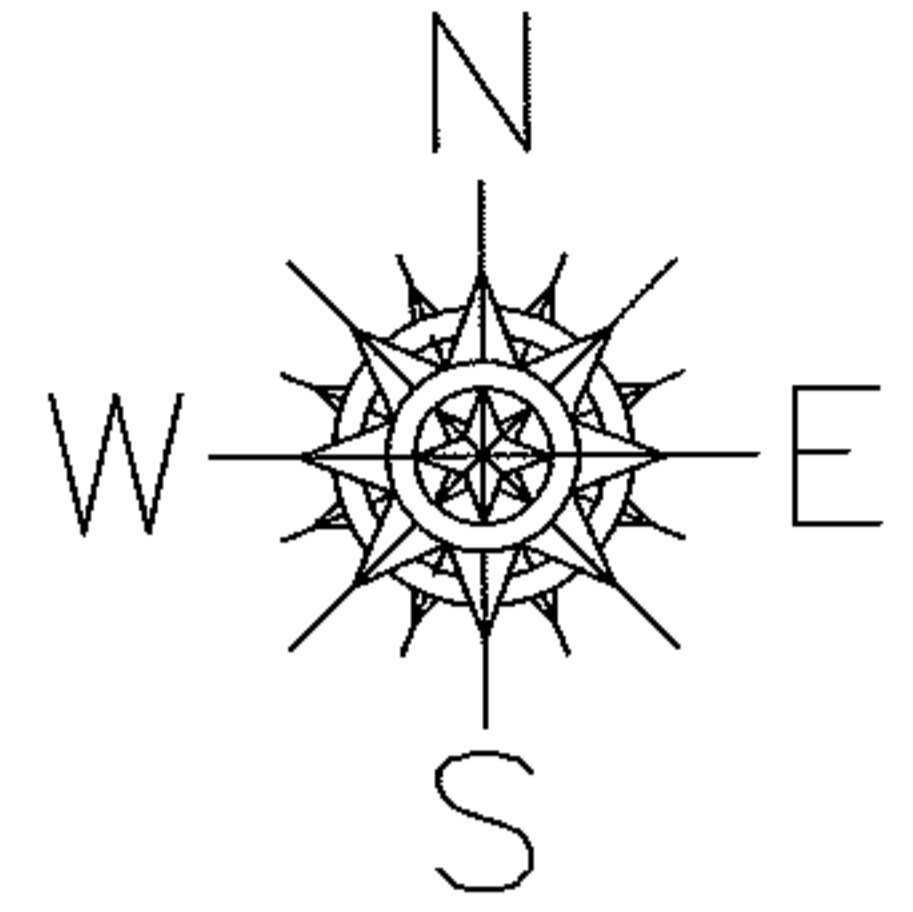


PARENT PARCEL: 02-02-010-000-023

CHILD PARCEL: 02-02-010-000-471, -472

STARTING POINT: INTERSECTION OF C/L OF JAEGER RD. AND WEST LINE OF TR.2 O.L.10

12-00308



**SPLITS/DEEDS PROCESSED**

LORAIN COUNTY TAX MAP DEPARTMENT  
226 MIDDLE AVE. ELYRIA, OHIO

SURVEYED BY: TREVOR A. BIXLER

CLOSURE: .00:10,000

MAP PAGE(S): 2-02-010-A

APPROVED BY: RRM DATE: 9-20-12

SCALE: 1"= 100 PRIOR INST.: 20080274598