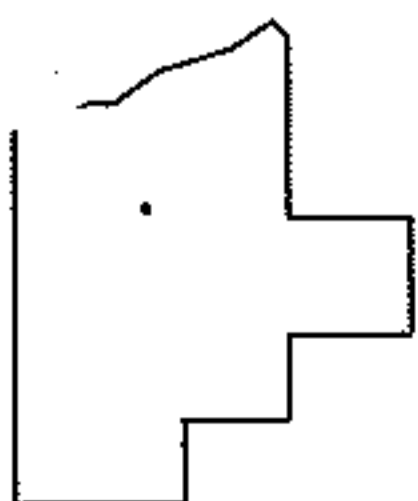
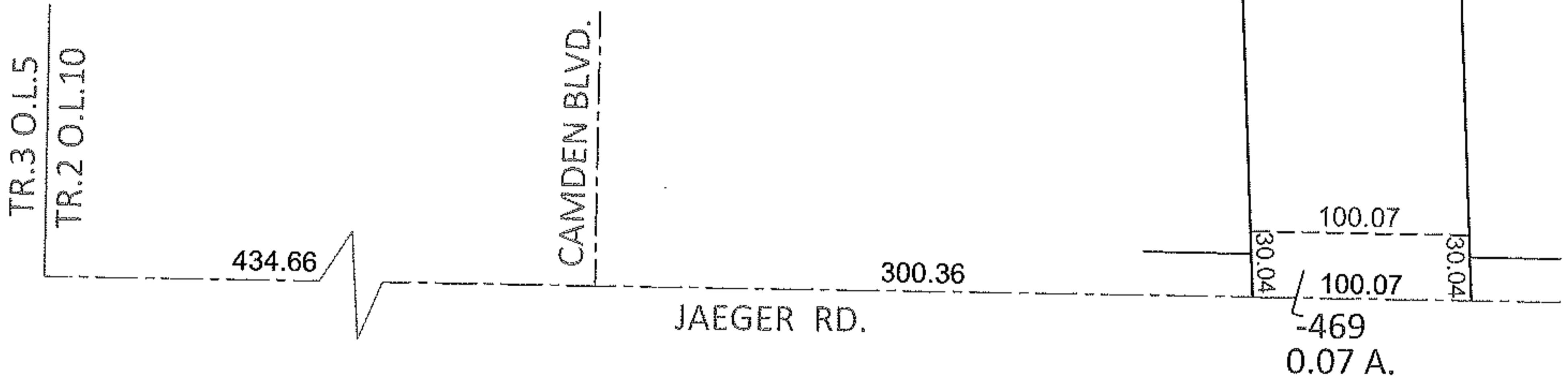
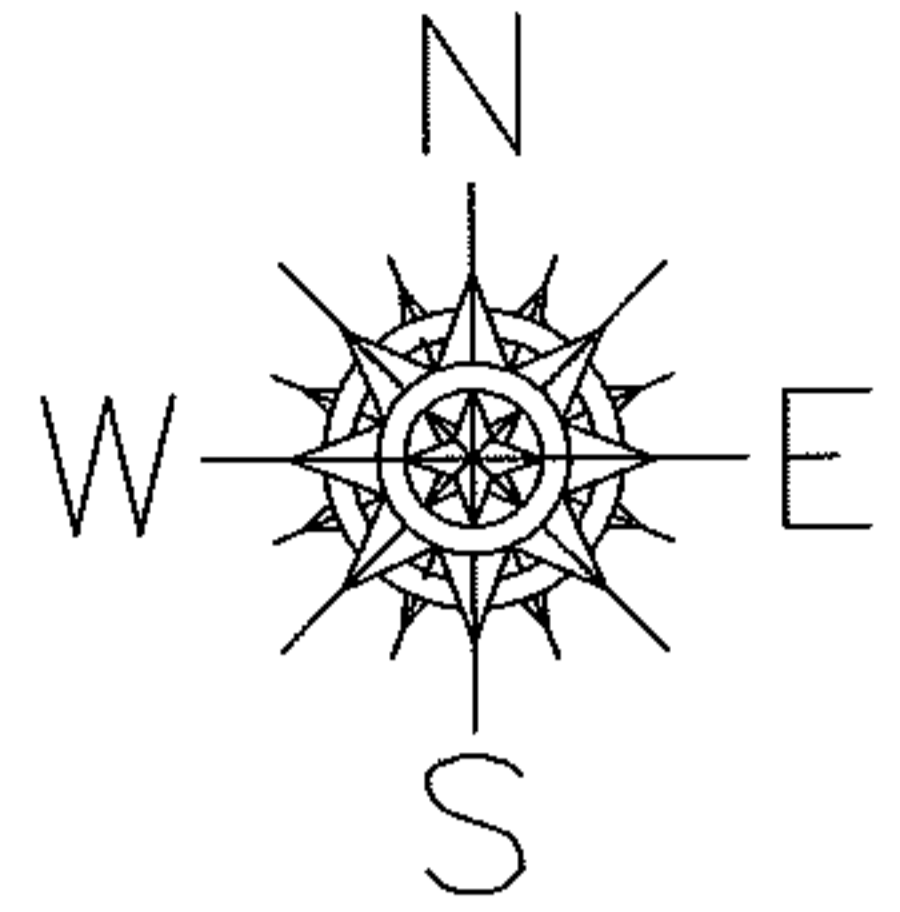


PARENT PARCEL: 02-02-010-000-022

CHILD PARCEL: 02-02-010-000-469, -470

STARTING POINT: INTERSECTION OF C/L OF JAEGER RD. AND WEST LINE OF TR.2 O.L.10

12-00307



**SPLITS/DEEDS PROCESSED**

LORAIN COUNTY TAX MAP DEPARTMENT  
226 MIDDLE AVE. ELYRIA, OHIO

SURVEYED BY: TREVOR A. BIXLER

CLOSURE: .00:10,000

MAP PAGE(S): 2-02-010-A

APPROVED BY: RRM DATE: 9-20-12

SCALE: 1"= 100 PRIOR INST.: 20050112774