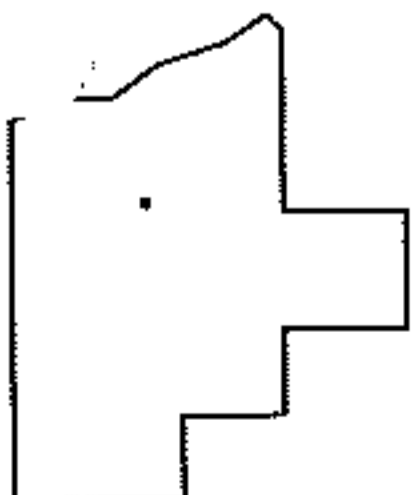
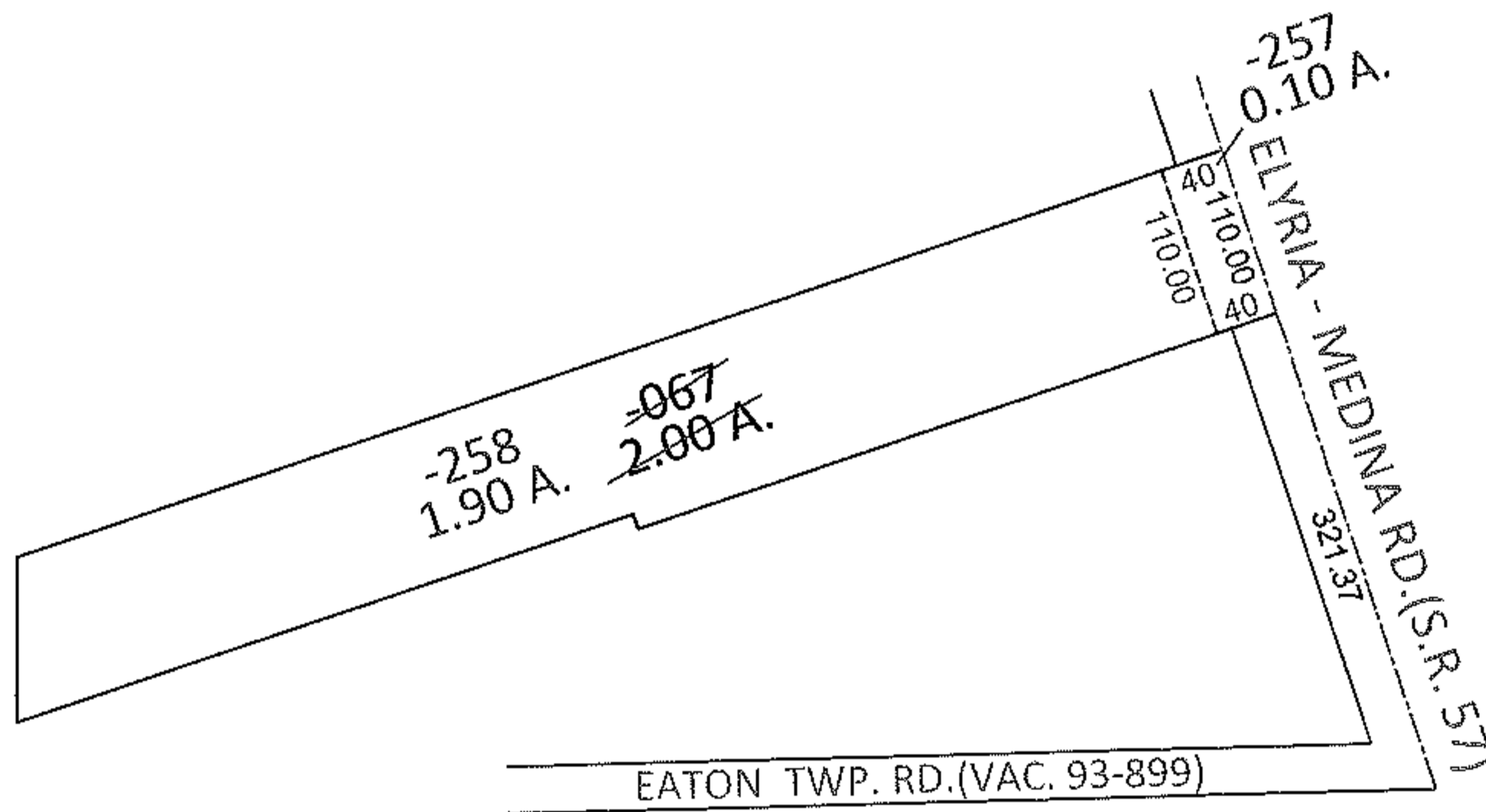
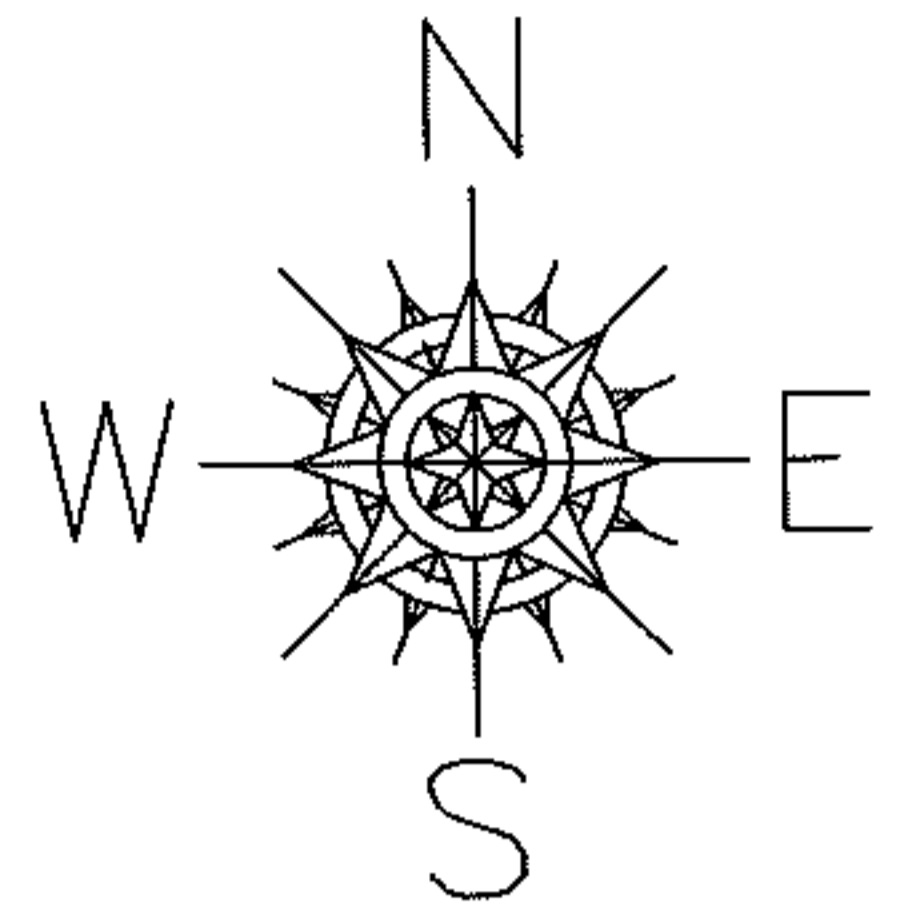


PARENT PARCEL: 11-00-098-000-067

CHILD PARCEL: 11-00-098-000-257, -258

STARTING POINT: INTERSECTION OF C/L OF S.R.57 AND SOUTH LINE OF VAC. EATON TWP. RD.

12-00302



**SPLITS/DEEDS PROCESSED**

LORAIN COUNTY TAX MAP DEPARTMENT  
226 MIDDLE AVE. ELYRIA, OHIO

SURVEYED BY: KENNETH C. DEAN JR.

CLOSURE: .00:10,000

MAP PAGE(S): 11-00-098-A

APPROVED BY: RRM DATE: 9-20-12

SCALE: 1"= 200 PRIOR INST.: 20050090497