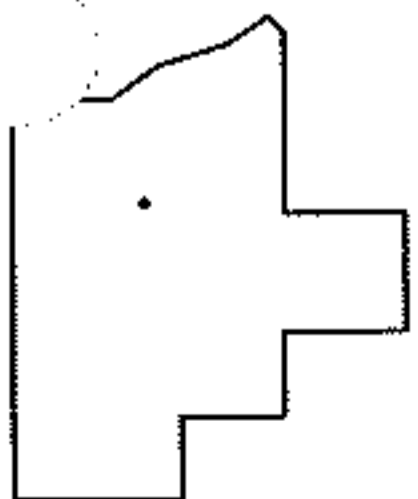
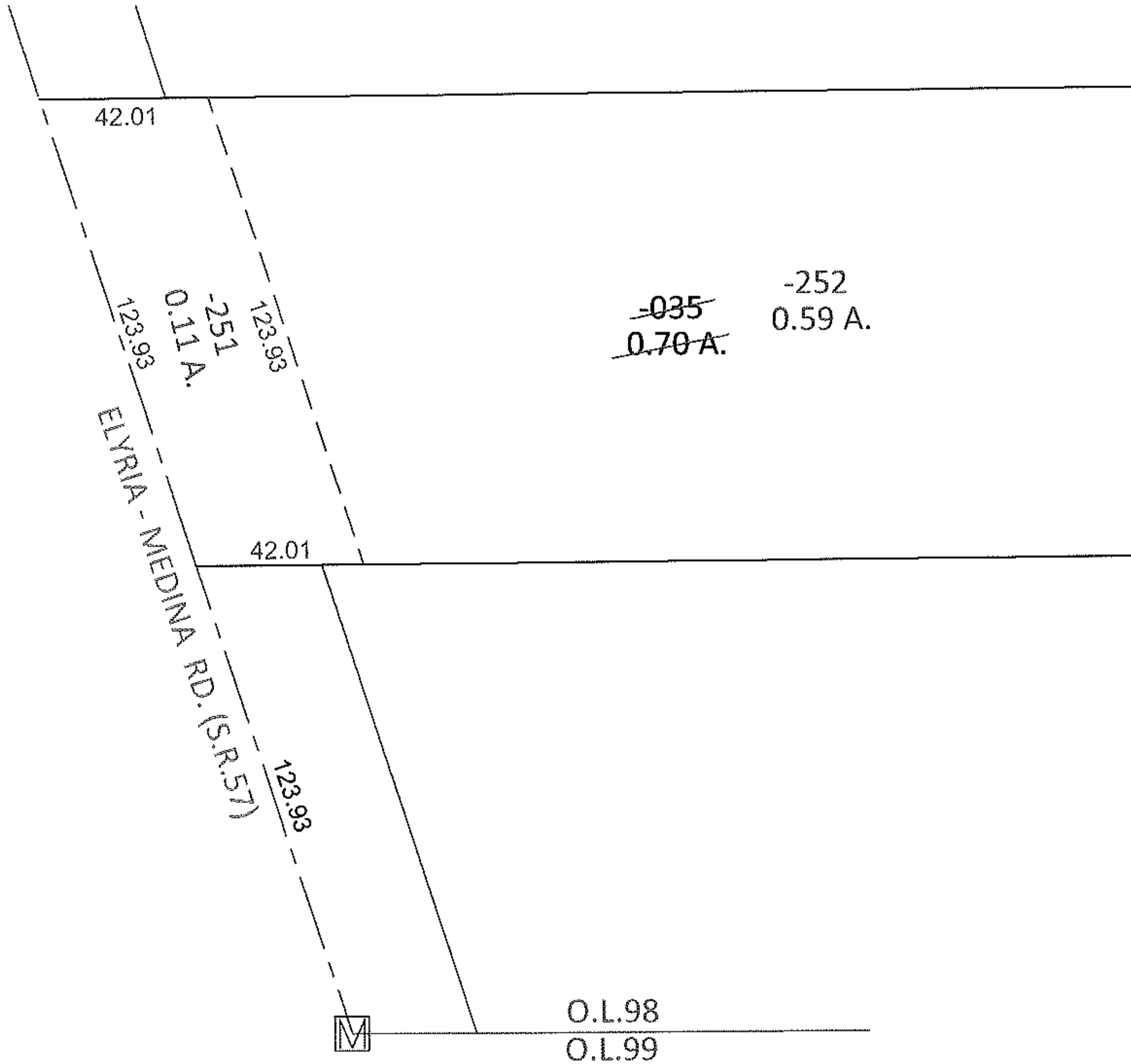
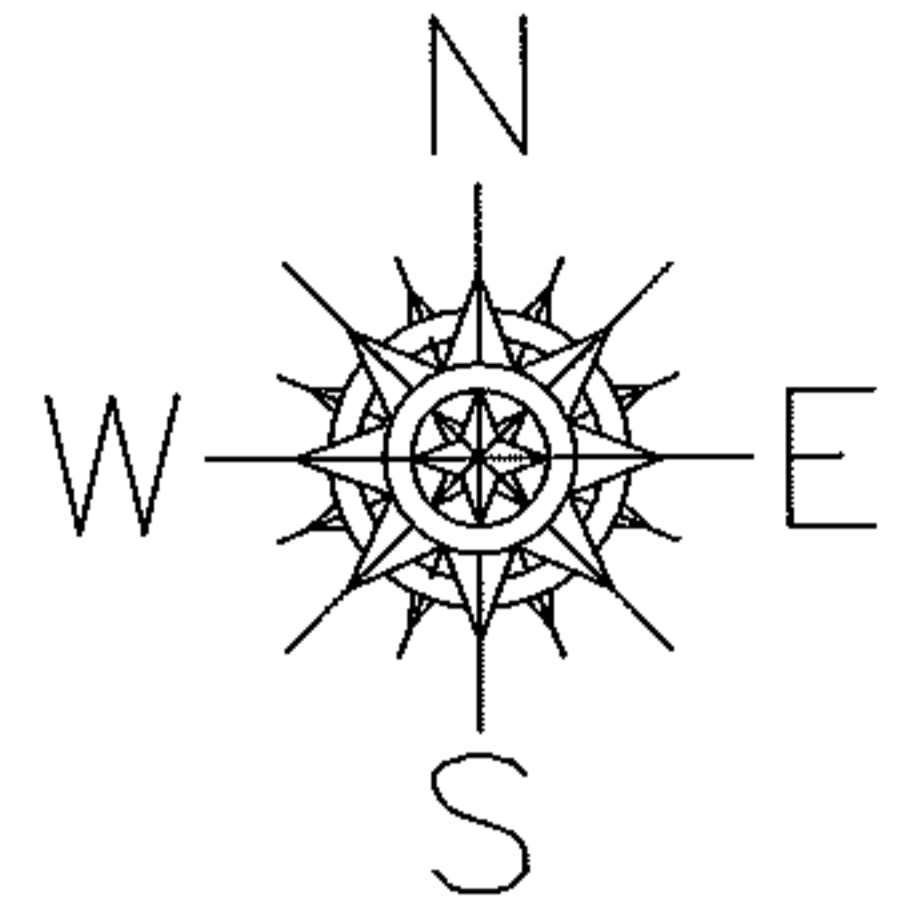


PARENT PARCEL: 11-00-098-000-035

CHILD PARCEL: 11-00-098-000-251, -252

STARTING POINT: AT A MON BOX AT THE INTERSECTION OF C/L OF S.R.57 AND SOUTH LINE OF O.L.98

12-00288



SPLITS/DEEDS PROCESSED

LORAIN COUNTY TAX MAP DEPARTMENT
226 MIDDLE AVE. ELYRIA, OHIO

SURVEYED BY: KENNETH C. DEAN JR.

CLOSURE: .00:10,000

MAP PAGE(S): 11-00-098-A

APPROVED BY: RRM DATE: 8-3-12

SCALE: 1" = 50' PRIOR INST.: OR 1355/864