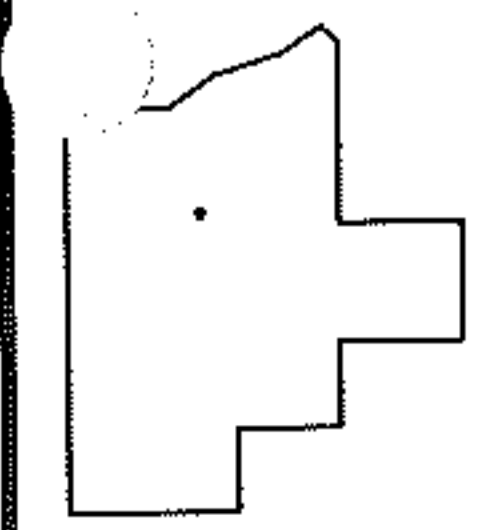
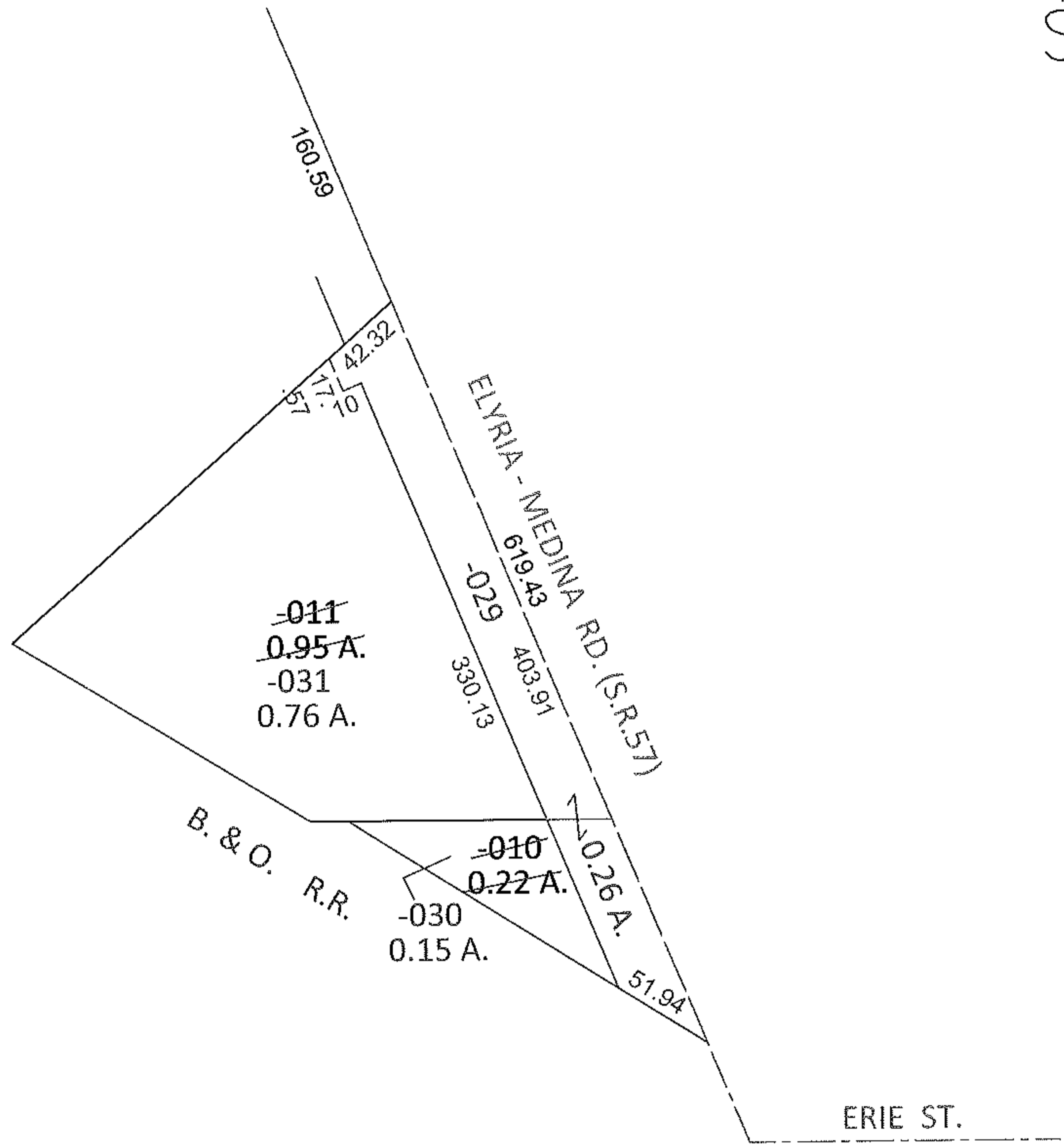
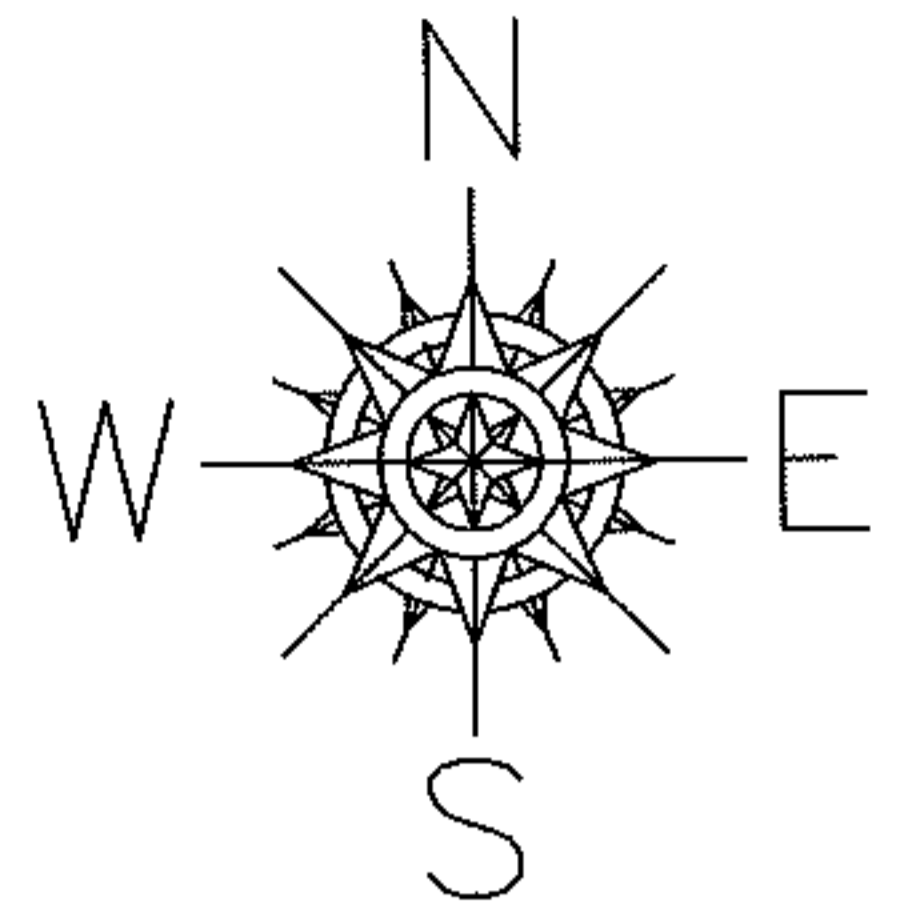


PARENT PARCEL: 11-00-100-101-010, -011
CHILD PARCEL: 11-00-100-101-029 THRU -031
STARTING POINT: INTERSECTION OF C/L OF S.R.57 AND C/L OF ERIE ST.

12-00285



SPLITS/DEEDS PROCESSED
LORAIN COUNTY TAX MAP DEPARTMENT
226 MIDDLE AVE. ELYRIA, OHIO

SURVEYED BY: KENNETH C. DEAN JR.
CLOSURE: .01:10,000
MAP PAGE(S): 11-00-100-B
APPROVED BY: RRM DATE: 8-23-12
SCALE: 1"= 100 PRIOR INST.: 20040996082