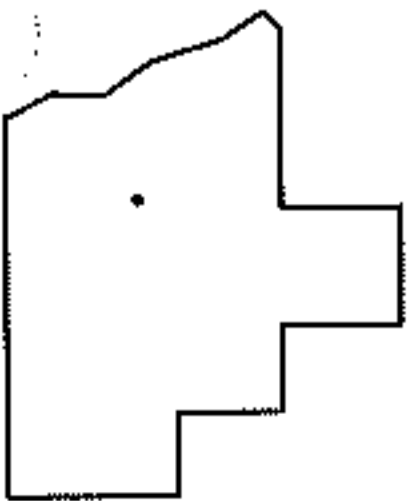
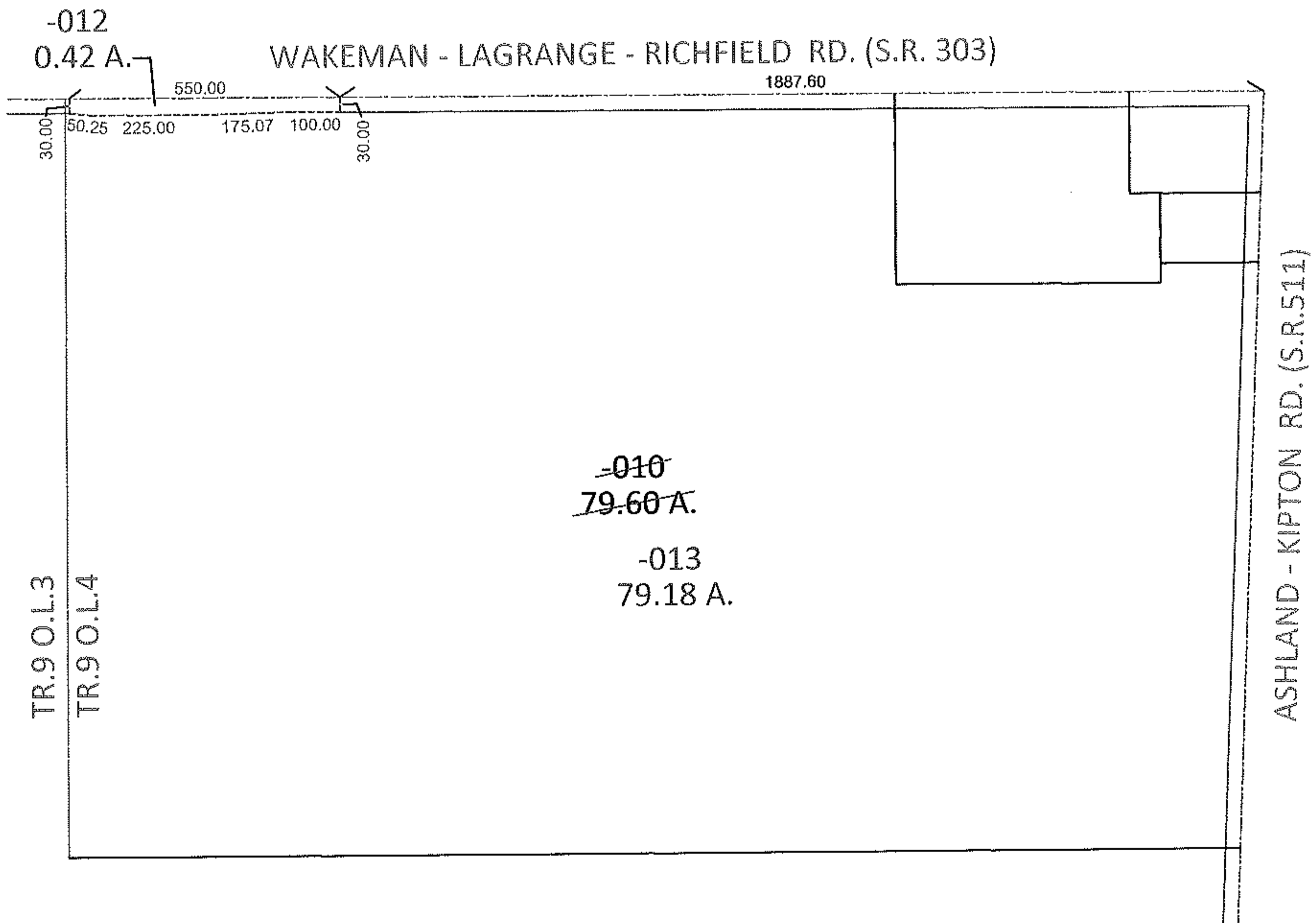
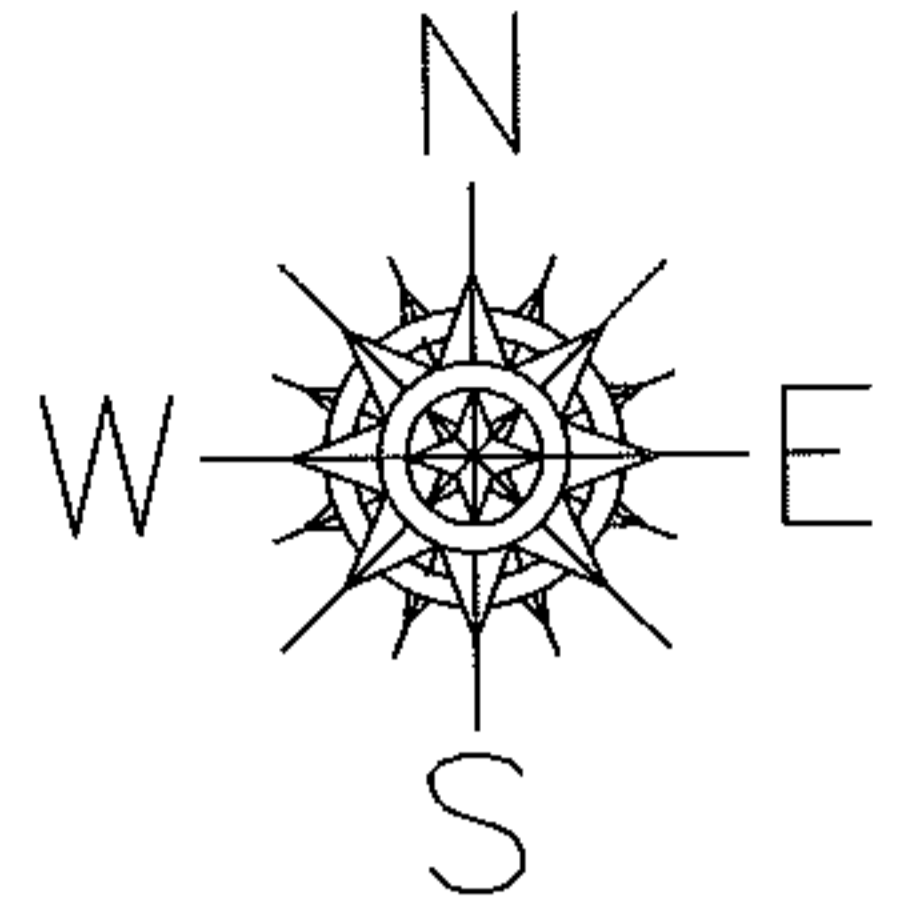


PARENT PARCEL: 13-09-004-000-010

CHILD PARCEL: 13-09-004-000-012, -013

12-00282

ARTING POINT: INTERSECTION OF C/L OF S.R.303 AND C/L OF S.R.511



SPLITS/DEEDS PROCESSED

LORAIN COUNTY TAX MAP DEPARTMENT
226 MIDDLE AVE. ELYRIA, OHIO

SURVEYED BY: SCOTT J. HAWKINS

CLOSURE: .00:10,000

MAP PAGE(S): 13-F

APPROVED BY: RRM DATE: 6-14-12

SCALE: 1"= 400 PRIOR INST.: 20030891724