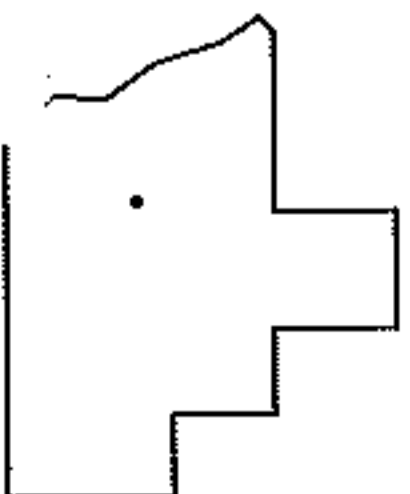
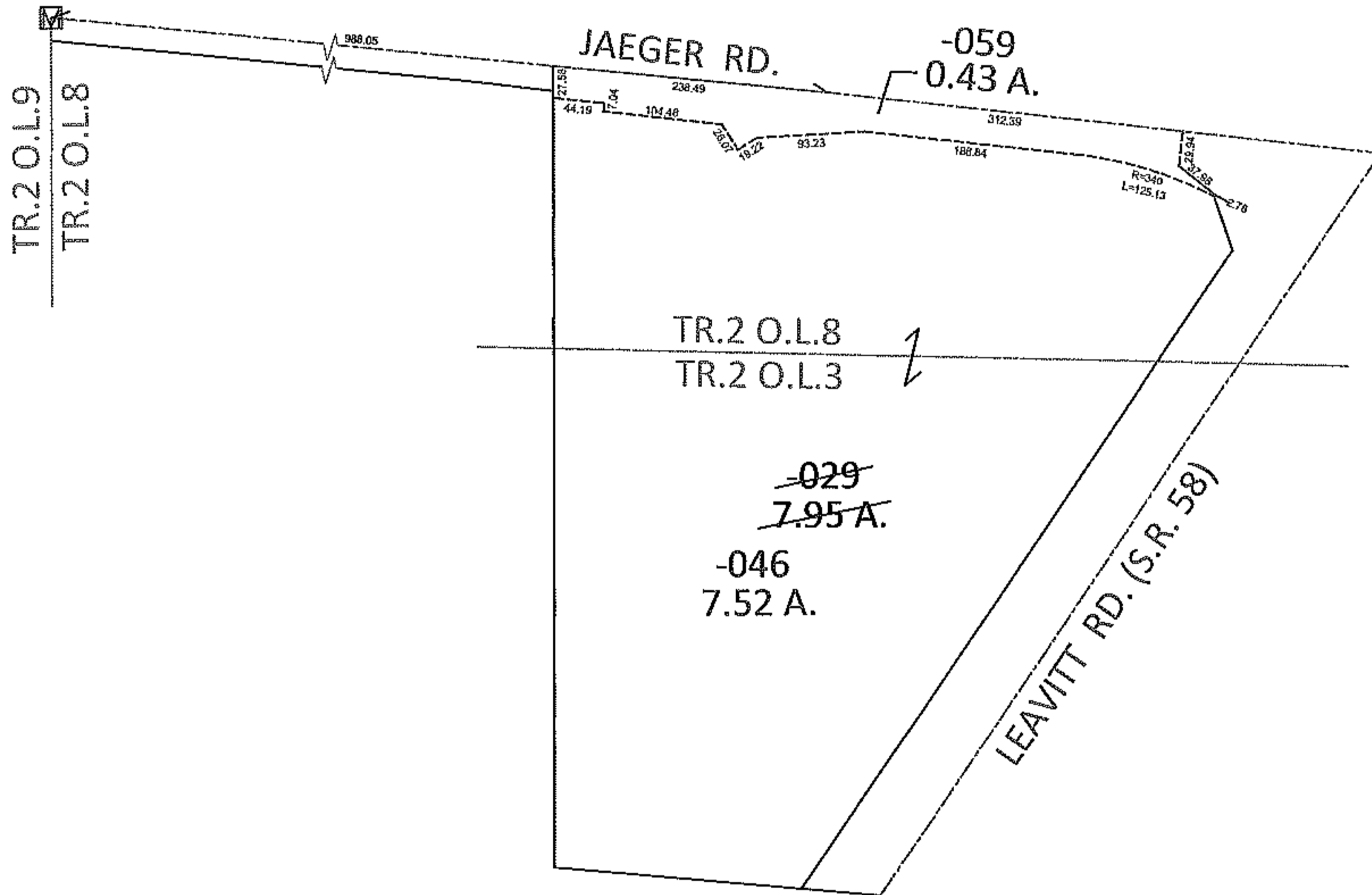
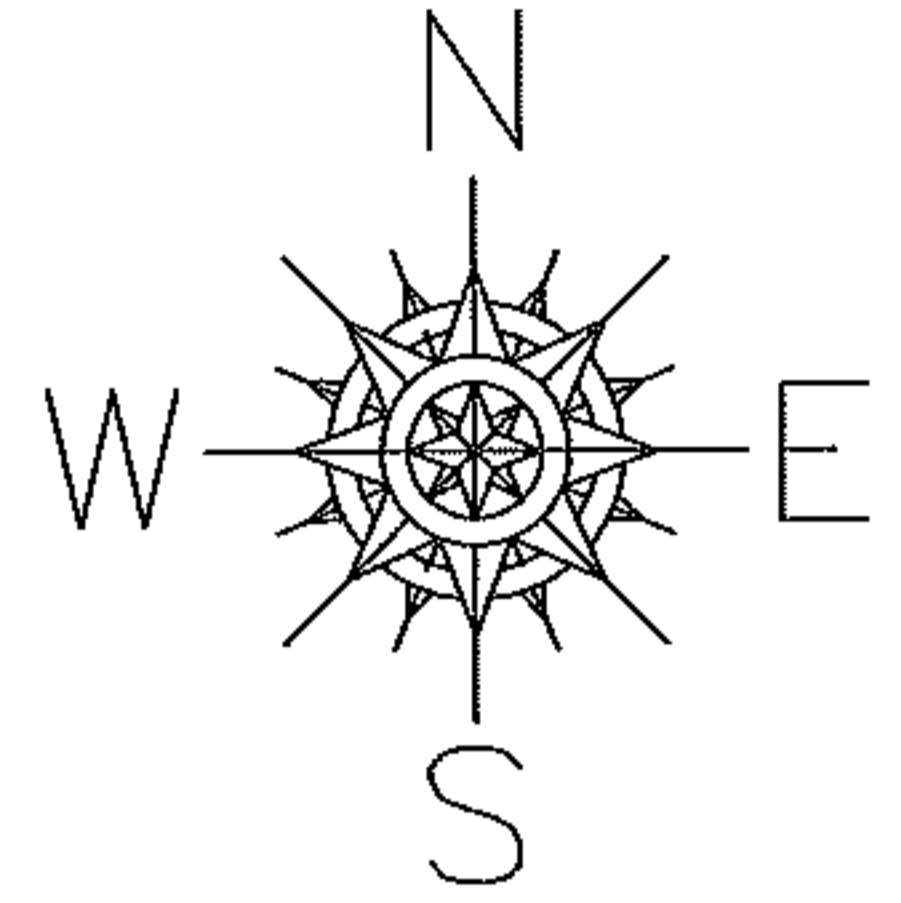


PARENT PARCEL: 02-02-003-101-029

CHILD PARCEL: 02-02-008-107-059, 02-02-003-101-046

STARTING POINT: AT A MON BOX AT THE INTERSECTION OF C/L OF JAEGER RD. AND WEST LINE OF TR.2 O.L.8

12-00279



SPLITS/DEEDS PROCESSED

LORAIN COUNTY TAX MAP DEPARTMENT
226 MIDDLE AVE. ELYRIA, OHIO

SURVEYED BY: TREVOR A. BIXLER

CLOSURE: .01:10,000

MAP PAGE(S): 2-02-008-A&B, 2-02-003

APPROVED BY: RRM DATE: 5-29-12

SCALE: 1"= 200 PRIOR INST.: 20040029258