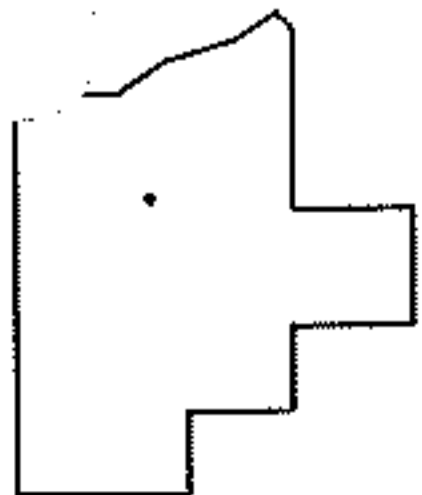
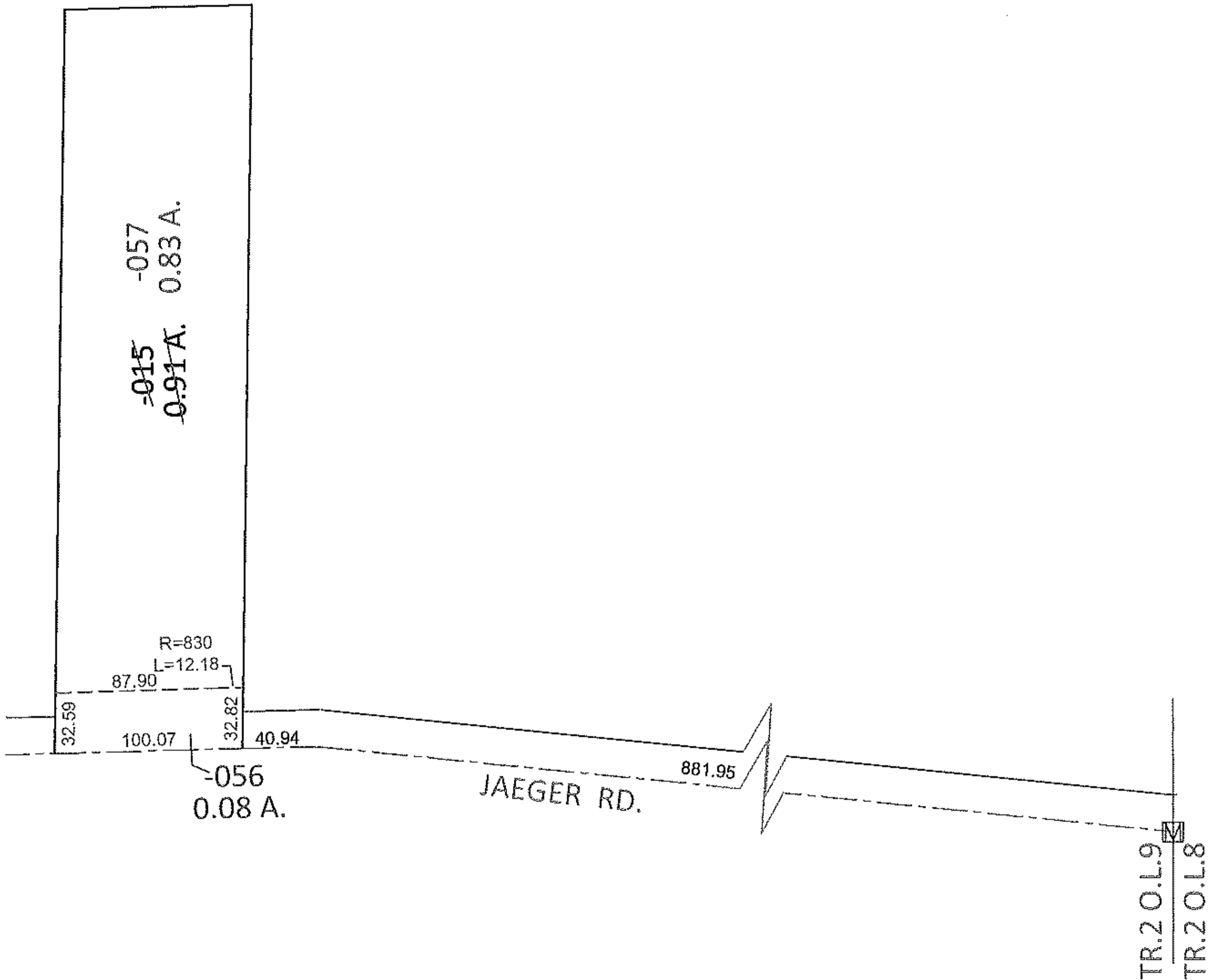
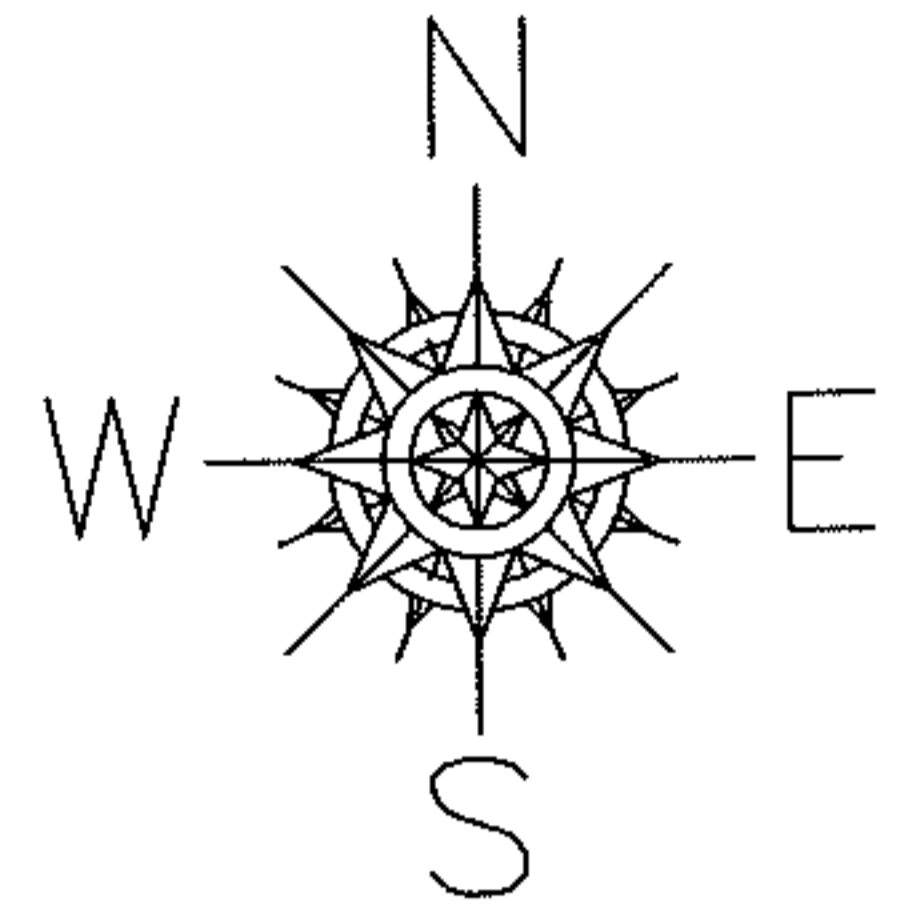


PARENT PARCEL: 02-02-009-101-015

CHILD PARCEL: 02-02-009-101-056, -057

12-00273

STARTING POINT: AT A MON BOX AT THE INTERSECTION OF C/L OF JAEGER RD. AND EAST LINE OF TR. O.L.9



SPLITS/DEEDS PROCESSED

LORAIN COUNTY TAX MAP DEPARTMENT
226 MIDDLE AVE. ELYRIA, OHIO

SURVEYED BY: TREVOR A. BIXLER

CLOSURE: .00:10,000

MAP PAGE(S): 2-02-009-B

APPROVED BY: RRM DATE: 5-2-12

SCALE: 1"=100 PRIOR INST.: 20030948306