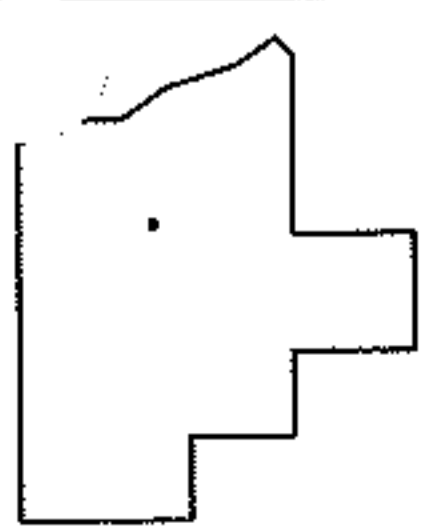
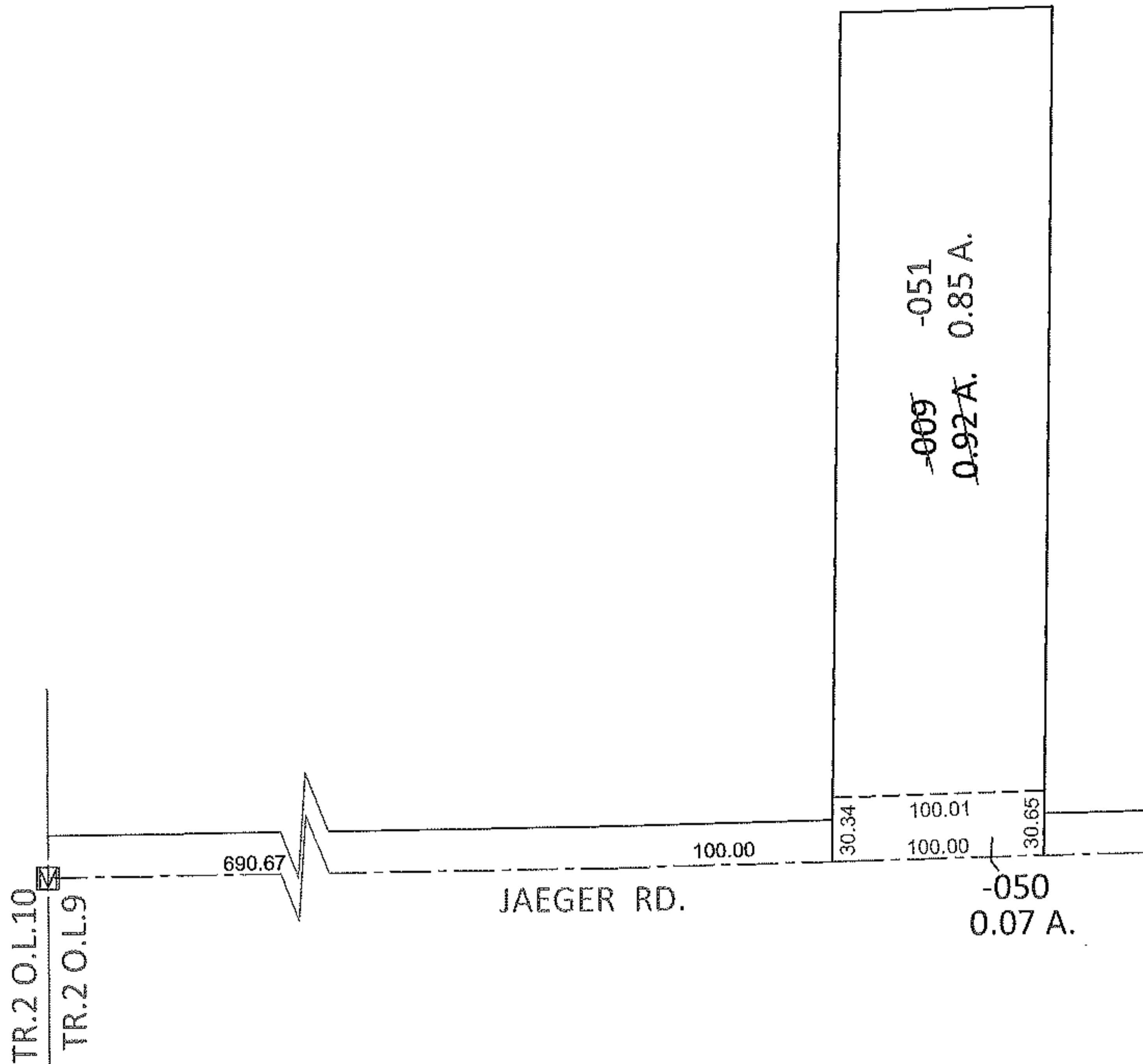
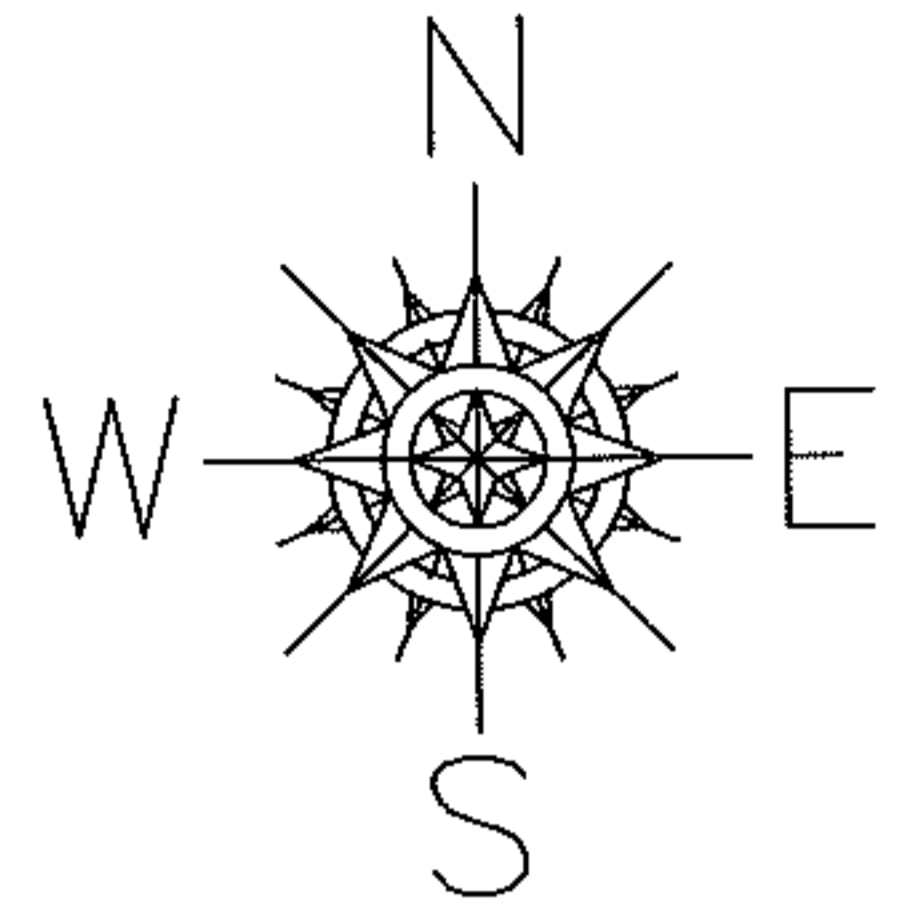


PARENT PARCEL: 02-02-009-101-009

CHILD PARCEL: 02-02-009-101-050, -051

12-00269

STARTING POINT: AT A MON BOX AT THE INTERSECTION OF C/L OF JAEGER RD. AND WEST LINE OF TR.2 O.L.9



SPLITS/DEEDS PROCESSED

LORAIN COUNTY TAX MAP DEPARTMENT  
226 MIDDLE AVE. ELYRIA, OHIO

SURVEYED BY: TREVOR A. BIXLER

CLOSURE: .00:10,000

MAP PAGE(S): 2-02-009-A

APPROVED BY: RRM DATE: 5-2-12

SCALE: 1"= 100 PRIOR INST.: OR 541/735