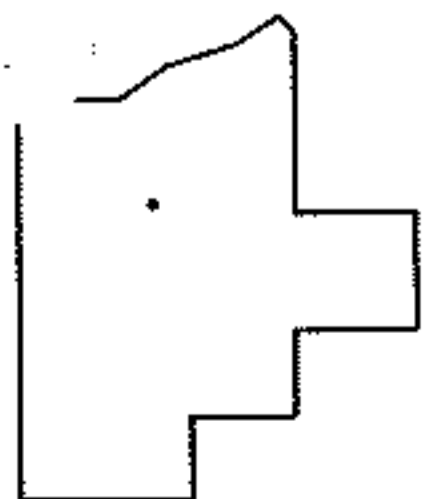
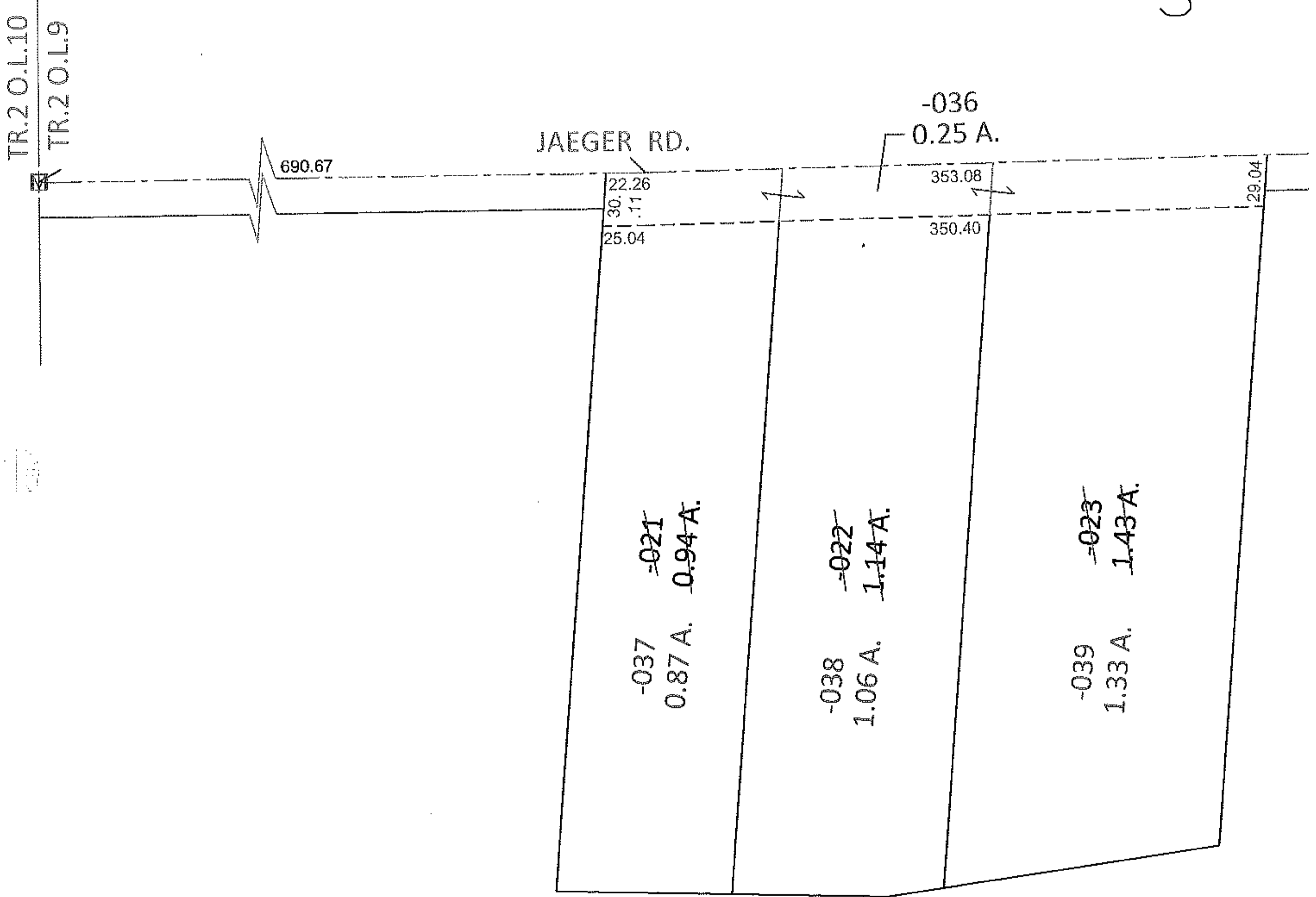
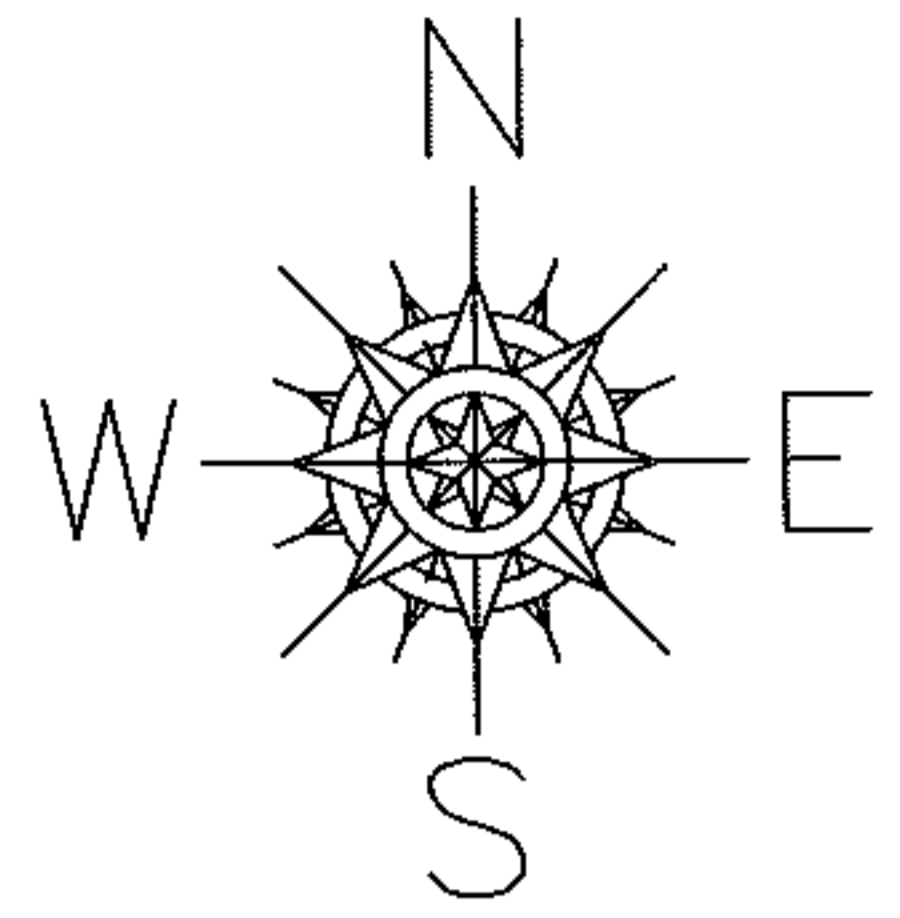


PARENT PARCEL: 02-02-009-102-021 THRU -023

CHILD PARCEL: 02-02-009-102-036 THRU -039

STARTING POINT: AT A MON BOX AT THE INTERSECTION OF C/L OF JAEGER RD. AND WEST LINE OF TR.2 O.L.9

12-00268



SPLITS/DEEDS PROCESSED

LORAIN COUNTY TAX MAP DEPARTMENT
226 MIDDLE AVE. ELYRIA, OHIO

SURVEYED BY: TREVOR A. BIXLER

CLOSURE: .00:10,000

MAP PAGE(S): 2-02-009-A

APPROVED BY: RRM DATE: 5-2-12

SCALE: 1"= 100 PRIOR INST.: 20020837477