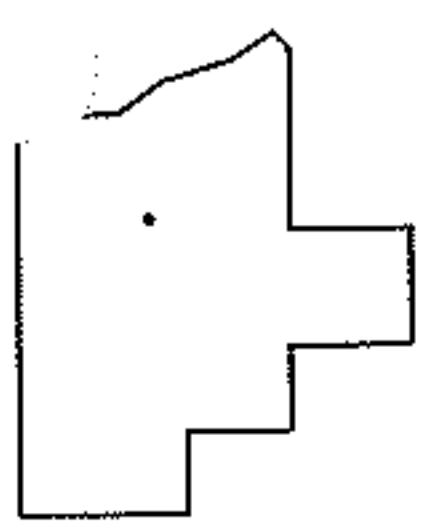
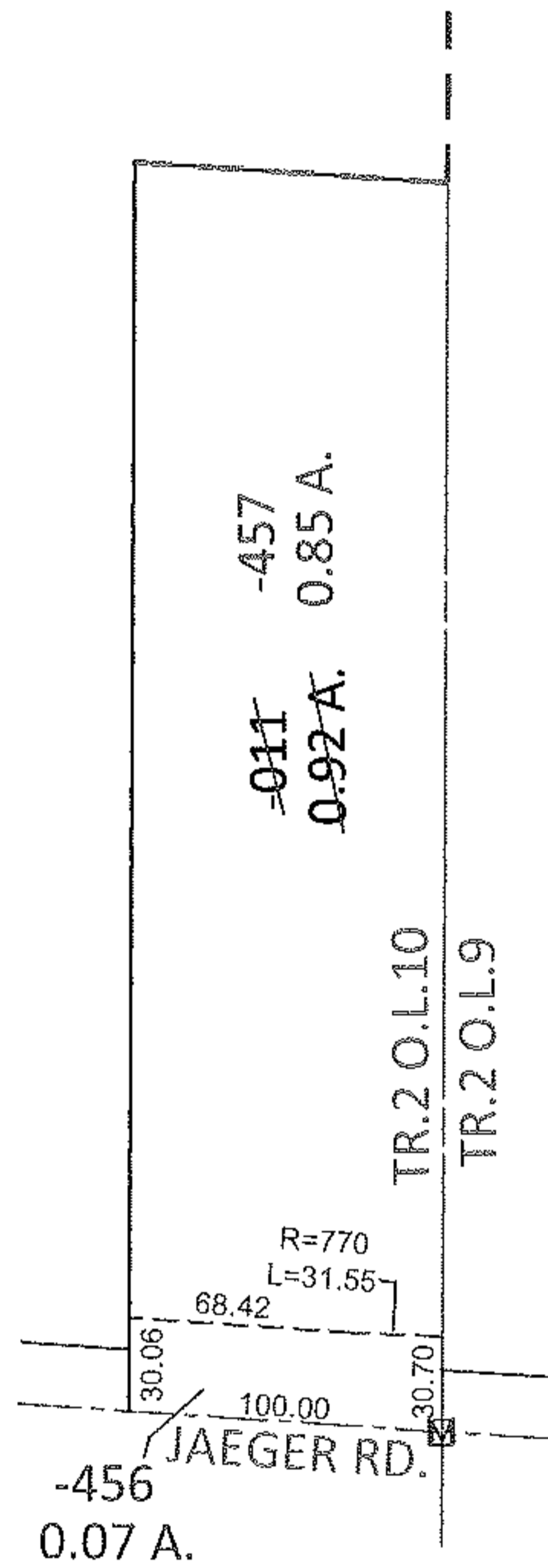
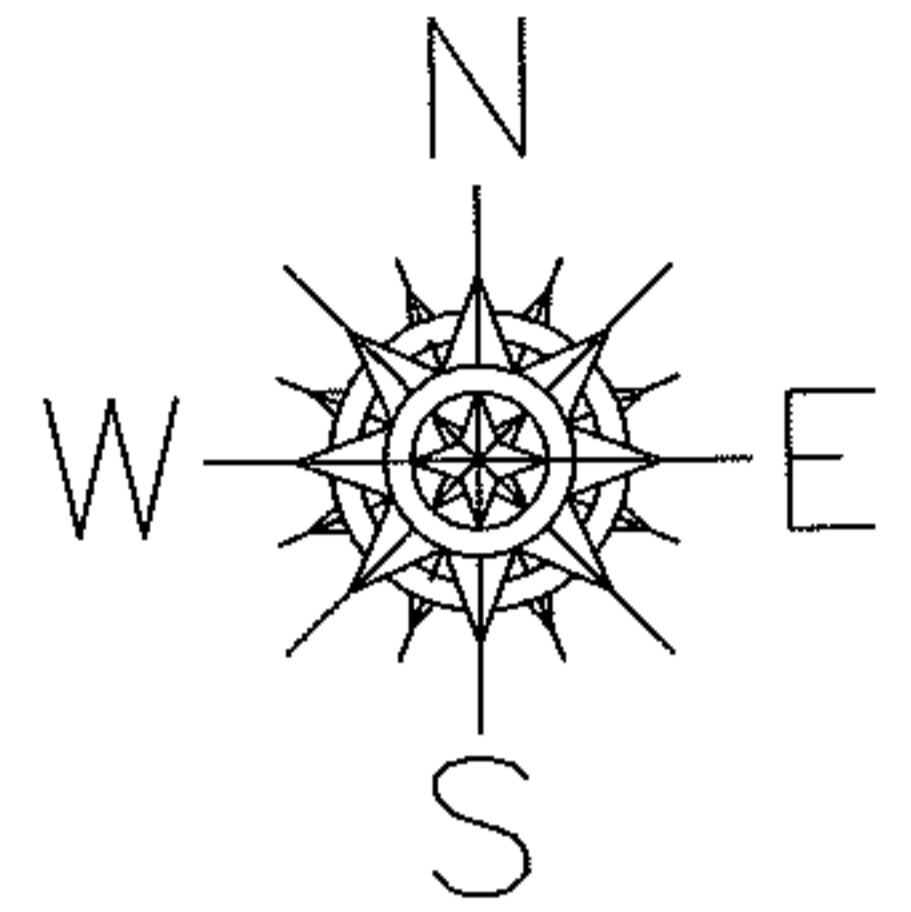


PARENT PARCEL: 02-02-010-000-011

CHILD PARCEL: 02-02-010-000-456, -457

12-00264

STARTING POINT: AT A MON BOX AT THE INTERSECTION OF C/L OF JAEGER RD. AND EAST LINE OF TR.2 O.L.10



SPLITS/DEEDS PROCESSED

LORAIN COUNTY TAX MAP DEPARTMENT
226 MIDDLE AVE. ELYRIA, OHIO

SURVEYED BY: TREVOR A. BIXLER

CLOSURE: .00:10,000

MAP PAGE(S): 2-02-010-B

APPROVED BY: RRM DATE: 5-2-12

SCALE: 1"= 100 PRIOR INST.: DV 1393/625