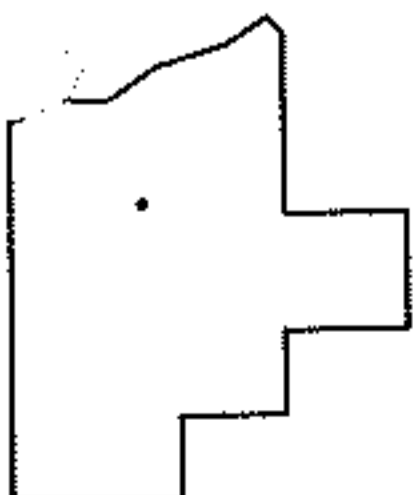
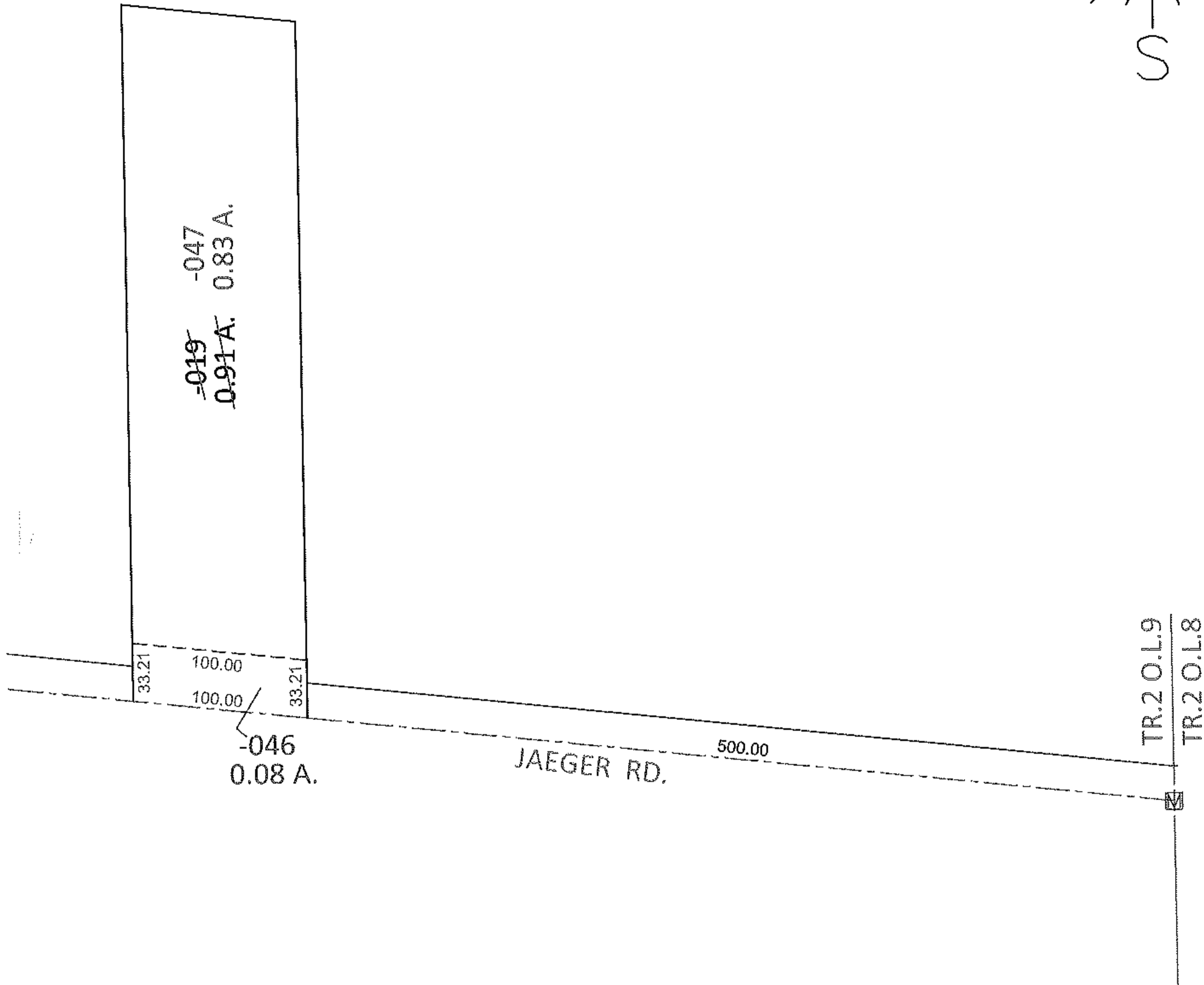
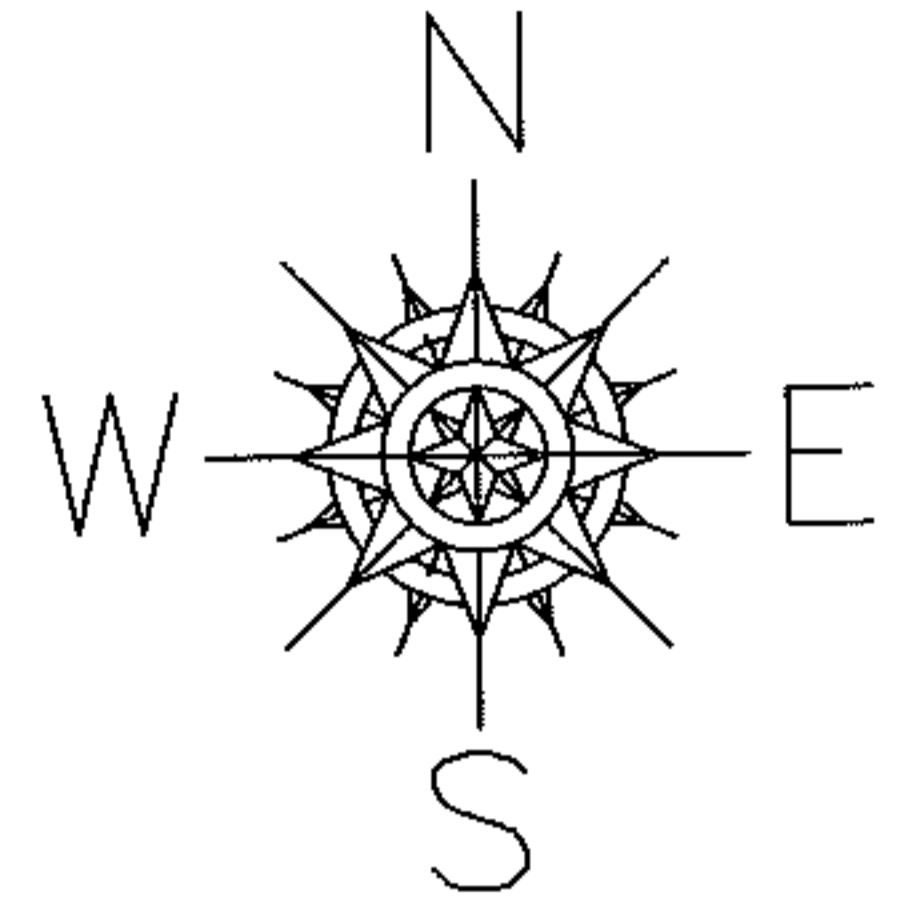


PARENT PARCEL: 02-02-009-101-019

CHILD PARCEL: 02-02-009-101-046, -047

12-00260

STARTING POINT: AT A MON BOX AT THE INTERSECTION OF C/L OF JAEGER RD. AND EAST LINE OF TR. 2 O.L.9



SPLITS/DEEDS PROCESSED

LORAIN COUNTY TAX MAP DEPARTMENT
226 MIDDLE AVE. ELYRIA, OHIO

SURVEYED BY: TREVOR A. BIXLER

CLOSURE: .00:10,000

MAP PAGE(S): 2-02-009-B

APPROVED BY: RRM DATE: 5-1-12

SCALE: 1"= 100 PRIOR INST.: 20040045186