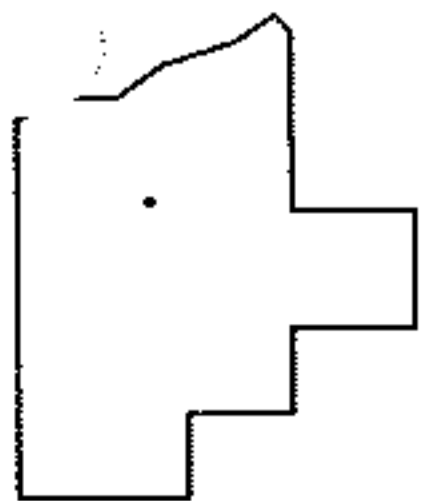
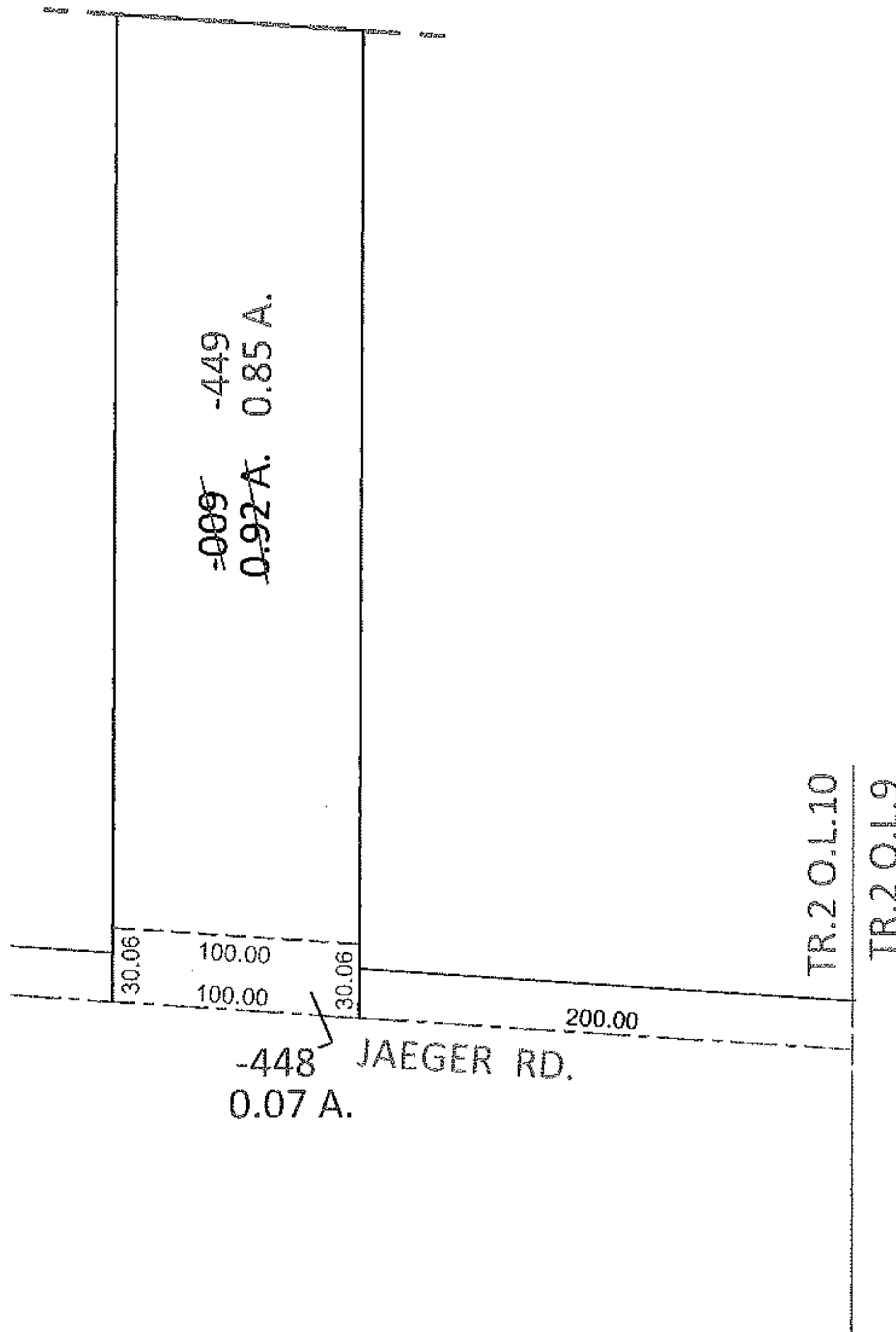
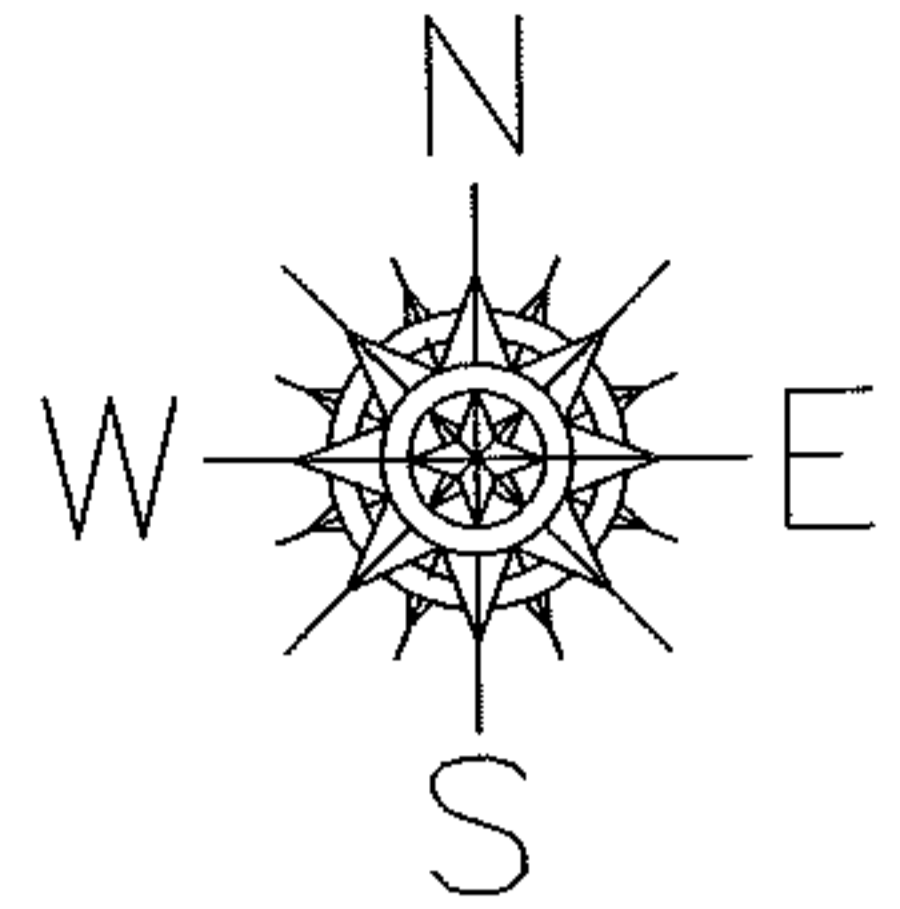


PARENT PARCEL: 02-02-010-000-009

CHILD PARCEL: 02-02-010-000-448, -449

STARTING POINT: INTERSECTION OF C/L OF JAEGER RD. AND EAST LINE OF TR.2 O.L.10

12-00259



SPLITS/DEEDS PROCESSED

LORAIN COUNTY TAX MAP DEPARTMENT
226 MIDDLE AVE. ELYRIA, OHIO

SURVEYED BY: TREVOR A. BIXLER

CLOSURE: .00:10,000

MAP PAGE(S): 2-02-010-B

APPROVED BY: RRM DATE: 5-1-12

SCALE: 1"= 100 PRIOR INST.: DV 1427/239