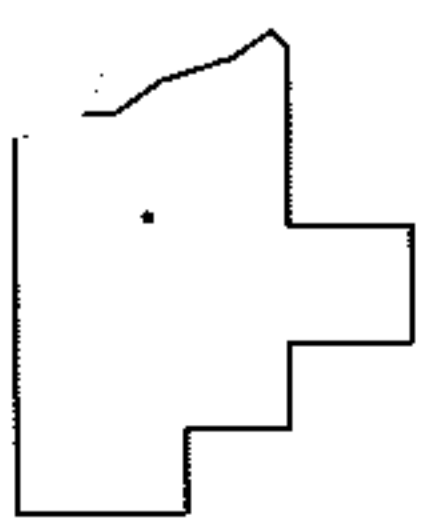
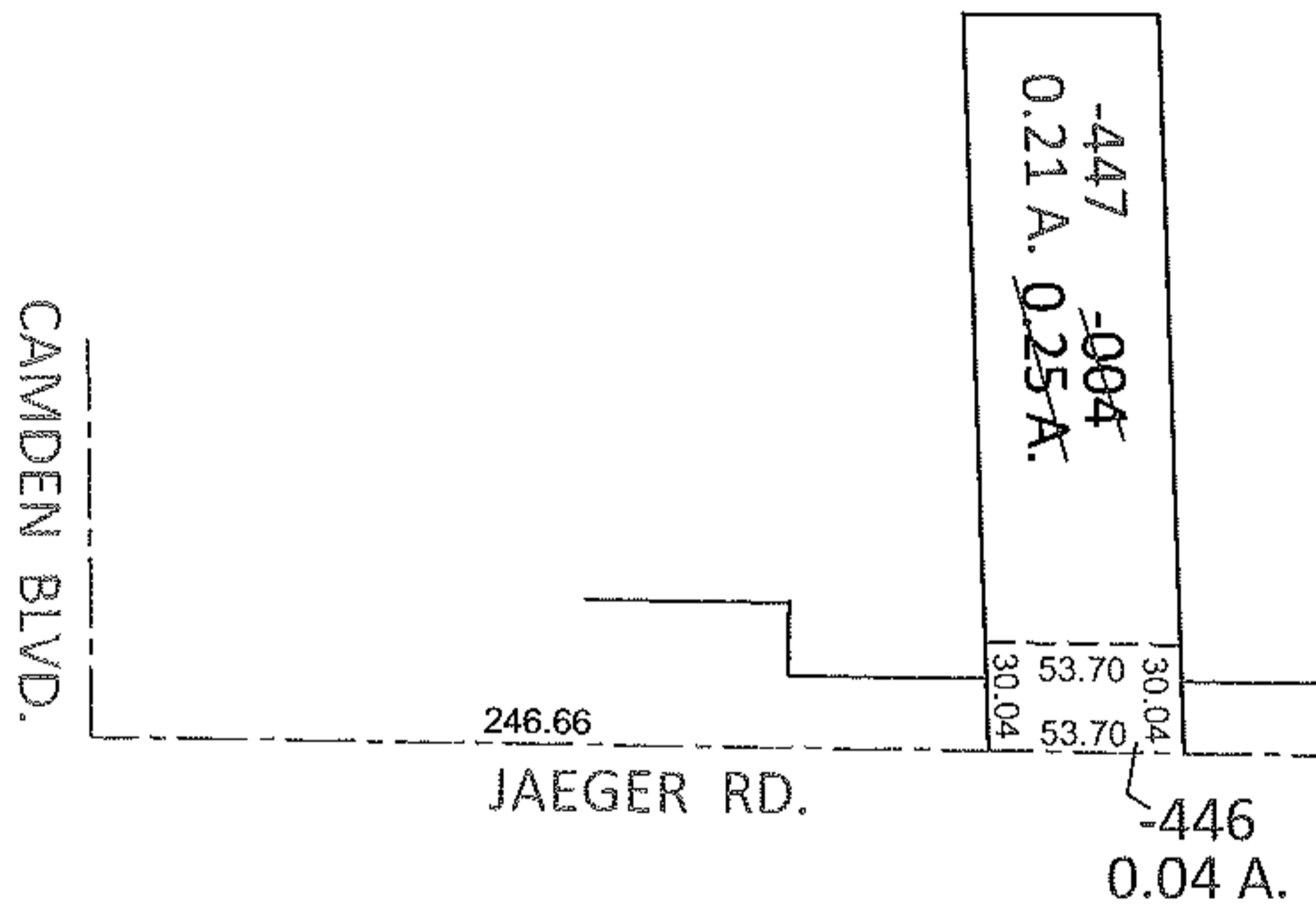
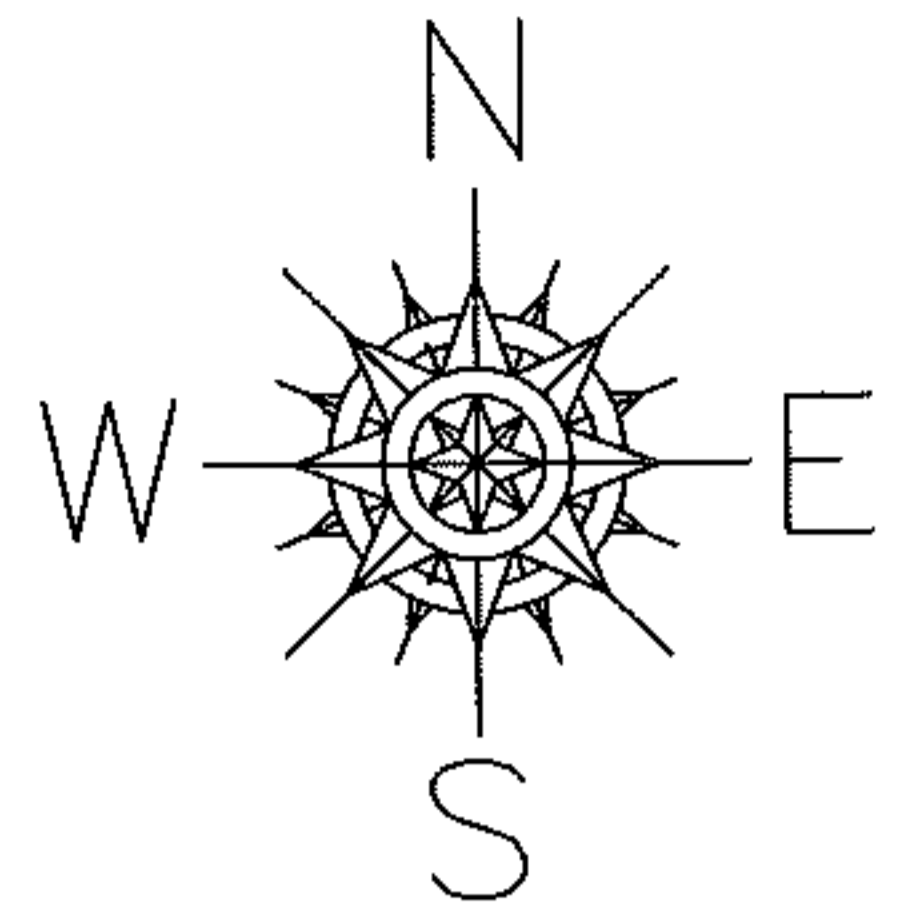


PARENT PARCEL: 02-02-010-000-004

CHILD PARCEL: 02-02-010-000-446, -447

STARTING POINT: INTERSECTION OF C/L OF JAEGER RD. AND C/L OF CAMDEN BLVD.

12-00258



SPLITS/DEEDS PROCESSED

LORAIN COUNTY TAX MAP DEPARTMENT
226 MIDDLE AVE. ELYRIA, OHIO

SURVEYED BY: TREVOR A. BIXLER

CLOSURE: .00:10,000

MAP PAGE(S): 2-02-010-A

APPROVED BY: RRM DATE: 4-30-12

SCALE: 1" = 100 PRIOR INST.: 20050062434