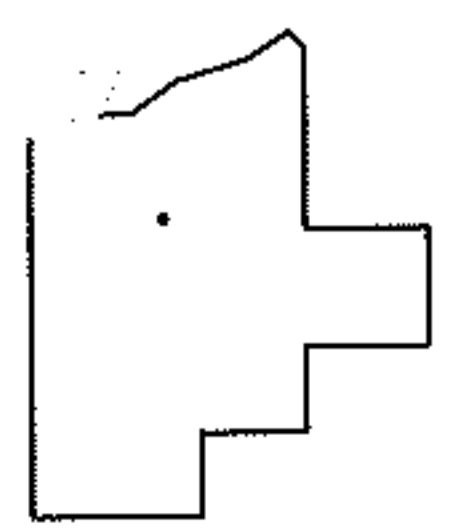
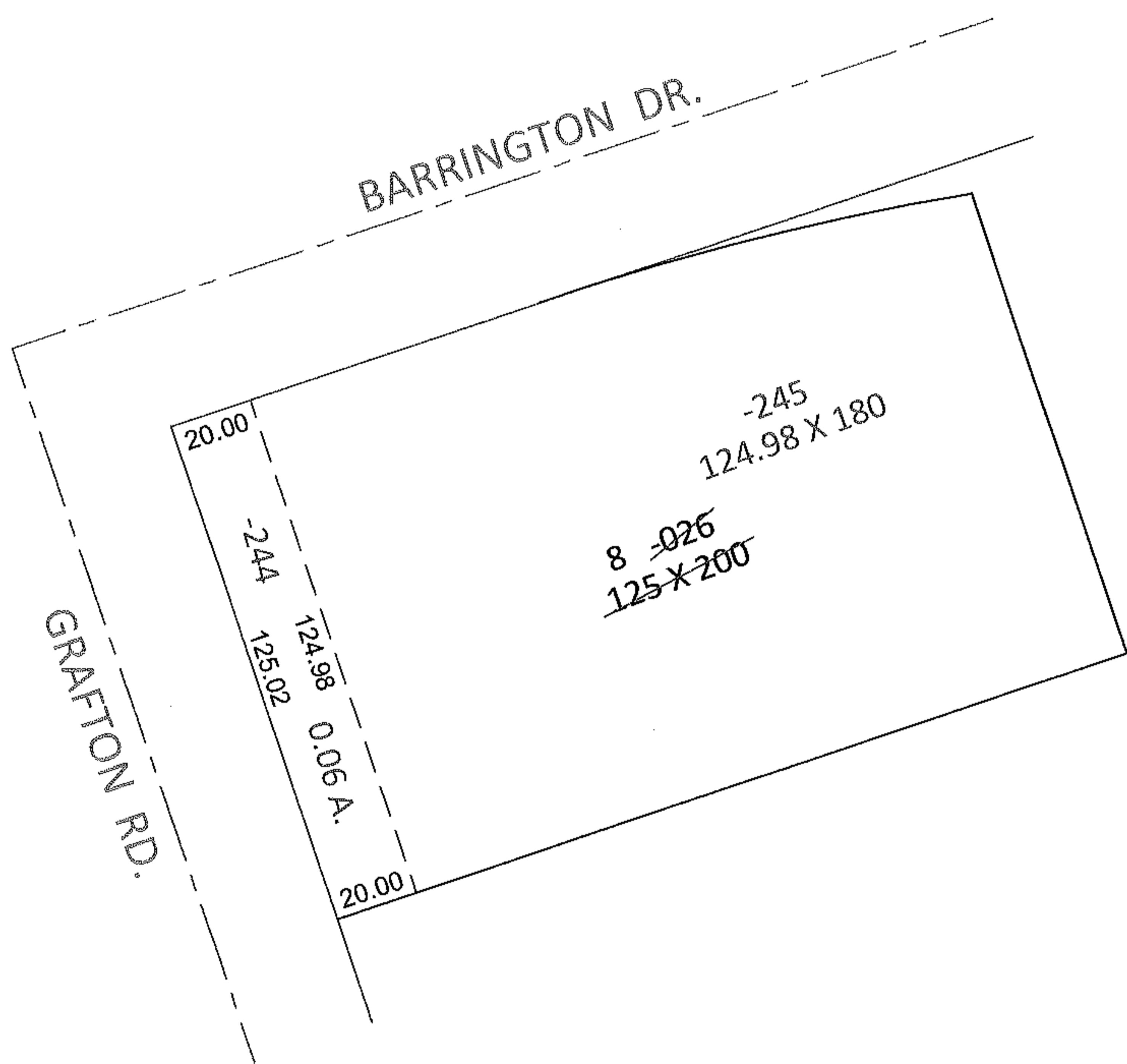
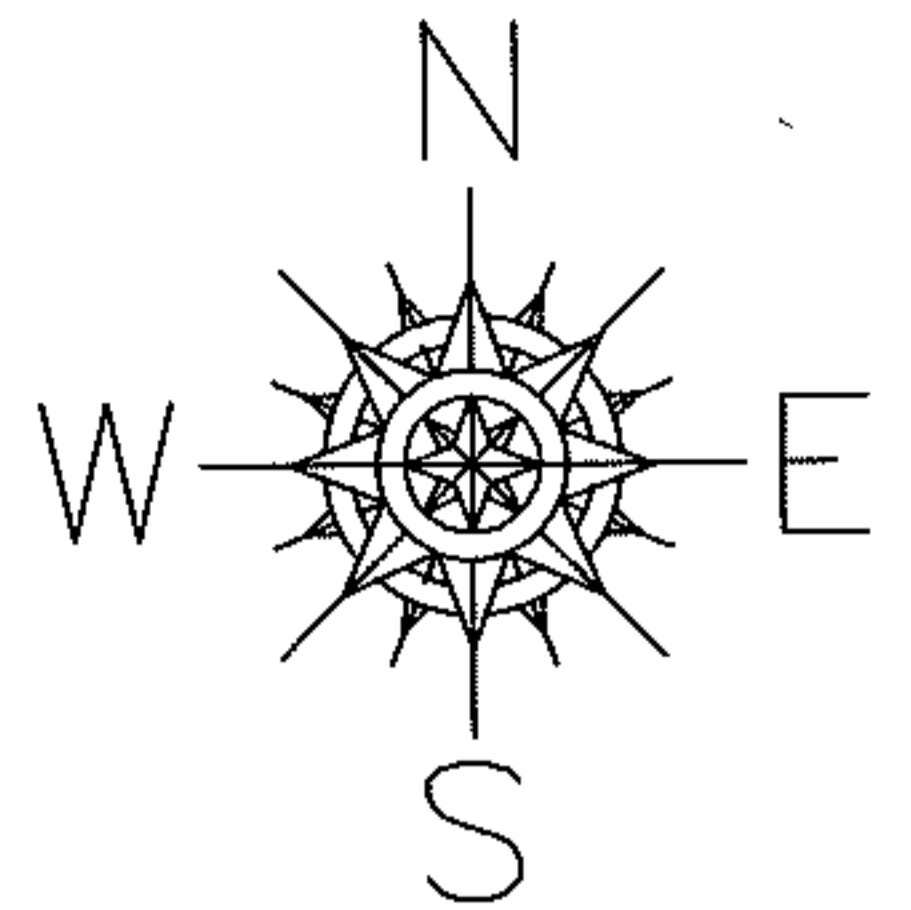


PARENT PARCEL: 11-00-098-000-026
CHILD PARCEL: 11-00-098-000-244, -245
STARTING POINT: NORTHWEST CORNER OF S/L 8 IN C.A. MILLER SUB. (VOL.17 PG.13A)

12-00254



SPLITS/DEEDS PROCESSED
LORAIN COUNTY TAX MAP DEPARTMENT
226 MIDDLE AVE. ELYRIA, OHIO

SURVEYED BY: KENNETH C. DEAN JR.
CLOSURE: .00:10,000
MAP PAGE(S): 11-00-098-A
APPROVED BY: RRM DATE: 4-5-12
SCALE: 1"= 50' PRIOR INST.: DV 1354/631