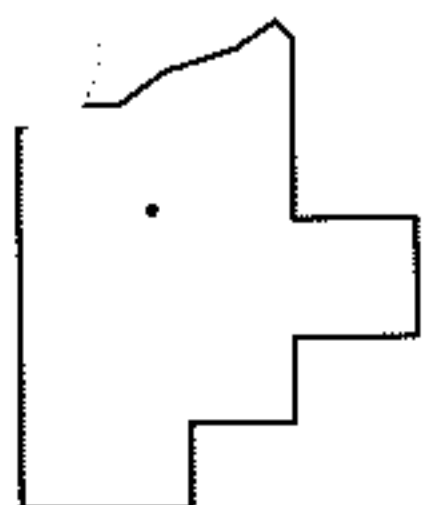
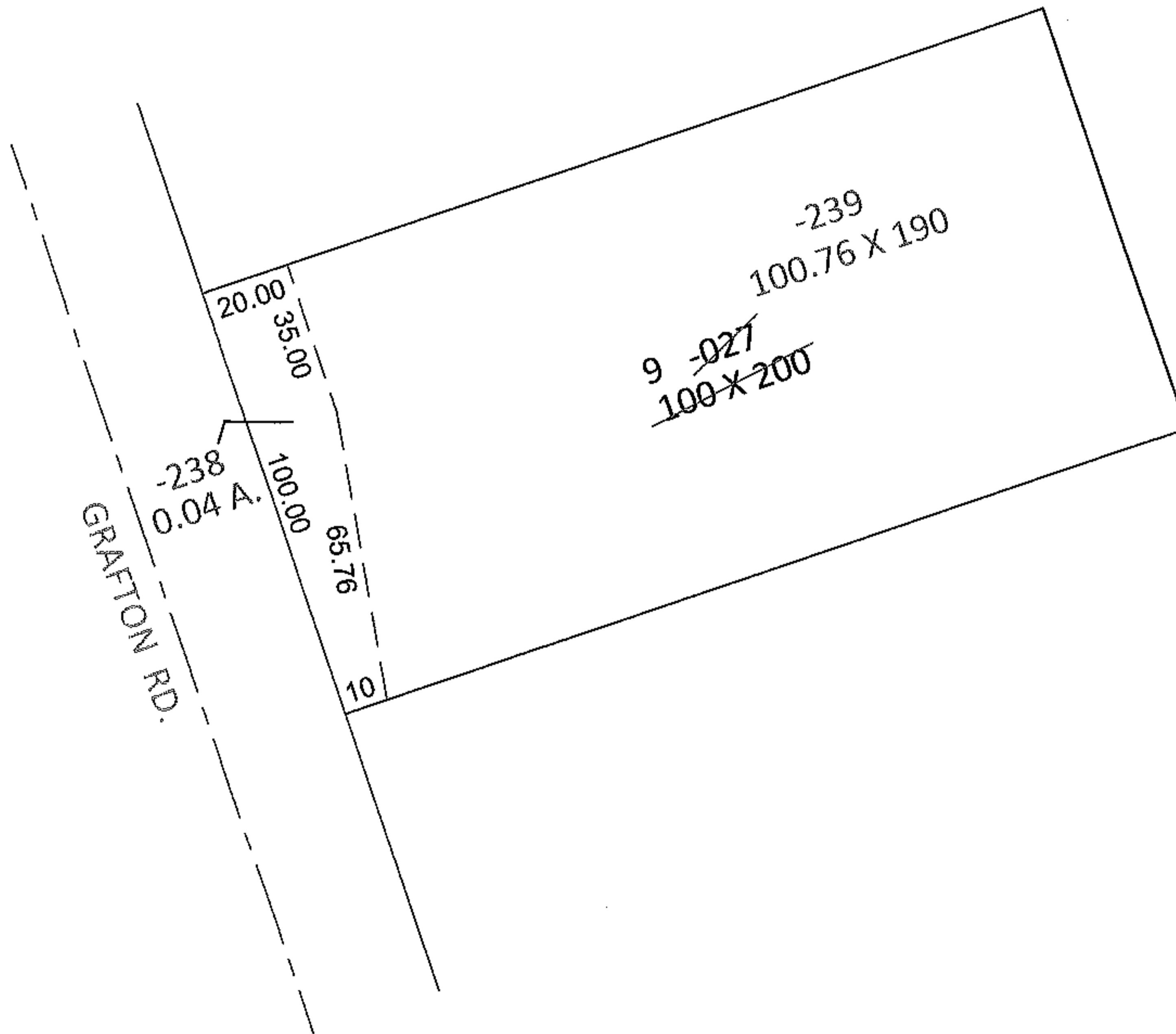
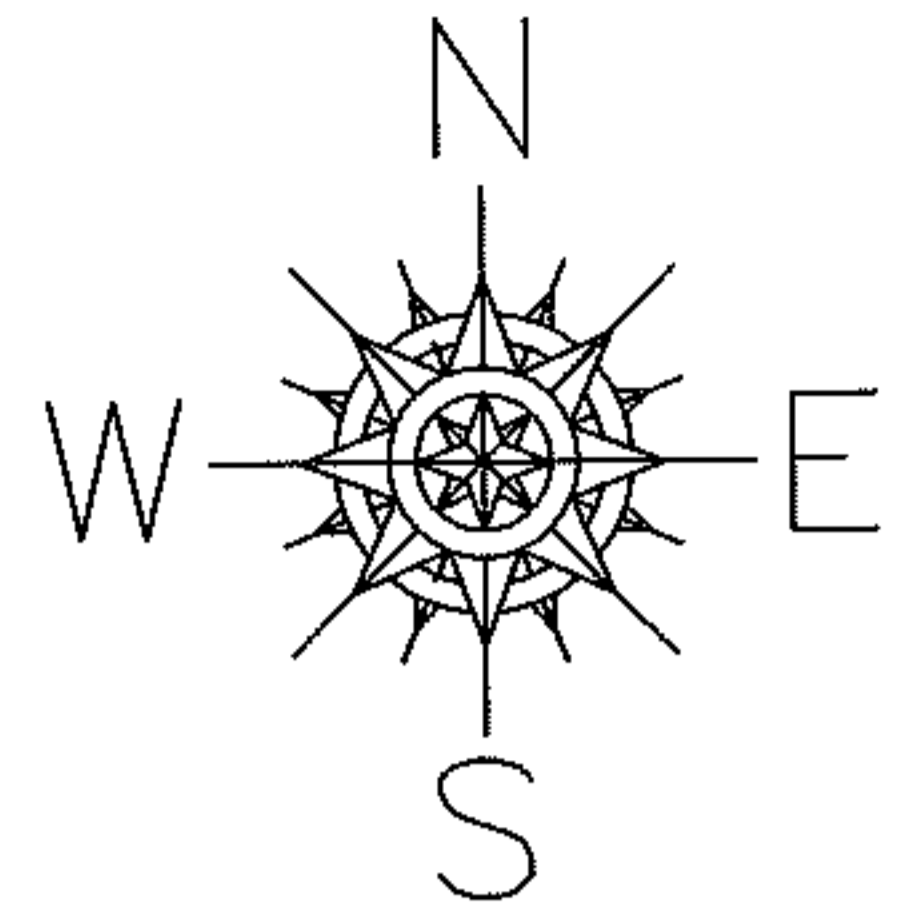


PARENT PARCEL: 11-00-098-000-027

CHILD PARCEL: 11-00-098-000-238, -239

STARTING POINT: NORTHWEST CORNER OF S/L 9 IN C.A. MILLER SUB. (VOL.17 PG. 13A)

12-00252



SPLITS/DEEDS PROCESSED

LORAIN COUNTY TAX MAP DEPARTMENT
226 MIDDLE AVE. ELYRIA, OHIO

SURVEYED BY: KENNETH C DEAN JR.

CLOSURE: .01:10,000

MAP PAGE(S): 11-00-098-A

APPROVED BY: RRM DATE: 4-5-12

SCALE: 1"= 50' PRIOR INST.: 20010785960