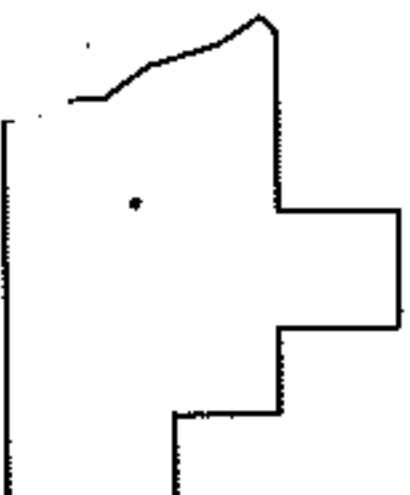
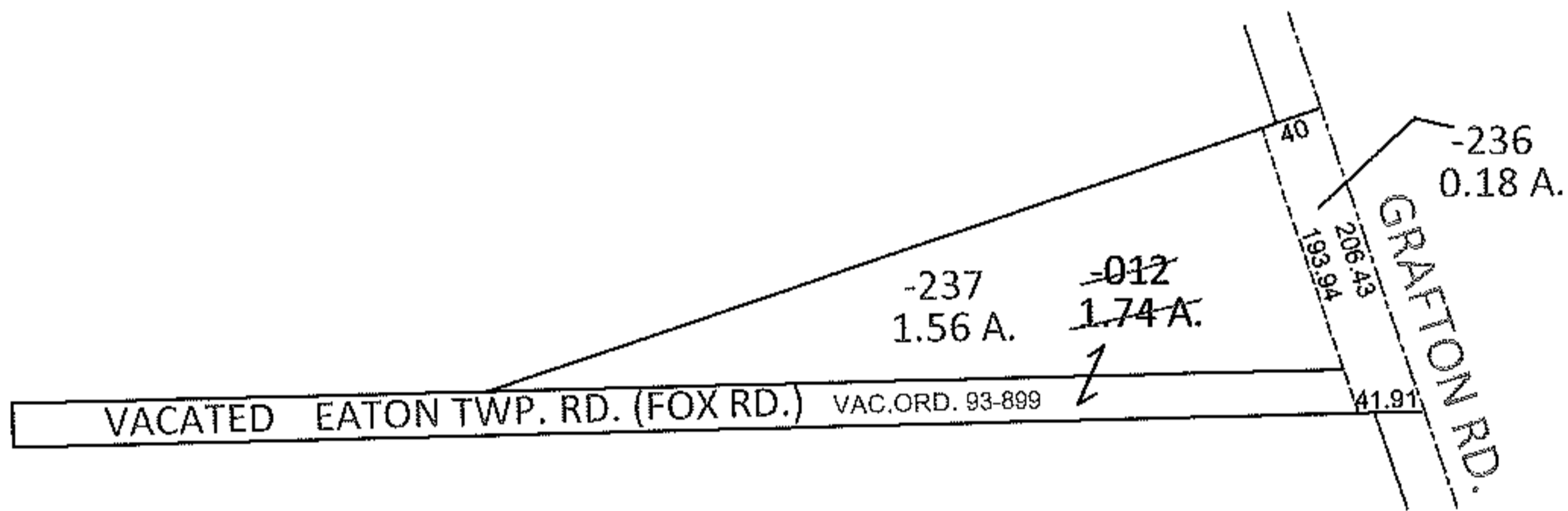
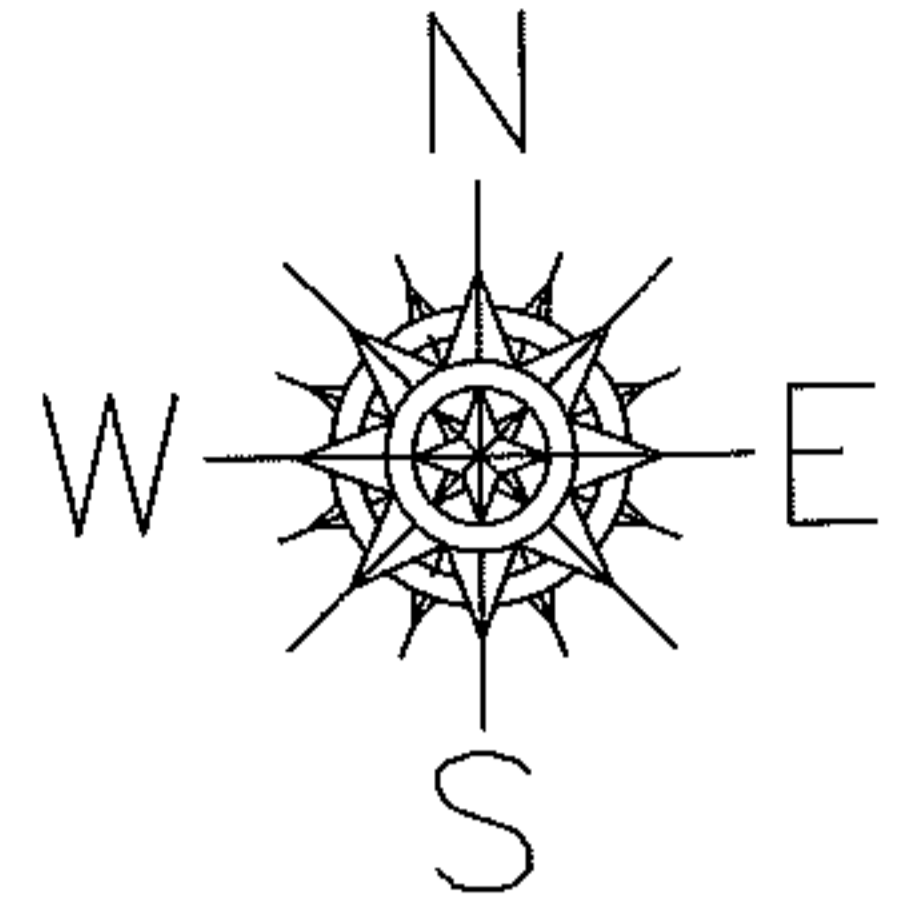


PARENT PARCEL: 11-00-098-000-012

CHILD PARCEL: 11-00-098-000-236, -237

STARTING POINT: INTERSECTION OF C/L OF GRAFTON RD. WITH SOUTH LINE OF VACATED FOX RD.

12-00251



SPLITS/DEEDS PROCESSED

LORAIN COUNTY TAX MAP DEPARTMENT
226 MIDDLE AVE. ELYRIA, OHIO

SURVEYED BY: KENNETH C. DEAN JR.

CLOSURE: .01:10,000

MAP PAGE(S): 11-00-098-A

APPROVED BY: RRM DATE: 4-5-12

SCALE: 1"= 200 PRIOR INST.: OR 1053/233