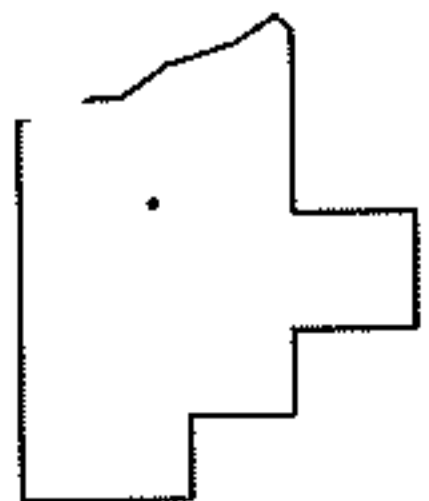
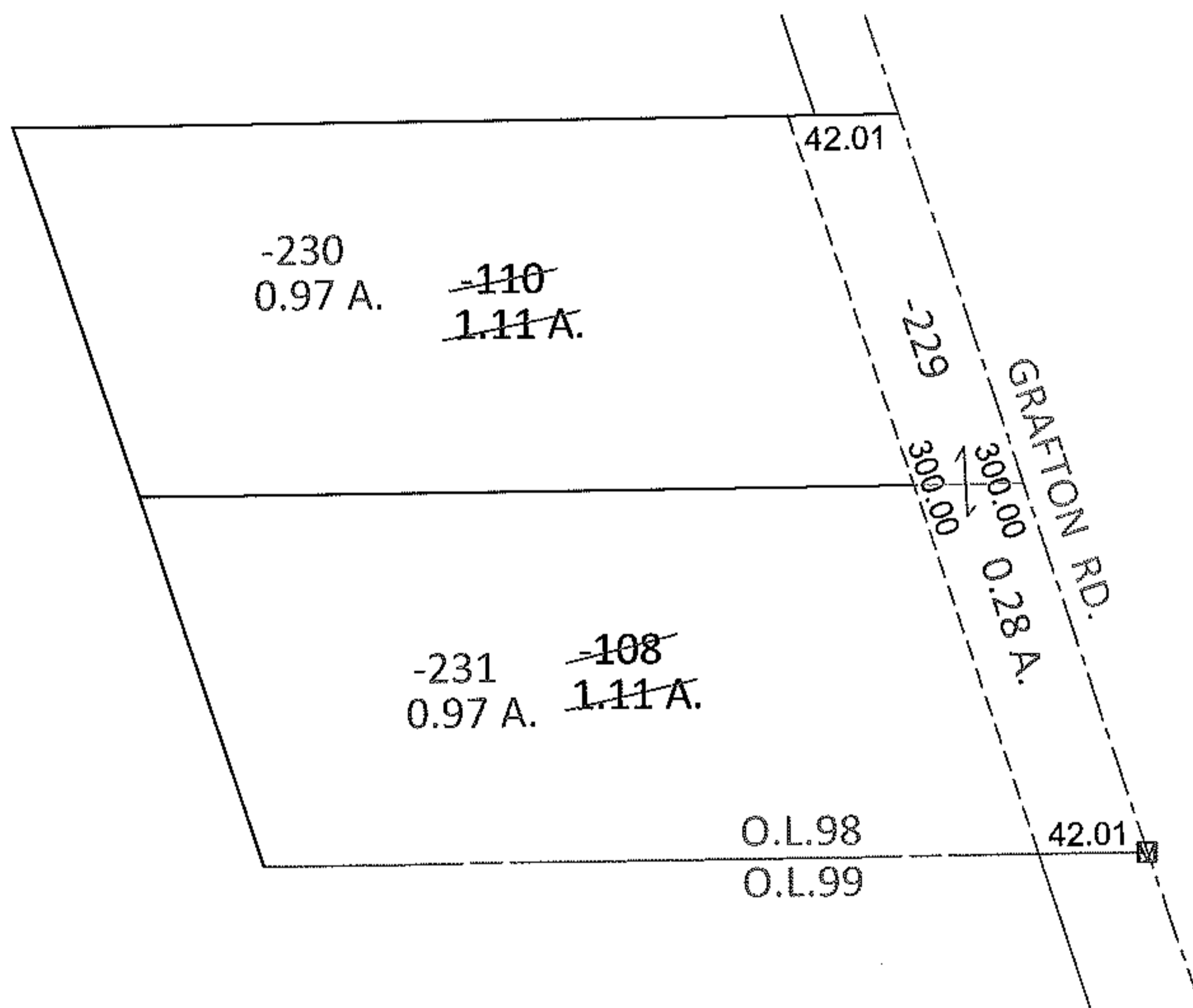
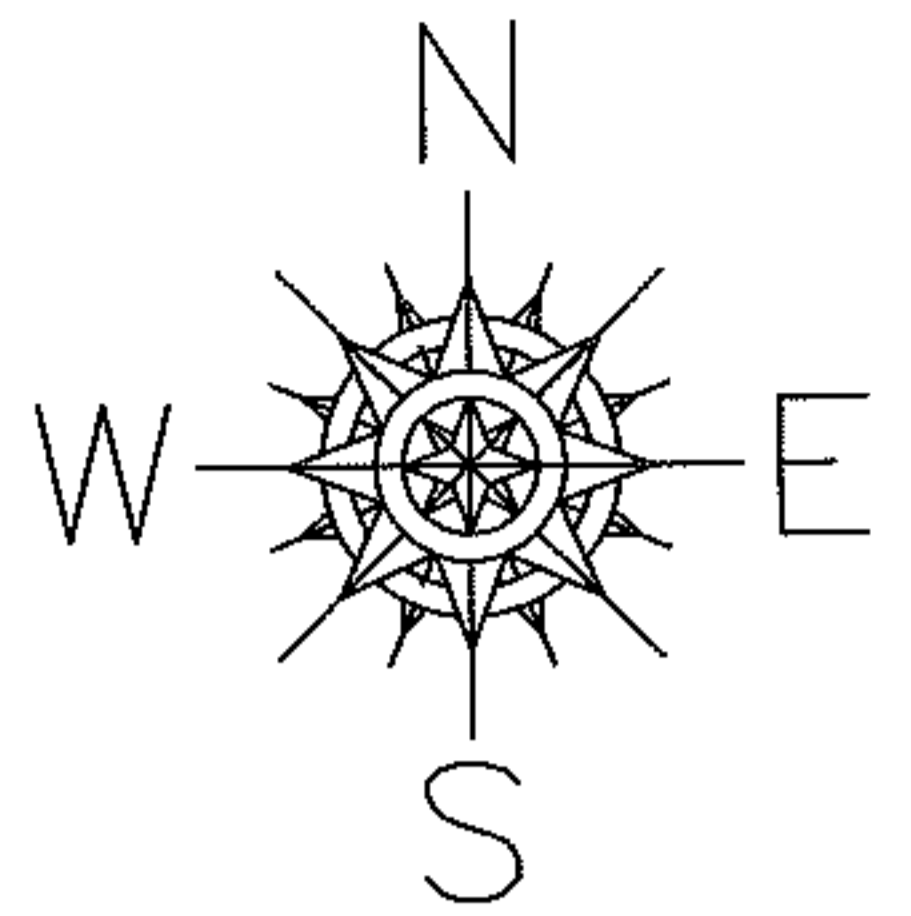


PARENT PARCEL: 11-00-098-000-108, -110
CHILD PARCEL: 11-00-098-000-229, -230, -231
STARTING POINT: INTERSECTION OF C/L OF GRAFTON RD. AND SOUTH LINE OF O.L.98

12-00248



SPLITS/DEEDS PROCESSED
LORAIN COUNTY TAX MAP DEPARTMENT
226 MIDDLE AVE. ELYRIA, OHIO

SURVEYED BY: KENNETH C. DEAN JR.
CLOSURE: .00:10,000
MAP PAGE(S): 11-00-098-A
APPROVED BY: RRM DATE: 4-4-12
SCALE: 1"= 100 PRIOR INST.: 20030921682