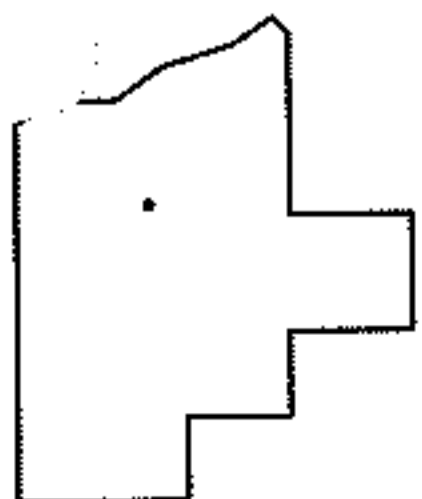
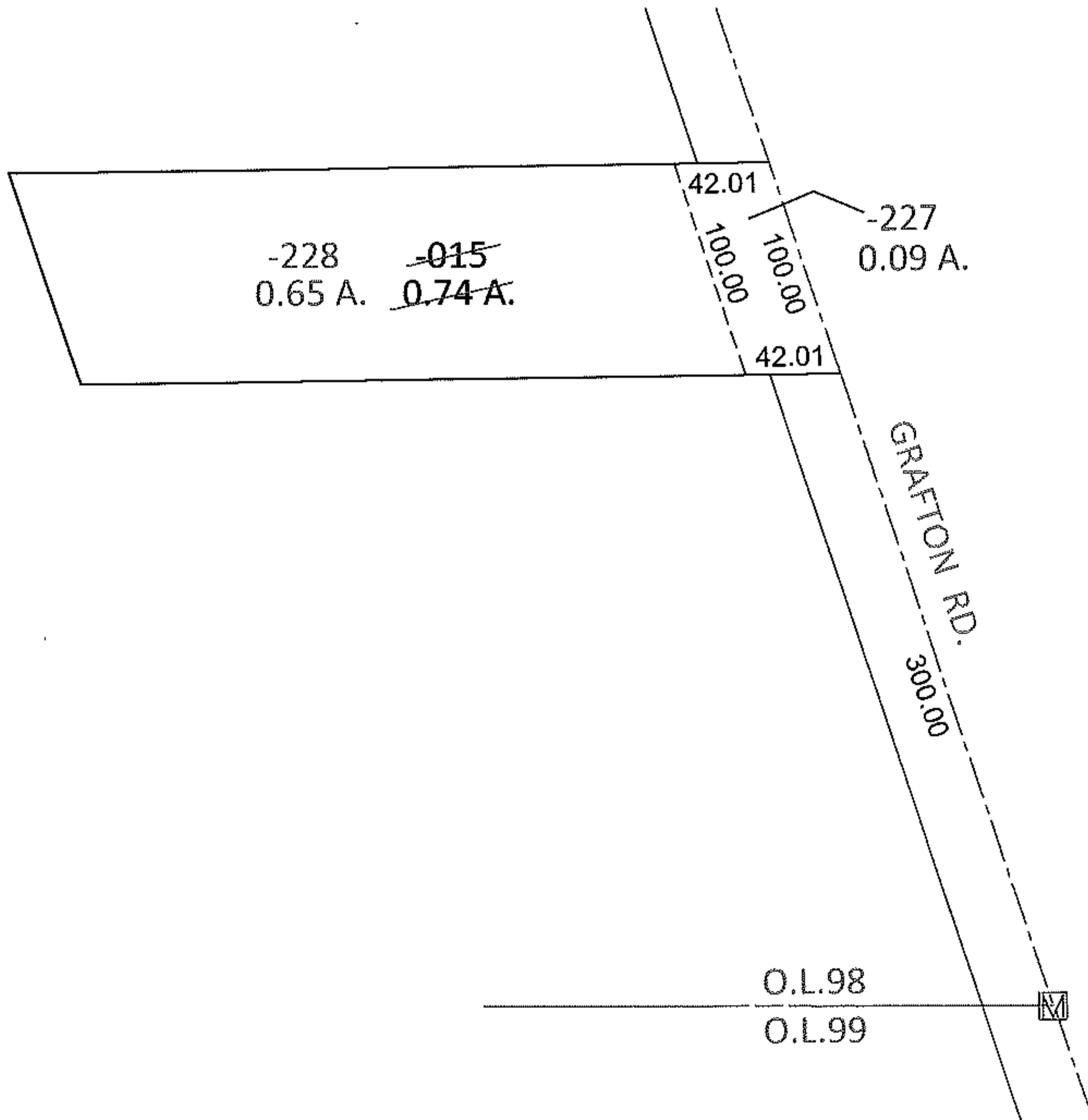
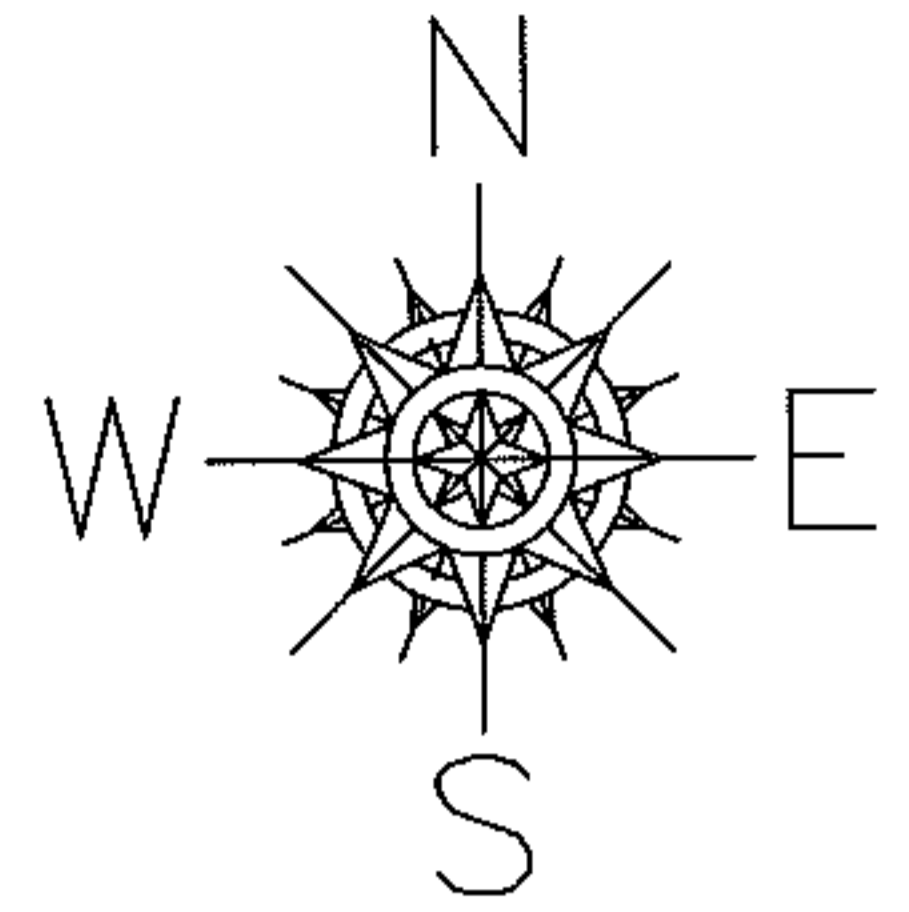


PARENT PARCEL: 11-00-098-000-015

CHILD PARCEL: 11-00-098-000-227, -228

STARTING POINT: INTERSECTION OF C/L OF GRAFTON RD. AND SOUTH LINE OF O.L.98

12-00247



SPLITS/DEEDS PROCESSED

LORAIN COUNTY TAX MAP DEPARTMENT
226 MIDDLE AVE. ELYRIA, OHIO

SURVEYED BY: KENNETH C. DEAN JR.

CLOSURE: .00:10,000

MAP PAGE(S): 11-00-098-A

APPROVED BY: RRM DATE: 4-4-12

SCALE: 1"= 100 PRIOR INST.: DV 566/258