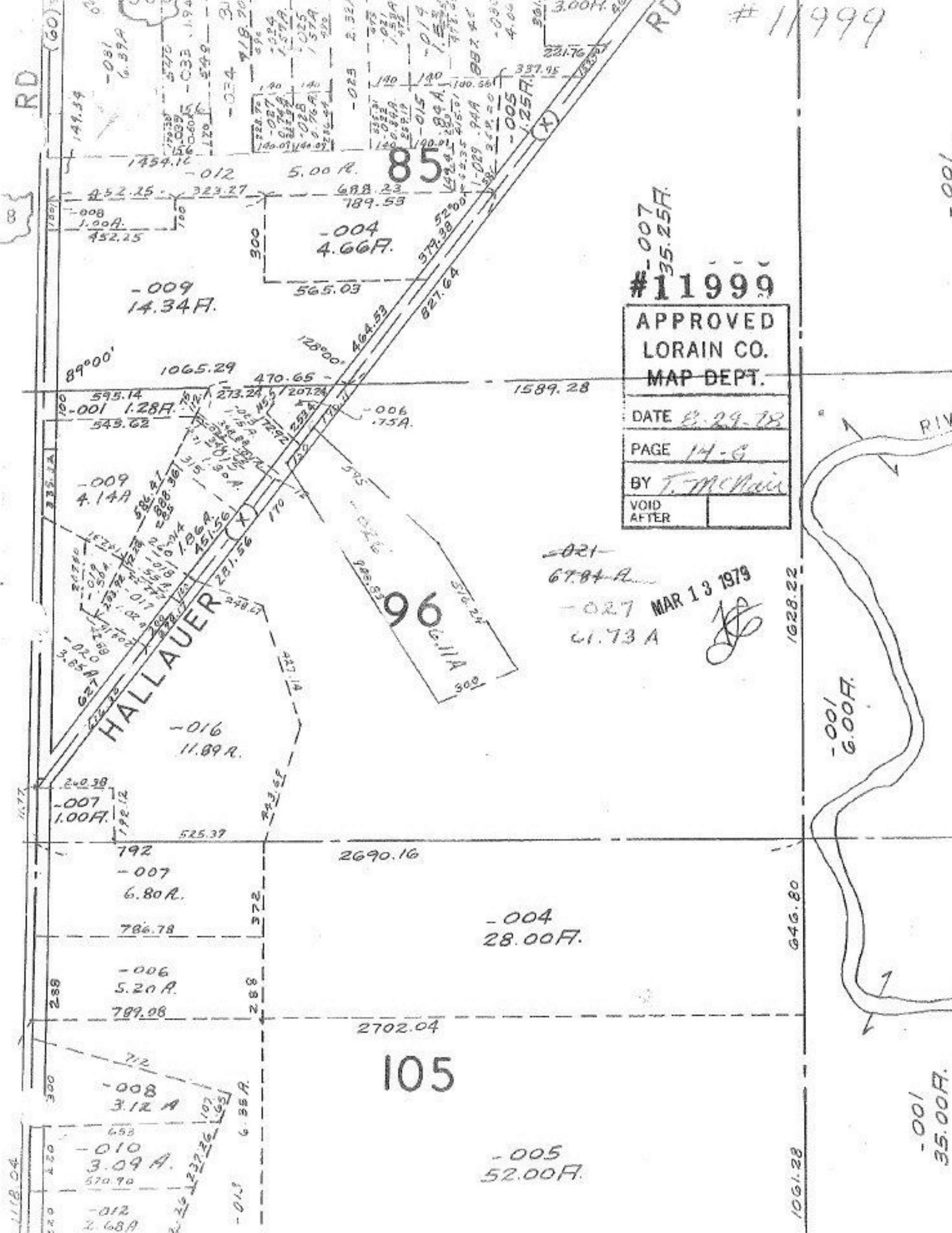


# 11999

# 11999  
 APPROVED  
 LORAIN CO.  
 MAP DEPT.  
 DATE 3-29-78  
 PAGE 14-G  
 BY T. McNeil  
 VOID AFTER

-021  
 67.84 A  
 -027 MAR 13 1979  
 61.73 A



HALLAUER

96

105

-001  
 6.00F.

-001  
 35.00F.

-001

RD

RD

RIV

118.04

1628.22

646.80

1061.28

(60)

100

100

100

300

200

300

300

300

372

288

300

200

85

96

105

#-007  
 135.25F.

#11999

APPROVED  
 LORAIN CO.  
 MAP DEPT.

DATE 3-29-78

PAGE 14-G

BY T. McNeil

VOID AFTER

-021

67.84 A

-027

MAR 13 1979

61.73 A

*[Signature]*

-009  
 14.34F.

-009  
 4.14A

-016  
 11.89A.

-007  
 1.00F.

-007  
 6.80A.

-006  
 5.20A.

-006  
 5.20A.

-006  
 5.20A.

-008  
 3.12A

-010  
 3.09A.

-012  
 2.68A

-004  
 4.66F.

-006  
 .75A.

96  
 66.11A

-007  
 6.80A.

-004  
 28.00F.

-006  
 5.20A.

-008  
 3.12A

-010  
 3.09A.

-012  
 2.68A

-005  
 52.00F.

-001  
 6.00F.

-001  
 35.00F.

-001