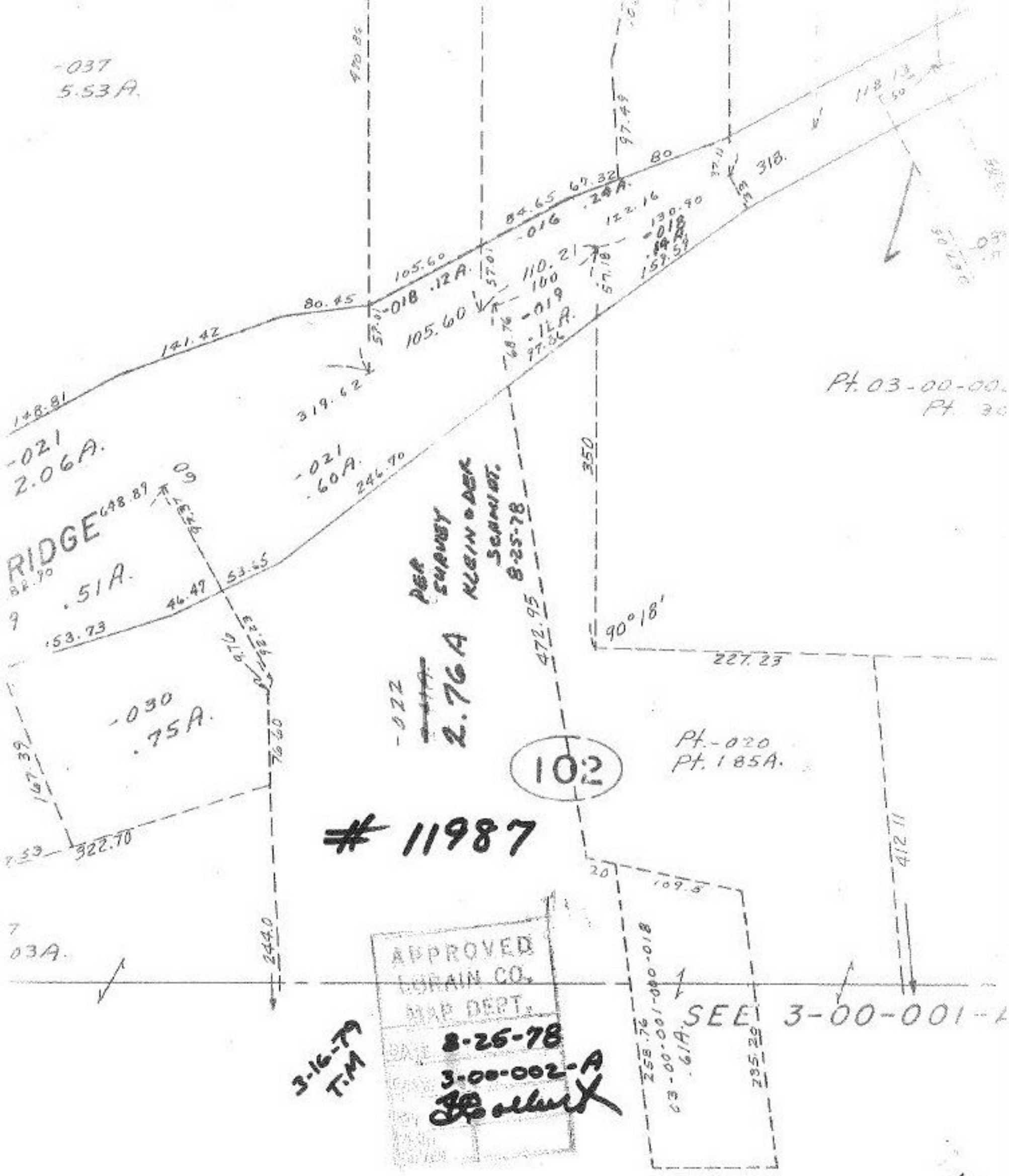


-037  
5.53A.



Pt. 03-00-00.  
Pt. 30

-021  
2.06A.

RIDGE  
51A.

-030  
75A.

-022  
2.76A  
PER SURVEY  
KLEIN & DEK  
SCAMMEL.  
8-25-78

102

Pt. -020  
Pt. 185A.

# 11987

APPROVED  
LORAIN CO.  
MAP DEPT.  
DATE 8-26-78  
CASE 3-00-002-A  
J.B. O'Neil

3-16-79  
T.M.

SEE 3-00-001-1

FFIELD TWR.

100'

