

R.D.

I.S. 1110

#11982

APPROVED	
LORAIN CO.	
MAP DEPT.	
DATE	8-25-78
PAGE	11-14
BY	T. McNamee
VOID	
DEFIED	

MAR 21 1979

[Signature]

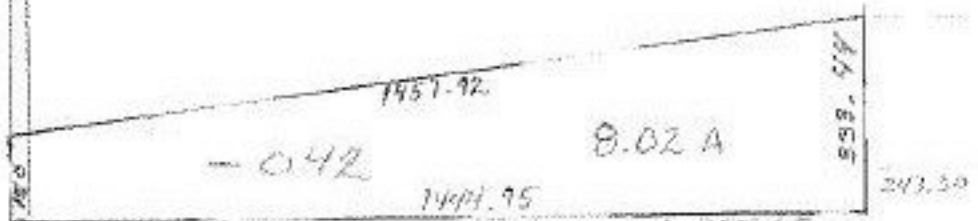
24

1474.25

1510.75

~~007~~ - 043
~~44.00 A~~ 55.98 A

1742
 498.20
 498.54



-017
 14.26 A

1288.47

CAPEL

557.76