

#11972

3.21A

#11972

APPROVED  
LORAIN CO.  
MAP DEPT.

DATE 8-24-78

PAGE 6-124

BY T. McRair

VOID  
AFTER

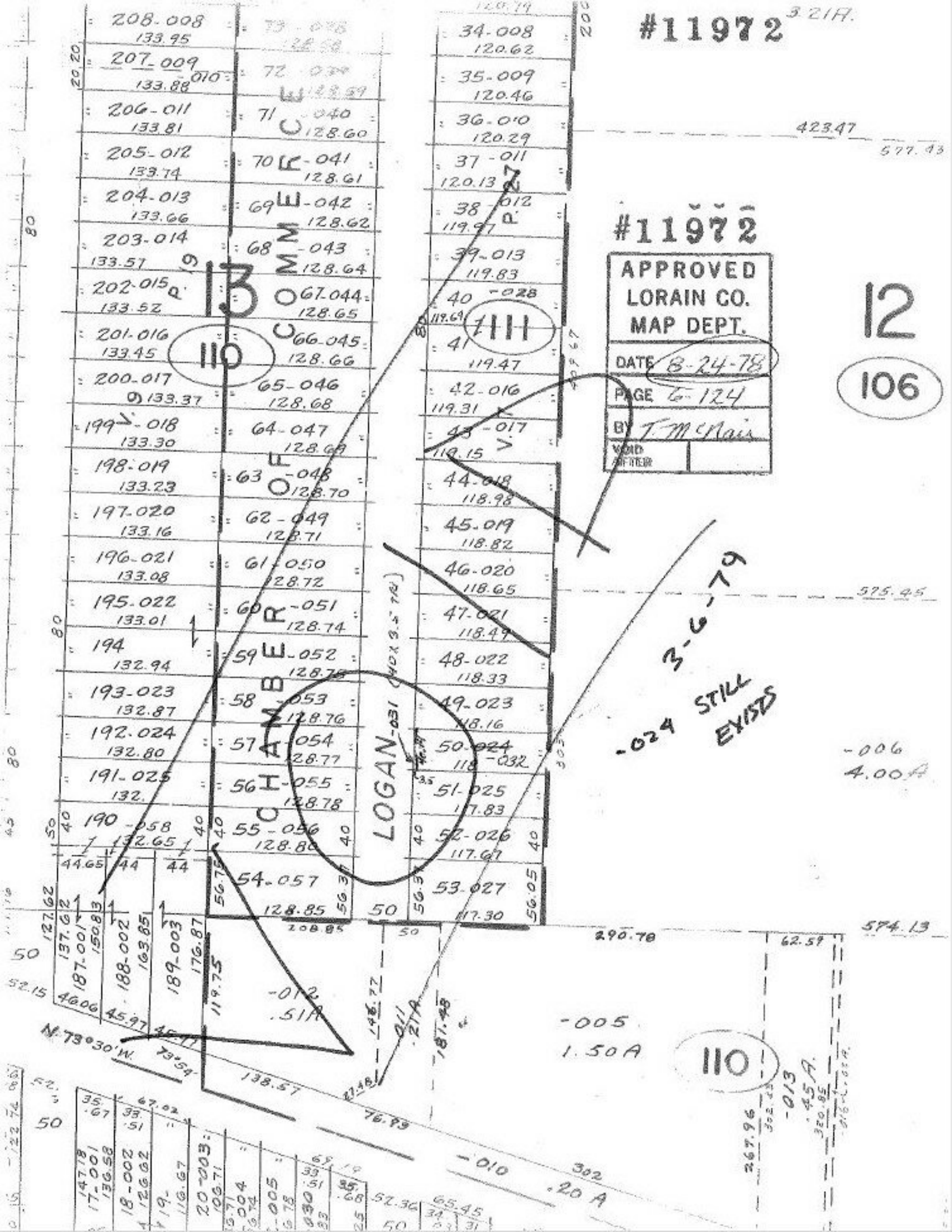
12

106

LOGAN-031 (40x3.5 70)

-024 STILL EXISTS  
3-6-79

110



423.47

577.43

575.45

-006  
4.00A

574.13

-005  
1.50A

-013

45A

320.85

016-0.02A

267.96

302.43

302

-010  
20A

52.30

65.45

34

31

50

25

85

68

51

33

51

67.19

57.30

50

50

50

52.15

50

147.18

17.001

136.58

18-002

4.126.62

19-

116.67

20-003

106.71

13.71

004

6.74

005

6.78

030

51

23

25

67.19

50

50

50

50

50

50

50

50

50

50

50

50

N-73°30'W  
73°54'

188-002  
163.85

189-003  
176.87

190-058  
132.65

191-025  
132

192-024  
132.80

193-023  
132.87

194  
132.94

195-022  
133.01

196-021  
133.08

197-020  
133.16

198-019  
133.23

199-018  
133.30

200-017  
133.37

201-016  
133.45

110

111

80

80

50

50

80

50

40

40

40

40

9

9

9

9

9

9

9

9

9

9

9

9

9

9

9

9

9

9

9

9

9

9

9

9

9

9

9

9

9

9

9

9

9

9

9

9

9

9

9

9

9

9

9

9

9

9

9

9

9

9

9

9

9

9

9

9

9

9

9

9

9

9

9

9

9

9

9

9

9

9

9

9

9

9

9

9

9

9

9

9

9

9

9

9

9

9

9

9

9

9

9

9

9

9

9

9

9

9

9

9

9

9

9

9

9

9

9

9

9

9

9

9

9

9

9

9

9

9

9

9

9

9

9

9

9

9

9

9

9

9

9

9

9

9

9

9

9

9

9

9

9

9

9

9

9

9

9

9

9

9

9

9

9

9

9

9

9

9

9

9

9

9

9

9

9

9

9

9

9

9

9

9

9

9

9

9

9

9

9

9

9

9

9

9

9

9

9

9

9

9

9

9

9

9

9

9

9

9

9

9

9

9

9

9

9

9

9

9

9

9

9

9

9

9

9

9

9

9

9

9

9

9

9

9

9

9

9

9

9

9

9

9

9

9

9

9

9