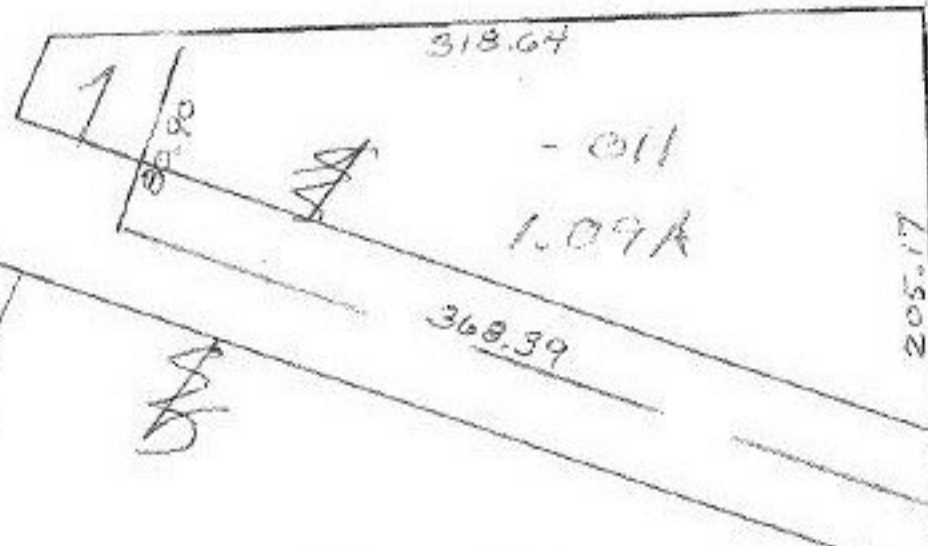


11951

SEE 16-00-045-B  
RICHFIELD

RD. 60?

B. B. (500)  
RD. 60.48 A  
Pt. 16-00-041-500-001

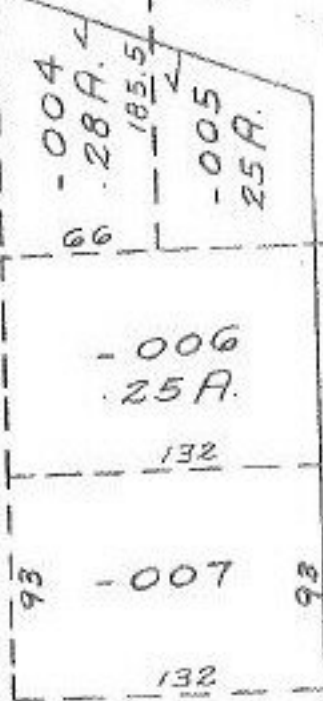


#11951

APPROVED LORAIN CO. MAP DEPT.
DATE 8-21-78
PAGE 16-00-056-A&B
BY T. McNamee
VOID AFTER

MAR 12 1979

Pt. - 012  
N. 62.39



RD. 60

~~003~~  
~~3-48A~~

\* CHANGE

Pgs. 16-00-056-A&B

350

new