

71...0

EAST

#11921

APPROVED
LORAIN CO.
MAP DEPT.

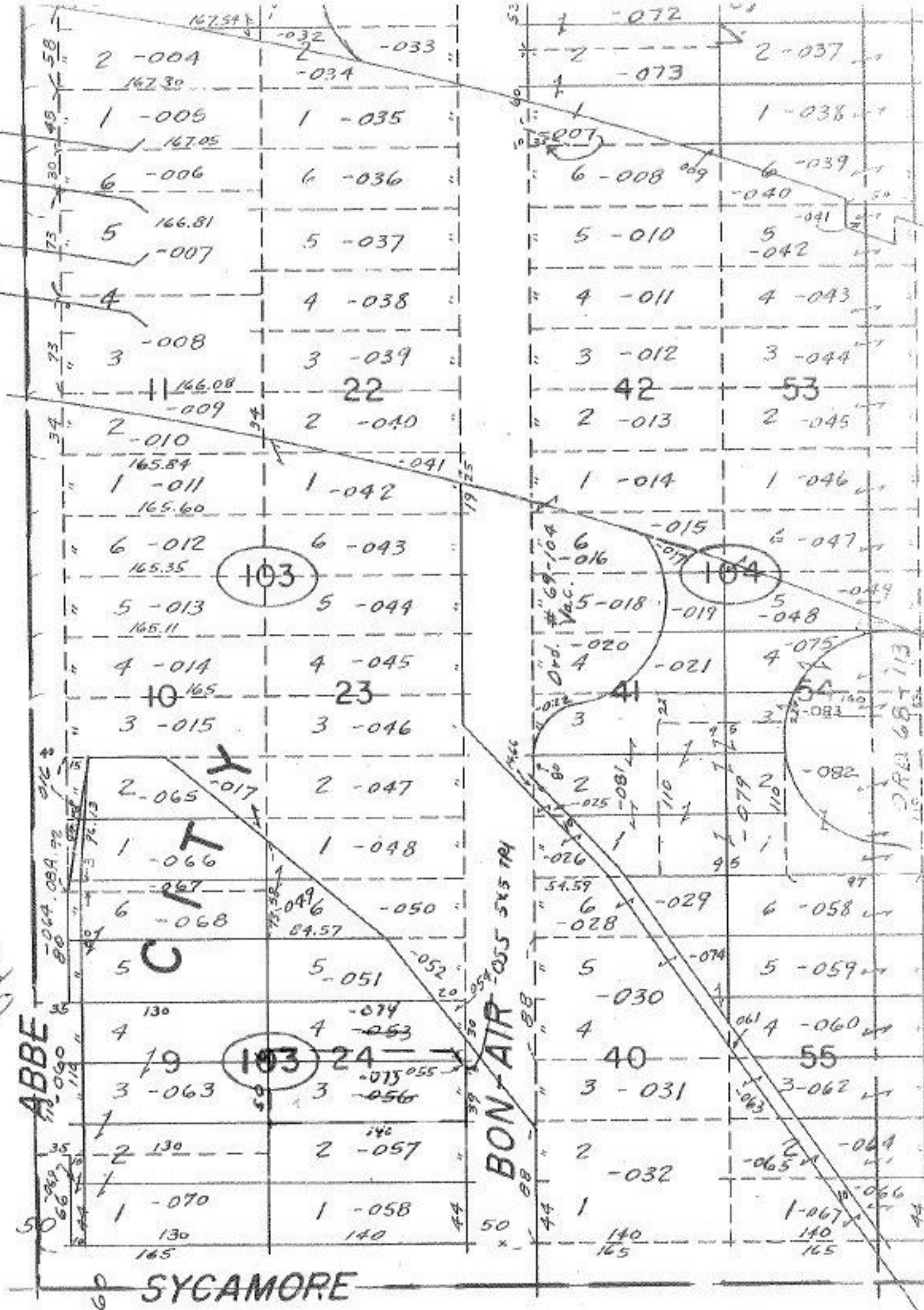
E 8-4-78

PAGE 6-71

BY T. M. Han

VOID AFTER

MAY 7 1979

-074 FRONT. 14.00
DEPTH 140.00
To CORRECT #11682 FRONT & DEPTH

BYPASS